

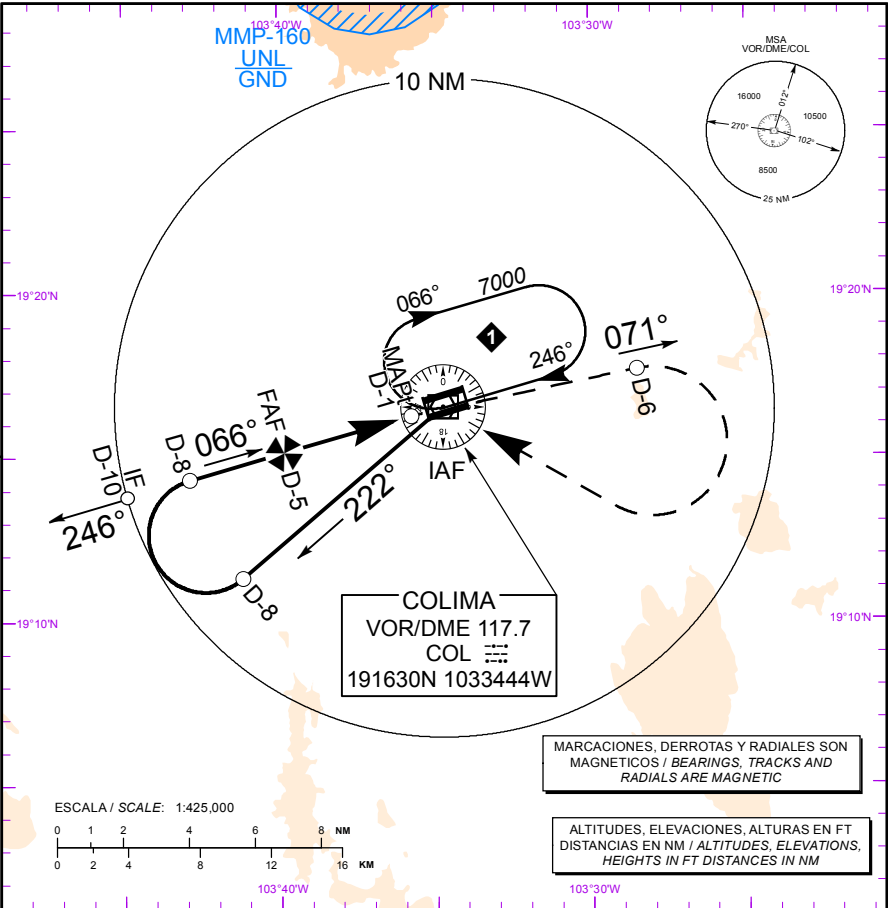
TWR118.9

APP118.7

ELEV AD 2467 FT  
VAR 8° E

**COLIMA**  
AEROPUERTO NACIONAL  
NATIONAL AIRPORT  
**VOR/DME RWY 07**

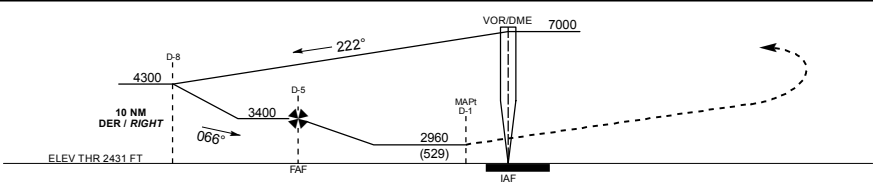
TA: 18500 FT



**APROXIMACION FRUSTRADA / MISSED APPROACH**

ASCIENDA EN **RADIAL 071°** HASTA **D-6**, EFECTUE VIRAJE DE GOTA A LA **DERECHA** DENTRO DE **8 NM** HACIA EL **VOR/DME/COL** HASTA LA ALTITUD MINIMA DE ESPERA.

CLIMB VIA **COL VOR R-071°** TO **D-6 COL**, THEN TURN **RIGHT** WITHIN **8 NM** TO **VOR/DME/COL** AT THE MINIMUM HOLDING ALTITUDE.



| CAT                | A                       | B                           | C                           | D              |
|--------------------|-------------------------|-----------------------------|-----------------------------|----------------|
| DIRECT MDA (MDH)   | 2960 (529)              | 1 (1600 M)                  | 1 1/2 (2400 M)              | 1 3/4 (2800 M) |
| CIRCLING MDA (MDH) | 3060 (593) - 1 (1600 M) | 3120 (653) - 1 3/4 (2800 M) | 3260 (793) - 2 1/2 (4000 M) |                |