

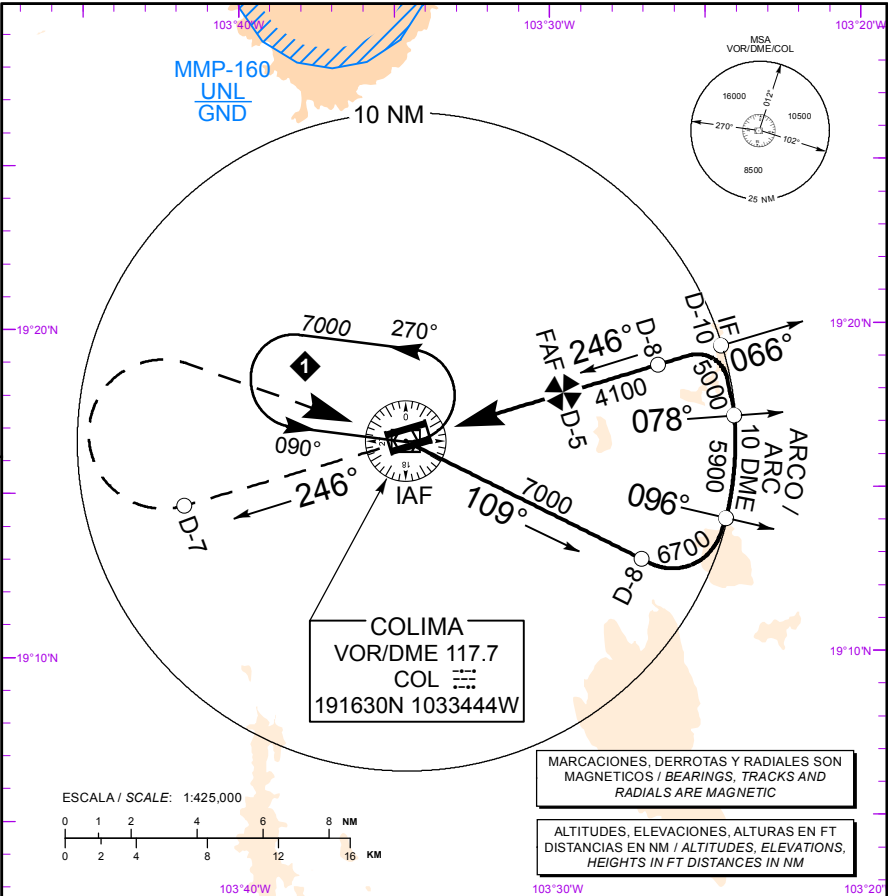
TWR 118.9  
APP 118.7

ELEV AD 2467 FT  
VAR 8° E

**COLIMA**  
AEROPUERTO NACIONAL  
NATIONAL AIRPORT

TA: 18500 FT

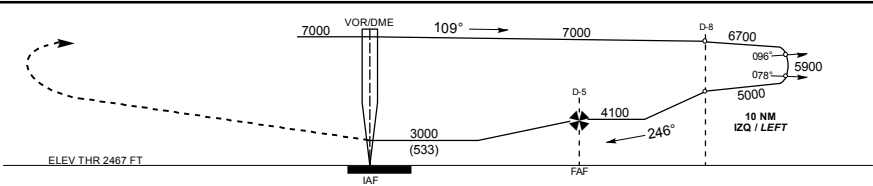
**VOR/DME RWY 25**



**APROXIMACION FRUSTRADA / MISSED APPROACH**

ASCIENDA EN RADIAL 246° HASTA D-7, EFECTUE VIRAJE DE GOTA A LA DERECHA DENTRO DE 10 NM HACIA EL VOR/DME/COL HASTA LA ALTITUD MINIMA DE ESPERA.

CLIMB VIA COL VOR R-246° TO D-7 COL, THEN TURN RIGHT WITHIN 10 NM TO VOR/DME/COL AT THE MINIMUM HOLDING ALTITUDE.



CAT	A	B	C	D
DIRECT MDA (MDH) 3000 (533)	1 (1600 M)		1 1/2 (2400 M)	1 3/4 (2800 M)
CIRCLING MDA (MDH)	3060 (593) - 1 (1600 M)		3120 (653) - 1 3/4 (2800 M)	3260 (793) - 2 1/2 (4000 M)

CAMBIOS / CHANGES: FREQ APP.