

COZUMEL / COZUMEL INTL (MMCZ)

VOR/DME 1 RWY 30

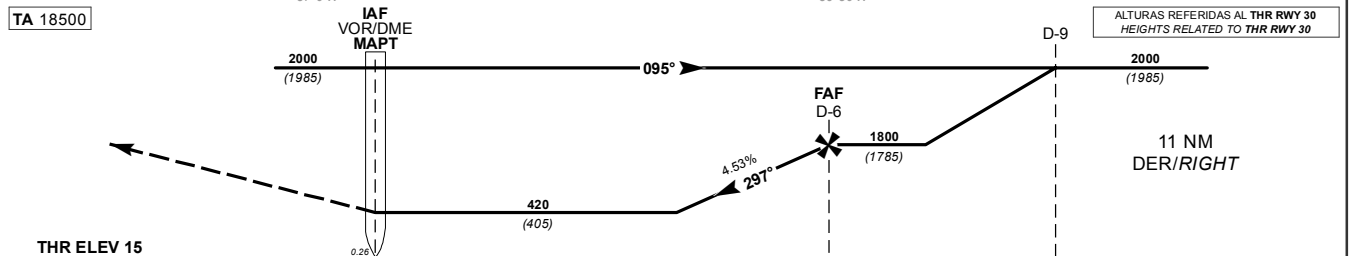
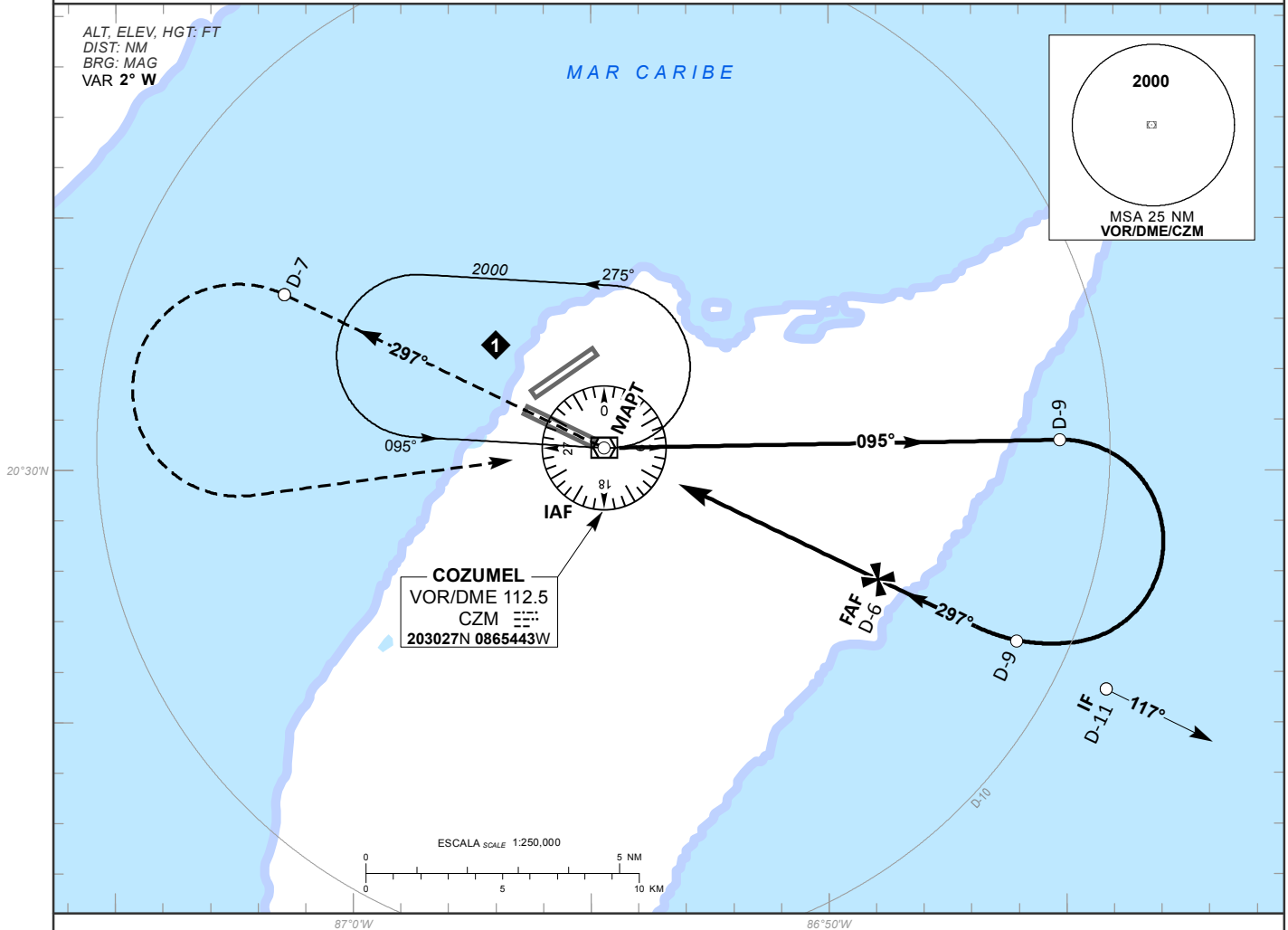
INSTRUMENT APPROACH CHART (IAC)

TWR	MMUN APP	MMUN ARR	MMUN DEP NORTE	MMUN DEP SUR	MMCZ ATIS	AUX (MMUN TWR/APP)	AD ELEV 15 FT
118.0	124.7	123.2	124.2	123.5	127.8	120.4	

APCH FRUSTRADA: ASCIENDA EN RADIAL **297°** HASTA **D-7**, EFECTUE VIRAJE DE GOTAA LA **IZQUIERDA** DENTRO DE **10 NM** HACIA EL **VOR/DME/CZM**, HASTA LA ALTITUD MINIMA DE ESPERA.

MISSED APCH: CLIMB VIA CZM VOR R-297° TO D-7, THEN TURN LEFT WITHIN 10 NM TO VOR/DME/CZM AT MINIMUM HOLDING ALTITUDE.

RMK:



GRADIENTE DE DESCENSO RATE OF DESCENT	FAP-MAPT 6				4.53%				ALTITUD MINIMA SEGUN DISTANCIA MINIMUM ALTITUDE ACCORDING TO DISTANCE	NM	6	5	4	3	2
	GS (KTS)	80	100	120	140	160	180	200		FT	1800	1525	1250	975	700
	FT / NM	368	460	552	644	736	828	919			(1785)	(1510)	(1235)	(960)	(685)
	MIN : SEC	4:43	3:46	3:09	2:42	2:22	2:06	1:53							

CAT	DIRECTO <small>STRAIGHT-IN</small>	CIRCULANDO <small>CIRCLING</small>
	MDA (MDH) 420 (405)	MDA (MDH)
A	1 (1600 M)	540 (525) - 1 (1600 M)
B		
C		540 (525) - 1 1/2 (2400 M)
D	1 1/4 (2000 M)	580 (565) - 2 (3200 M)

CAMBIOS: SIMBOLOGIA.