

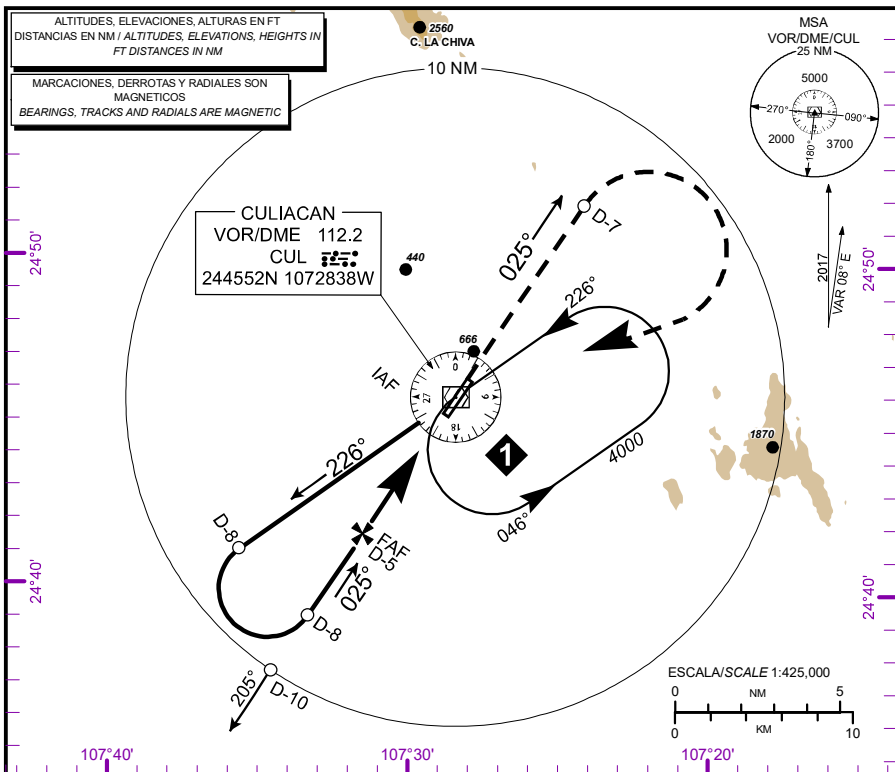
CARTA DE APROXIMACION
POR INSTRUMENTOS
INSTRUMENT
APPROACH CHART
(IAC)

ATIS 127.8
TWR 118.5
APP 119.75
ACC/MMZT SEC 3 128.0
ACC/MMZT SEC 4 124.4
ACC/MMZT SEC 5 124.2

ELEV AD 105 FT
VAR 8° E

ALTITUD DE TRANSICION
TRANSITION ALTITUDE
16500

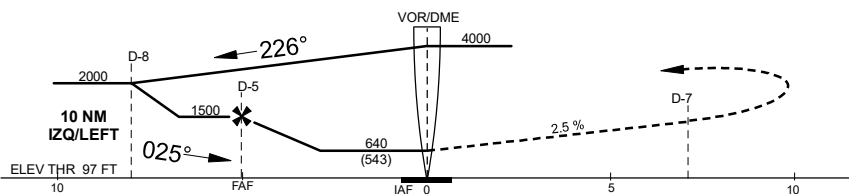
CULIACAN
AEROPUERTO INTERNACIONAL
INTERNATIONAL AIRPORT
VOR/DME 1 RWY 02



APROXIMACION FRUSTRADA / MISSED APPROACH

ASCIENDA EN RADIAL 025° HASTA D-7, EFECTUE VIRAJE DE GOTA A LA DERECHA DENTRO DE 10 NM HACIA EL VOR/DME/CUL HASTA LA ALTITUD MINIMA DE ESPERA.

CLIMB VIA CUL VOR R-025° TO D-7, THEN TURN RIGHT WITHIN 10 NM TO VOR/DME/CUL AT THE MINIMUM HOLDING ALTITUDE.



| CAT | A | B | C | D |
|----------------------------|-----------------------|---------------------------|-----------------------|-----------------------|
| DIRECT MDA (MDH) 640 (543) | 1 (1600 M) | 1 1/2 (2400 M) | 1 3/4 (2800 M) | 1 3/4 (2800 M) |
| CIRCLING MDA (MDH) | 740 (635) -1 (1600 M) | 740 (635) -1 3/4 (2800 M) | 740 (635) -2 (3200 M) | 740 (635) -2 (3200 M) |