

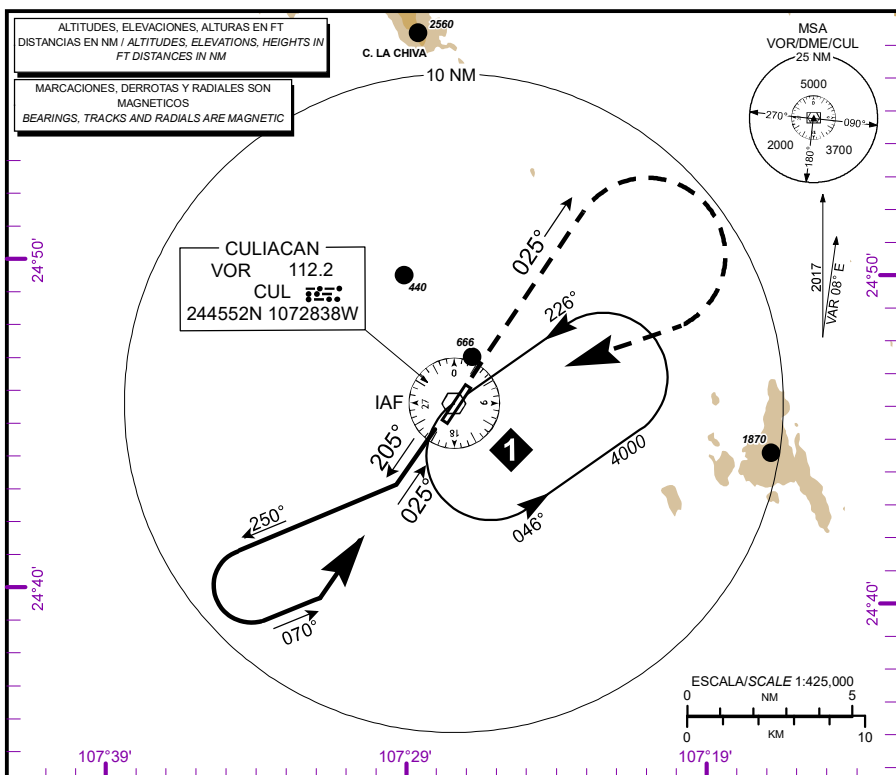
CARTA DE APROXIMACION
POR INSTRUMENTOS
INSTRUMENT
APPROACH CHART
(IAC)

ATIS 127.8
TWR 118.5
APP 119.75
ACC/MMZT SEC 3 128.0
ACC/MMZT SEC 4 124.4
ACC/MMZT SEC 5 124.2

ELEV AD 105 FT
VAR 8° E

ALTITUD DE TRANSICION
TRANSITION ALTITUDE
16500

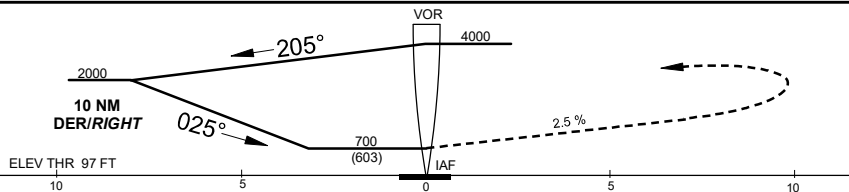
CULIACAN
AEROPUERTO INTERNACIONAL
INTERNATIONAL AIRPORT
VOR RWY 02



APROXIMACION FRUSTRADA / MISSED APPROACH

ASCIENDA EN RADIAL 025°, EFECTUE VIRAJE DE GOTA A LA DERECHA DENTRO DE 10 NM HACIA EL VOR/CUL HASTA LA ALTITUD MINIMA DE ESPERA.

CLIMB VIA CUL VOR R-025°, THEN TURN RIGHT WITHIN 10 NM TO CUL VOR AT THE MINIMUM HOLDING ALTITUDE.



| CAT | A | B | C | D |
|----------------------------|-----------------------|---|---------------------------|-----------------------|
| DIRECT MDA (MDH) 700 (603) | 1 (1600 M) | | 1 3/4 (2800 M) | 2 (3200 M) |
| CIRCLING MDA (MDH) | 740 (635) -1 (1600 M) | | 740 (635) -1 3/4 (2800 M) | 740 (635) -2 (3200 M) |

APROXIMACION FRUSTRADA / MISSED APPROACH

DISTANCIA MAXIMA DE ALEJAMIENTO 7NM DESDE EL MAPt
MAXIMUM DISTANCE TO TURN 7 NM FROM MAPt

| VEL GS (KTS) | 80 | 100 | 120 | 140 | 160 | 180 | 200 |
|--------------|------|------|------|------|------|------|------|
| MIN:SEC | 5:15 | 4:12 | 3:30 | 3:00 | 2:37 | 2:20 | 2:06 |

CAMBIO / CHANGES: ELEV AD THR, HAA, MINIMOS