

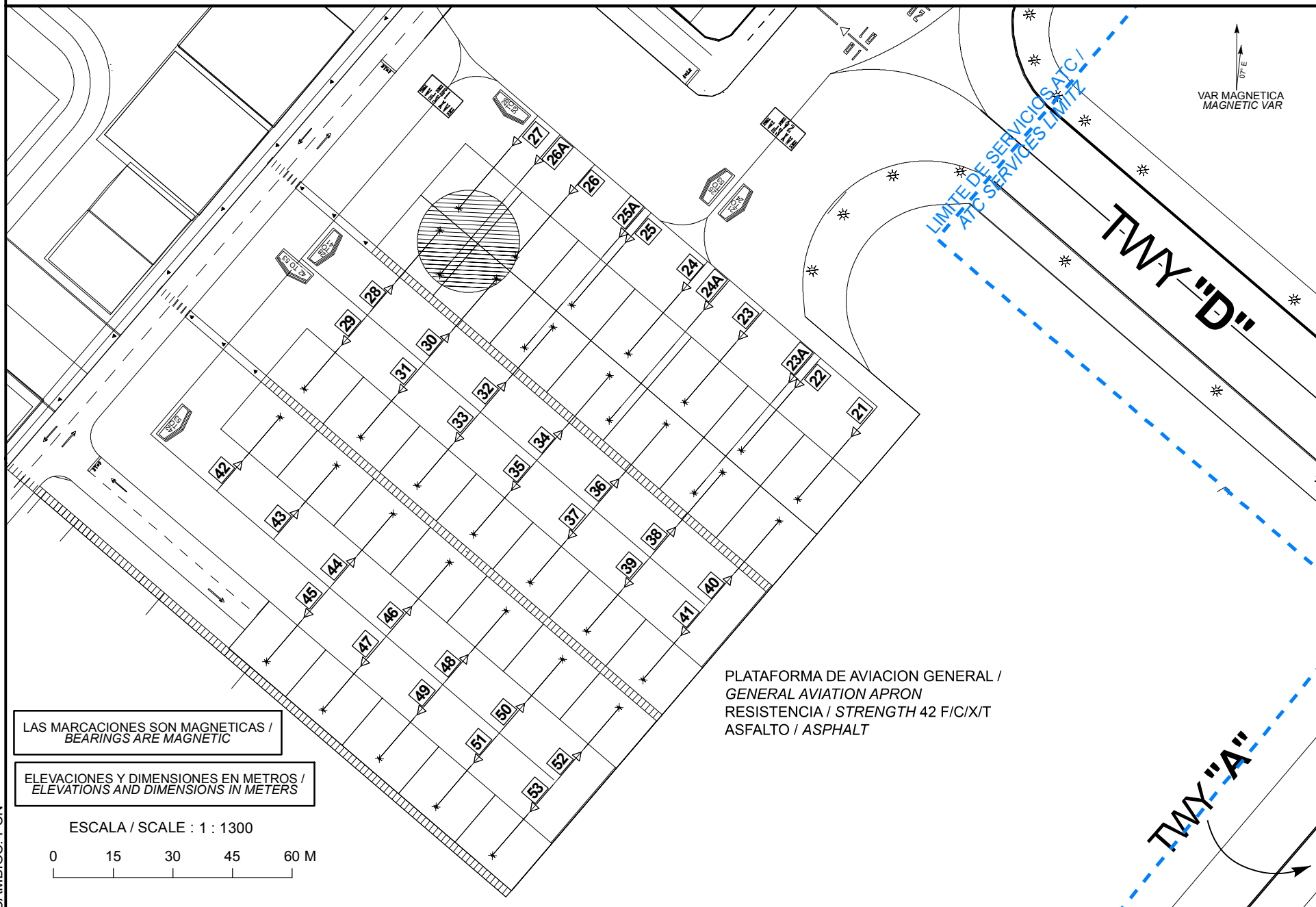
PLANO DE ESTACIONAMIENTO Y ATRAQUE DE AERONAVES/
AIRCRAFT PARKING/DOCKING CHART

ELEV AD 1860.5 M

TWR / APP
ATIS

118.1
132.1

DURANGO
AEROPUERTO INTL /
INTL AIRPORT



CAMBIO: PCN

**COORDENADAS INS DE PUESTOS DE ESTACIONAMIENTO DE AERONAVES AVIACION GENERAL /
COORDINATES INS, FOR AIRCRAFT STANDS, GENERAL AVIATION**

POSICION / POSITION	LAT (N)	LONG (W)
21	24° 07' 26.79"	104° 32' 00.14"
22	24° 07' 27.15"	104° 32' 00.65"
23A	24° 07' 26.81"	104° 32' 01.03"
23	24° 07' 27.52"	104° 32' 01.15"
24	24° 07' 27.88"	104° 32' 01.65"
24A	24° 07' 27.35"	104° 32' 01.79"
25	24° 07' 28.24"	104° 32' 02.15"
25A	24° 07' 27.89"	104° 32' 02.54"
26	24° 07' 28.60"	104° 32' 02.65"
26A	24° 07' 28.43"	104° 32' 03.29"
27	24° 07' 28.96"	104° 32' 03.15"
28	24° 07' 28.79"	104° 32' 03.30"
29	24° 07' 27.46"	104° 32' 04.41"
30	24° 07' 28.42"	104° 32' 02.80"
31	24° 07' 27.13"	104° 32' 03.91"
32	24° 07' 28.06"	104° 32' 02.30"
33	24° 07' 26.77"	104° 32' 03.41"
34	24° 07' 27.70"	104° 32' 01.80"
35	24° 07' 26.41"	104° 32' 02.91"
36	24° 07' 27.34"	104° 32' 01.30"
37	24° 07' 26.05"	104° 32' 02.41"

POSICION / POSITION	LAT (N)	LONG (W)
38	24° 07' 26.98"	104° 32' 00.80"
39	24° 07' 25.69"	104° 32' 01.90"
40	24° 07' 26.62"	104° 32' 00.30"
41	24° 07' 25.32"	104° 32' 01.40"
42	24° 07' 27.27"	104° 32' 04.61"
43	24° 07' 26.91"	104° 32' 04.10"
44	24° 07' 26.54"	104° 32' 03.60"
45	24° 07' 25.34"	104° 32' 04.63"
46	24° 07' 26.18"	104° 32' 03.10"
47	24° 07' 24.98"	104° 32' 04.13"
48	24° 07' 25.82"	104° 32' 02.60"
49	24° 07' 24.62"	104° 32' 03.63"
50	24° 07' 25.46"	104° 32' 02.10"
51	24° 07' 24.25"	104° 32' 03.13"
52	24° 07' 25.10"	104° 32' 01.60"
53	24° 07' 23.89"	104° 32' 02.63"