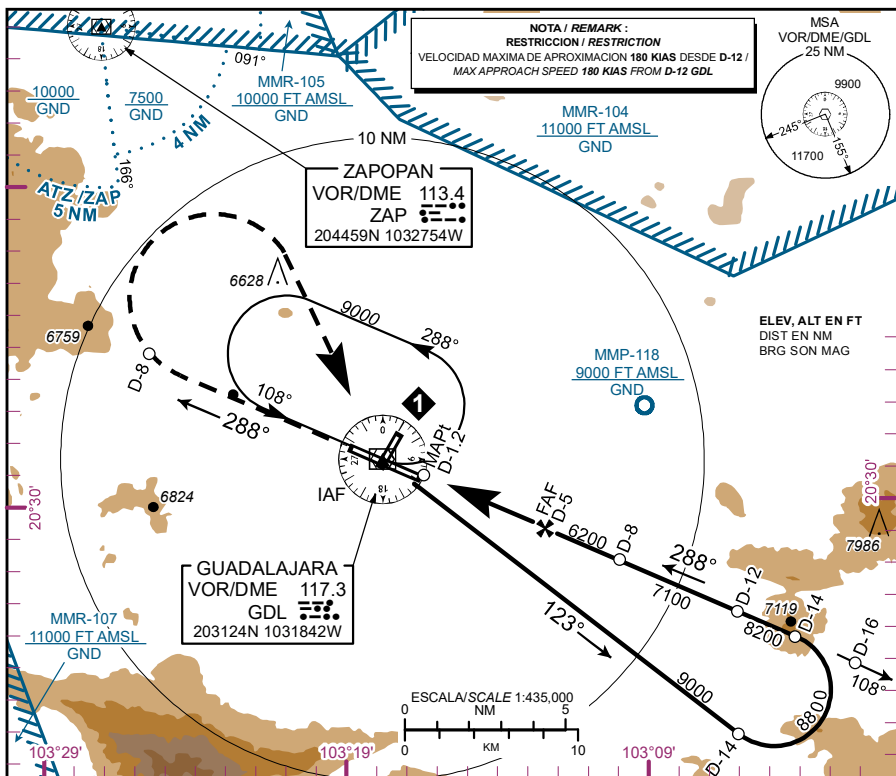
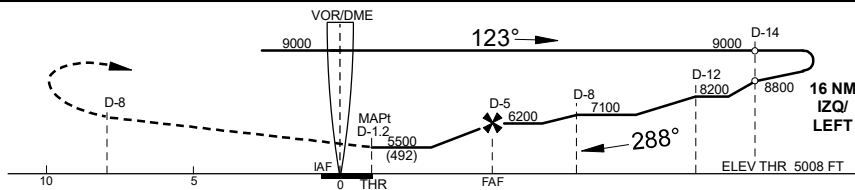


3 FT  
**GUADALAJARA**  
AEROPUERTO INTL / INTL AIRPORT  
MIGUEL HIDALGO Y COSTILLA  
**VOR/DME RWY 29**

ELEV, ALT EN FT  
DIST EN NM  
BRG SON MAG



CLIMB VIA GDL VOR R-288° TO D-8, THEN TURN RIGHT WITHIN 10 NM TO VOR/DME/GDL AT MINIMUM HOLDING ALTITUDE



CAT	A	B	C	D
DIRECT MDA (MDH) 5500 (492)	1 (1600 M)		1 1/4 (2000 M)	1 1/2 (2400 M)
CIRCLING MDA (MDH)	5560 (547) -1 (1600 M)		5600 (587) -1 1/2 (2400 M)	5900 (887) -3 (4800 M)

FAF-MAPt	VEL GS (KTS)	80	100	120	140	160	180	200
3.8 NM	FT/MIN	394	493	592	690	789	887	986
4.87 %	MIN:SEC	2:51	2:17	1:54	1:38	1:26	1:16	1:08

ALTITUD MINIMA SEGUN  
DISTANCIA DME/IGDL /  
MINIMUM ALTITUDE ACCORDING  
TO DISTANCE DME/IGDL

NM	5	4	3
FT	6200 (1190)	5904 (894)	5608 (598)

CAMBIOS: DESIGNADOR RWY: ELEV THR