

PLANO DE ESTACIONAMIENTO Y ATRAQUE DE AERONAVES/
AIRCRAFT PARKING/DOCKING CHART

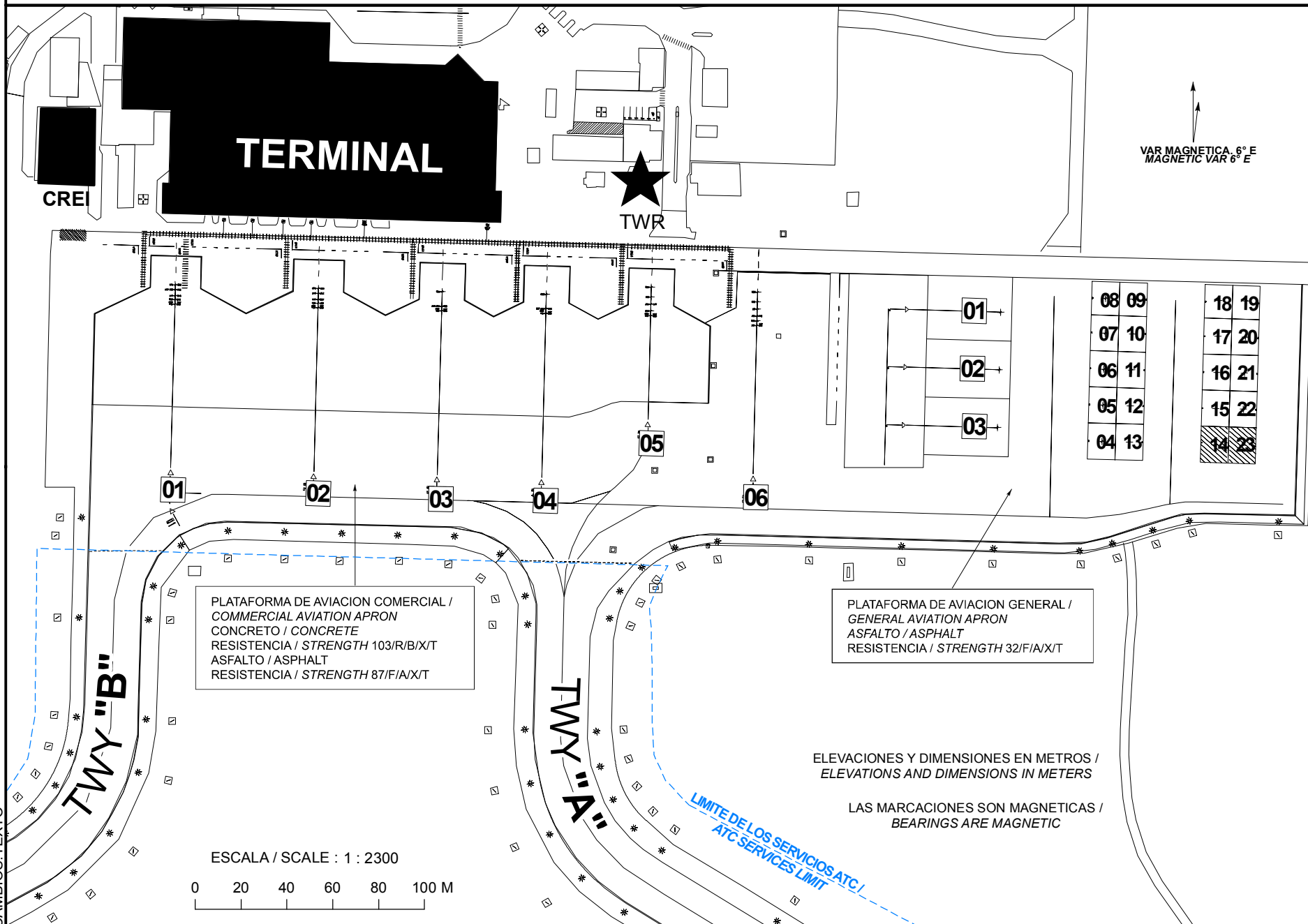
ELEV AD 8 M

IXTAPA-ZIHUATANEJO

AEROPUERTO INTL
INTL AIRPORT

TWR
APP

118.3
121.0



CAMBIO: TEXTO

15-JUL-2021 AMDT AIRAC 07/21

SCT-AFAC-SENEAM

2-7 MMZH PDC

**COORDENADAS INS, DE PUESTOS DE ESTACIONAMIENTO
DE AERONAVES AVIACION COMERCIAL /
COORDINATES INS, FOR AIRCRAFT STANDS, COMMERCIAL
AVIATION APRON**

POSICION/ POSITION	LAT (N)	LONG (W)
1	17° 36' 20.27"	101° 27' 51.73"
	17° 36' 20.21"	101° 27' 51.73"
	17° 36' 20.12"	101° 27' 51.74"
	17° 36' 20.07"	101° 27' 51.74"
	17° 36' 20.01"	101° 27' 51.74"
2	17° 36' 20.22"	101° 27' 49.72"
	17° 36' 20.15"	101° 27' 49.72"
	17° 36' 20.07"	101° 27' 49.72"
	17° 36' 20.02"	101° 27' 49.72"
	17° 36' 19.96"	101° 27' 49.72"
3	17° 36' 20.18"	101° 27' 47.97"
	17° 36' 19.98"	101° 27' 47.97"
	17° 36' 19.91"	101° 27' 47.98"
4	17° 36' 20.14"	101° 27' 46.49"
	17° 36' 19.94"	101° 27' 46.50"
	17° 36' 19.88"	101° 27' 46.50"
5	17° 36' 20.23"	101° 27' 45.02"
	17° 36' 20.10"	101° 27' 45.02"
	17° 36' 20.00"	101° 27' 45.02"
	17° 36' 19.91"	101° 27' 45.02"
	17° 36' 19.85"	101° 27' 45.03"
6	17° 36' 20.16"	101° 27' 43.52"
	17° 36' 20.03"	101° 27' 43.52"
	17° 36' 19.93"	101° 27' 43.52"
	17° 36' 19.84"	101° 27' 43.52"
	17° 36' 19.78"	101° 27' 43.53"
	17° 36' 19.71"	101° 27' 43.53"

**COORDENADAS INS, DE PUESTOS DE ESTACIONAMIENTO
DE AERONAVES AVIACION GENERAL /
COORDINATES INS, FOR AIRCRAFT STANDS, GENERAL
AVIATION APRON**

POSICION/ POSITION	LAT (N)	LONG (W)
1	17° 36' 19.89"	101° 27' 40.08"
2	17° 36' 19.11"	101° 27' 40.10"
3	17° 36' 18.33"	101° 27' 40.13"
4	17° 36' 18.14"	101° 27' 38.66"
5	17° 36' 18.63"	101° 27' 38.65"
6	17° 36' 19.11"	101° 27' 38.63"
7	17° 36' 19.60"	101° 27' 38.62"
8	17° 36' 20.07"	101° 27' 38.60"
9	17° 36' 20.06"	101° 27' 38.21"
10	17° 36' 19.59"	101° 27' 38.23"
11	17° 36' 19.10"	101° 27' 38.24"
12	17° 36' 18.62"	101° 27' 38.26"
13	17° 36' 18.13"	101° 27' 38.27"
14	17° 36' 18.09"	101° 27' 37.07"
15	17° 36' 18.58"	101° 27' 37.05"
16	17° 36' 19.07"	101° 27' 37.04"
17	17° 36' 19.56"	101° 27' 37.02"
18	17° 36' 20.03"	101° 27' 37.01"
19	17° 36' 20.02"	101° 27' 36.62"
20	17° 36' 19.55"	101° 27' 36.63"
21	17° 36' 19.06"	101° 27' 36.65"
22	17° 36' 18.57"	101° 27' 36.66"
23	17° 36' 18.08"	101° 27' 36.68"