

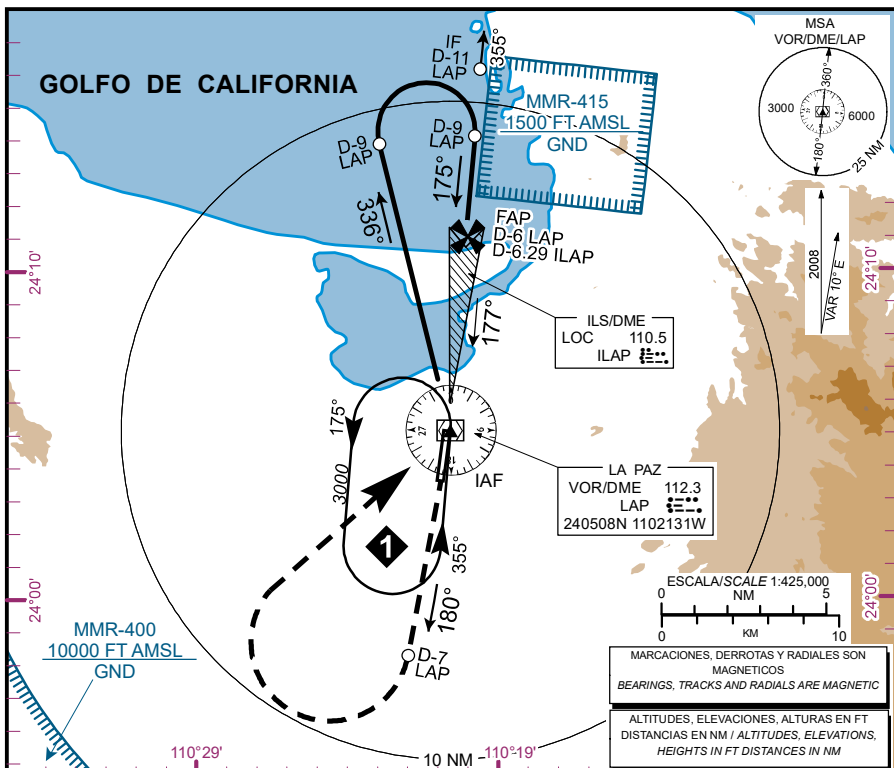
CARTA DE APROXIMACION  
POR INSTRUMENTOS  
INSTRUMENT  
APPROACH CHART  
(IAC)

ATIS 127.9  
TWR 118.1  
APP 120.6  
ACC / MMZT SECT. 3 128.0

ELEV AD 69 FT  
VAR 10° E

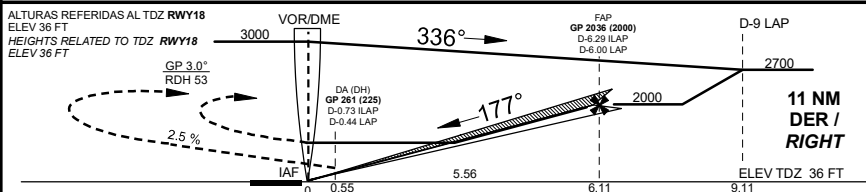
ALTITUD DE TRANSICION  
TRANSITION ALTITUDE  
18500

**LA PAZ**  
AEROPUERTO INTL / INTL AIRPORT  
GRAL. MANUEL MARQUEZ DE LEON  
**ILS/DME 1 RWY 18**  
**LOC RWY 18**



#### APROXIMACION FRUSTRADA / MISSED APPROACH

ASCIENDA EN RADIAL 180° HASTA D-7, EFECTUE VIRAJE DE GOTA A LA DERECHA DENTRO DE 10 NM HACIA EL VOR/DME/LAP HASTA LA ALTITUD MINIMA DE ESPERA.  
CLIMB VIA LAP VOR R-180° TO D-7, THEN TURN RIGHT WITHIN 10 NM TO VOR/DME/LAP AT THE MINIMUM HOLDING ALTITUDE.



	A	B	C	D
CAT I COMPLETO / FULL	DA (DH) 261 (225) - 3/4 (1200 M)			
LOC COMPLETO / FULL	MDA (MDH) 540 (504) - 1 (1600 M)		540 (504) - 1 1/2 (2400 M)	
CIRCLING	MDA (MDH) 680 (611) - 1 (1600 M)		680 (611) - 1 3/4 (2800 M) 680 (611) - 2 (3200 M)	

#### GRADIENTE DE DESCENSO / RATE OF DESCENT

FAP-THR 6.11 NM 5.24% (3.0°)	VEL GS (KTS)	80	100	120	140	160	180	200
	FT/MIN	425	531	637	743	849	955	1061
	MIN:SEC	4:35	3:40	3:03	2:37	2:17	2:02	1:50

ALTITUD MINIMA SEGUN  
DISTANCIA DME/ILAP  
MINIMUM ALTITUDE ACCORDING  
TO DISTANCE DME/ILAP

NM	6.29	5	4	3	2
FT	2000 (1964)	1590 (1554)	1272 (1236)	954 (918)	636 (600)