

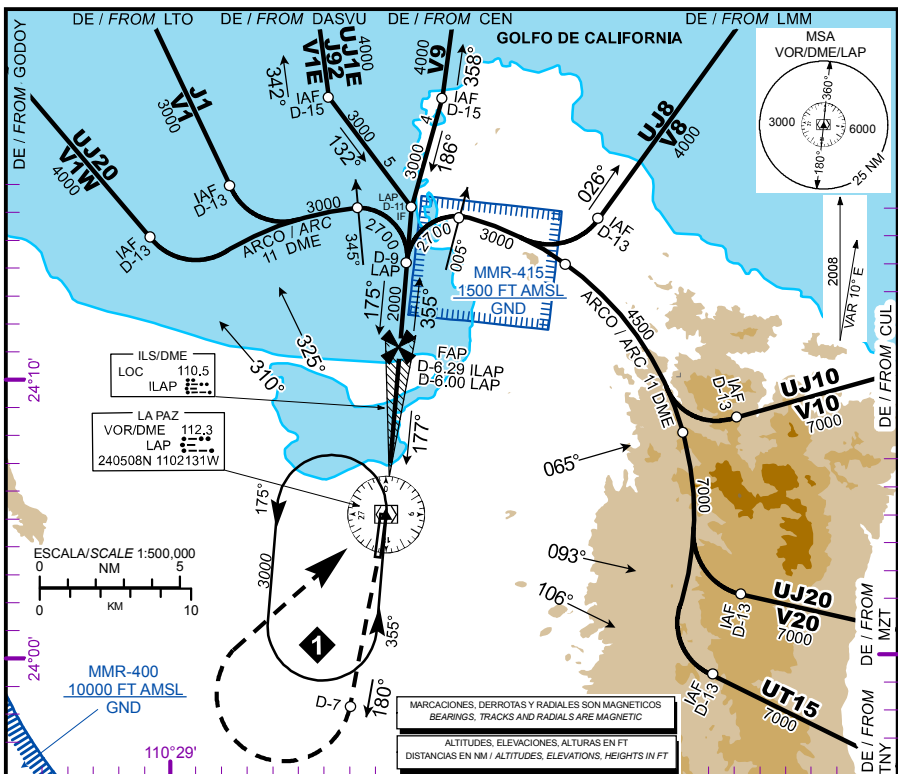
CARTA DE APROXIMACION
POR INSTRUMENTOS
INSTRUMENT
APPROACH CHART
(IAC)

ATIS 127.9
TWR 118.1
APP 120.6
ACC / MMZT SECT. 3 128.0

ELEV AD 69 FT
VAR 10° E

ALTITUD DE TRANSICION
TRANSITION ALTITUDE
18500

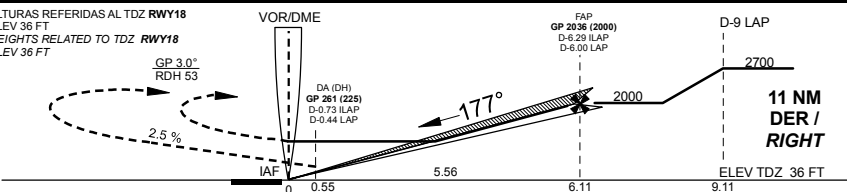
LA PAZ
AEROPUERTO INTL / INTL AIRPORT
GRAL. MANUEL MARQUEZ DE LEON
ILS/DME 2 RWY 18
LOC RWY 18



APROXIMACION FRUSTRADA / MISSED APPROACH

ASCIENDA EN **RADIAL 180°** HASTA **D-7**, EFECTUE VIRAJE DE GOTA A LA **DERECHA** DENTRO DE **10 NM** HACIA EL **VOR/DME/LAP** HASTA LA ALTITUD MINIMA DE ESPERA.
CLIMB VIA **LAP VOR R-180°** TO **D-7**, THEN TURN **RIGHT** WITHIN **10 NM** TO **VOR/DME/LAP** AT THE MINIMUM HOLDING ALTITUDE.

ALTURAS REFERIDAS AL TDZ RWY18
ELEV 36 FT
HEIGHTS RELATED TO TDZ RWY18
ELEV 36 FT



	A	B	C	D				
CAT I COMPLETO / FULL	DA (DH) 261 (225) - 3/4 (1200 M)							
LOC COMPLETO / FULL	MDA (MDH) 540 (504) - 1 (1600 M)		540 (504) - 1 1/2 (2400 M)					
CIRCLING	MDA (MDH) 680 (611) -1 (1600 M)		680 (611) -1 3/4 (2800 M)	680 (611) -2 (3200 M)				
GRADIENTE DE DESCENSO / RATE OF DESCENT								
FAP-THR 6.11 NM 5.24% (3.0°)	VEL GS (KTS)	80	100	120	140	160	180	200
	FT/MIN	425	531	637	743	849	955	1061
	MIN:SEC	4:35	3:40	3:03	2:37	2:17	2:02	1:50
ALTITUD MINIMA SEGUN DISTANCIA DME/ILAP MINIMUM ALTITUDE ACCORDING TO DISTANCE DME/ILAP								
	NM	6.29	5	4	3	2		
	FT	2000 (1964)	1590 (1554)	1272 (1236)	954 (918)	636 (600)		

02-ENE-2020 AMDT AIRAC 01/20

SCT-DGAC-SENEAM

MMPL-IAC-2