

CARTA DE APROXIMACION
POR INSTRUMENTOS
INSTRUMENT
APPROACH CHART
(IAC)

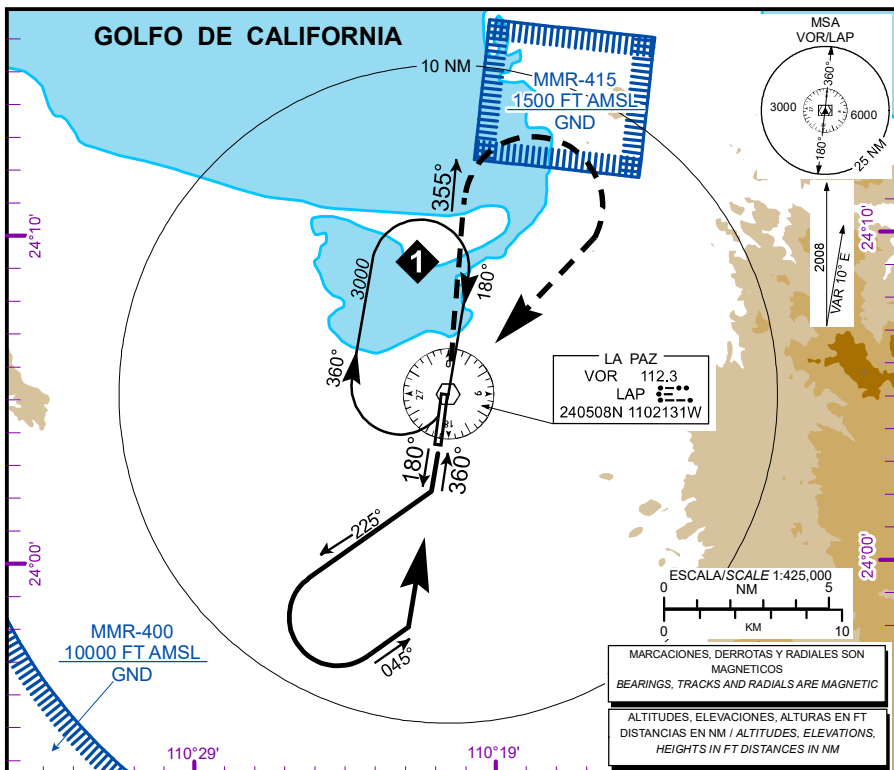
ATIS 127.9
TWR 118.1
APP 120.6
ACC / MMZT SECT. 3 128.0

ELEVAD 69 FT
VAR 10° E

LA PAZ
AEROPUERTO INTL / INTL AIRPORT
GRAL. MANUEL MARQUEZ
DE LEÓN

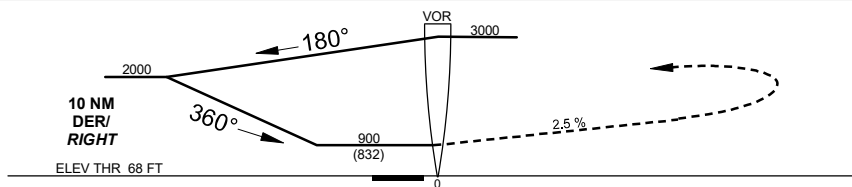
VOR RWY 36

ALTITUD DE TRANSICION
TRANSITION ALTITUDE
18500



APROXIMACION FRUSTRADA / MISSED APPROACH

ASCIENDA EN RADIAL 355° EFECTUE VIRAJE DE GOTA A LA DERECHA DENTRO DE 10 NM HACIA EL VOR/LAP HASTA LA ALTITUD MINIMA DE ESPERA.
CLIMB VIA LAP VOR R-355° THEN TURN RIGHT WITHIN 10 NM TO VOR/LAP AT THE MINIMUM HOLDING ALTITUDE.



CAT	A	B	C	D
DIRECT MDA (MDH) 900 (832)	1 (1600 M)	1 1/4 (2000 M)	2 1/2 (4000 M)	2 3/4 (4400 M)
CIRCLING MDA (MDH)	900 (831) -1 (1600 M)	900 (831) -1 1/4 (2000 M)	900 (831) -2 1/2 (4000 M)	900 (831) -2 3/4 (4400 M)

APROXIMACION FRUSTRADA / MISSED APPROACH

DISTANCIA MAXIMA DE ALEJAMIENTO 7 NM DESDE MAPt
MAXIMUM DISTANCE TO TURN 7 NM FROM MAPt

VEL GS (KTS)	80	100	120	140	160	180	200
MIN:SEC	5:15	4:12	3:30	3:00	2:38	2:20	2:06

CAMBIO / CHANGES: MSA

28-FEB-2019 AMDT AIRAC 03/19

SCT-DGAC-SENEAM

MMLP-IAC-8