

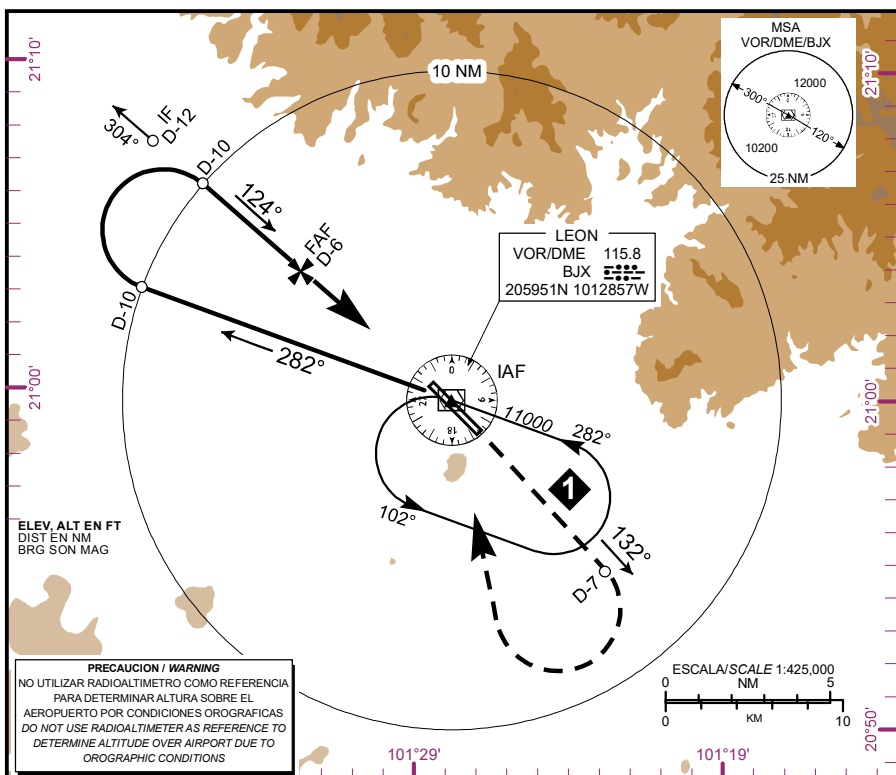
CARTA DE APROXIMACION
POR INSTRUMENTOS
INSTRUMENT
APPROACH CHART
(IAC)

TWR 118.35
APP 119.40
ATIS 128.4
MMAS APP 119.05

ELEV AD 5956 FT
VAR 6° E

LEON
AEROPUERTO INTL /INTL AIRPORT
GUANAJUATO
VOR/DME 1 RWY 13

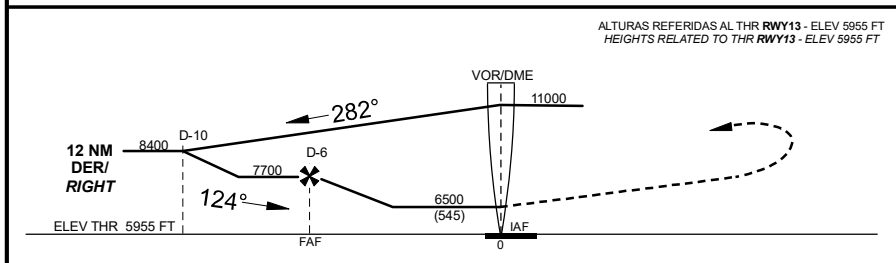
ALTITUD DE TRANSICION
TRANSITION ALTITUDE
18500



APROXIMACION FRUSTRADA / MISSED APPROACH

ASCIENDA EN **RADIAL 132°** HASTA **D-7**, EFECTUE VIRAJE DE GOTA A LA **DERECHA** DENTRO DE **10 NM** HACIA EL **VOR/DME/BJX** HASTA LA ALTITUD MINIMA DE ESPERA.

CLIMB VIA **BJX VOR R-132°** TO **D-7**, THEN **TURN RIGHT** WITHIN **10 NM** TO **VOR/DME/BJX** AT MINIMUM HOLDING ALTITUDE



CAT	A	B	C	D
DIRECT MDA (MDH) 6500 (545)	1 (1600 M)	1 1/2 (2400 M)	1 3/4 (2800 M)	
CIRCLING MDA (MDH)	6560 (604) -1 (1600 M)	6720 (764) -2 1/4 (3600 M)	6880 (924) -3 (4800 M)	

29-DIC-2022 AMDT AIRAC 13/22

SCT-AFAC-SENEAM

MMLO-IAC-1

CAMBIO: TEXTO