

CARTA DE APROXIMACION
POR INSTRUMENTOS
INSTRUMENT APPROACH
CHART (IAC)

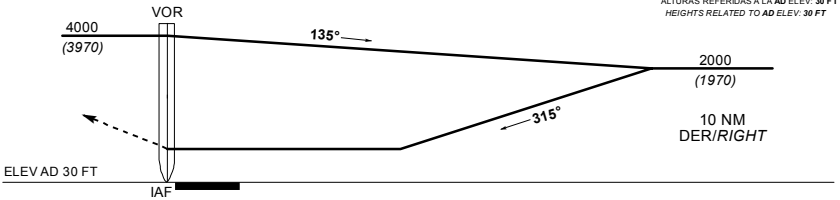
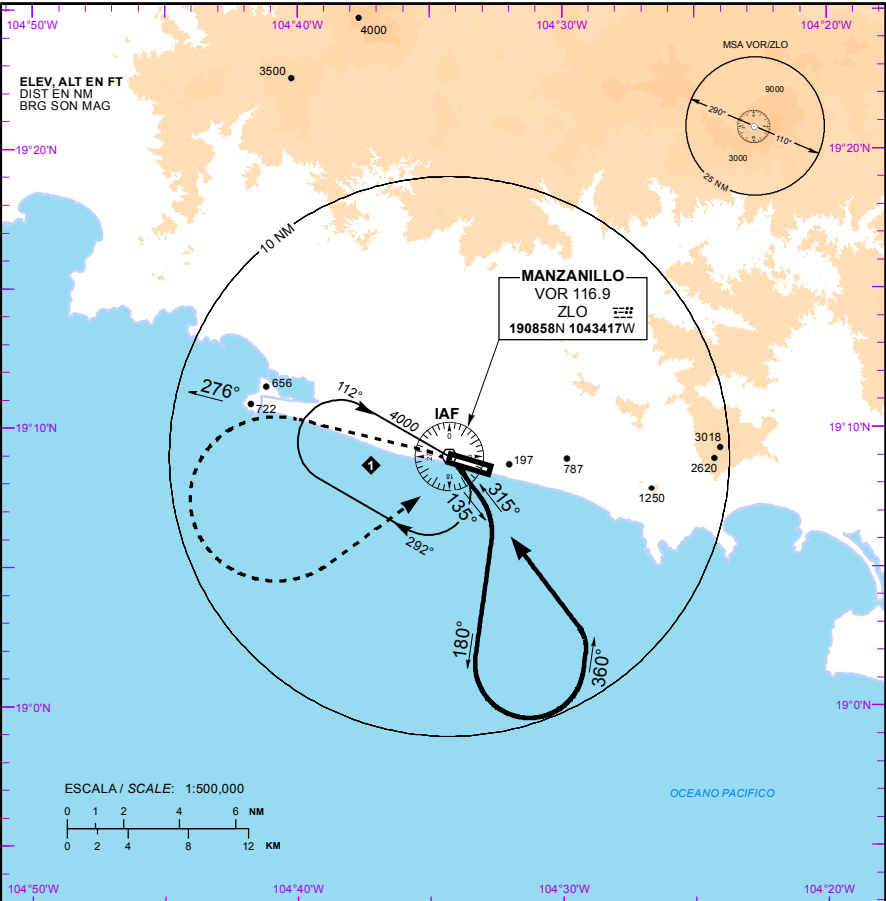
TWR/APP 118.7

AD ELEV : 30 FT
VAR 8° E

MANZANILLO
AEROPUERTO INTL / INTL AIRPORT
"MANZANILLO-COSTALEGRE"

TA: 18500 FT

VOR-A



APROXIMACION FRUSTRADA / MISSED APPROACH

ASCIENDA EN RADIAL 276° Y EFECTUE VIRAJE DE GOTA
A LA IZQUIERDA DENTRO DE 10 NM HACIA EL VOR/ZLO
HASTA LA ALTITUD MINIMA DE ESPERA.

CLIMB VIA ZLO VOR R-276°, TURN LEFT WITHIN 10 NM
TO VOR/ZLO AT THE MINIMUM HOLDING ALTITUDE.

DISTANCIA MAXIMA DE ALEJAMIENTO 7 NM DESDE EL MAPL
MAXIMUM DISTANCE TO TURN 7 NM FROM MAPL

| VEL GS (KTS) | 80 | 100 | 120 | 140 | 160 | 180 | 200 |
|--------------|------|------|------|------|------|------|------|
| MIN:SEC | 5:15 | 4:12 | 3:30 | 3:00 | 2:38 | 2:20 | 2:06 |

| CAT | A | B | C | D |
|---|----------------------------|---|--------------------------|---|
| - | - | - | - | - |
| DIRECTO/DIRECT MDA (MDH) | - | - | - | - |
| CIRCULANDO MDA (MDH) CNL SECTOR "M" DE RWY 10/28 | 980 (950) - 1 1/4 (2000 M) | - | 1100 (1070) - 3 (4800 M) | - |