

TWR 118.0
APP 123.5

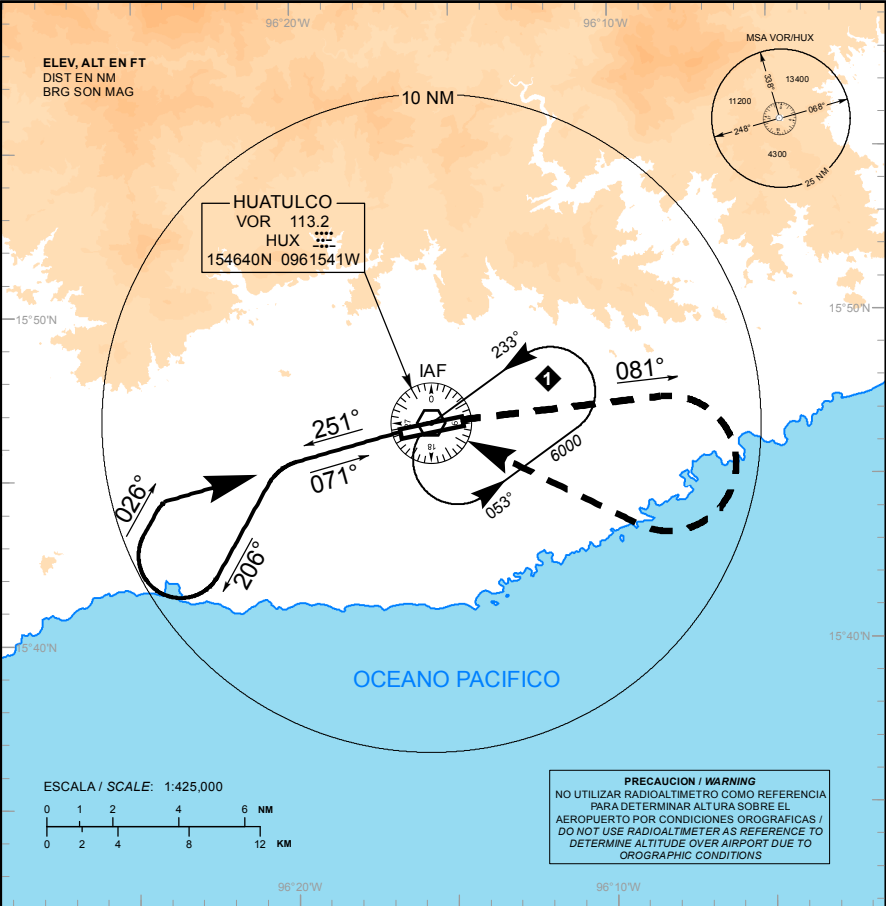
ELEV AD 464 FT
VAR 3° E

BAHIAS DE HUATULCO

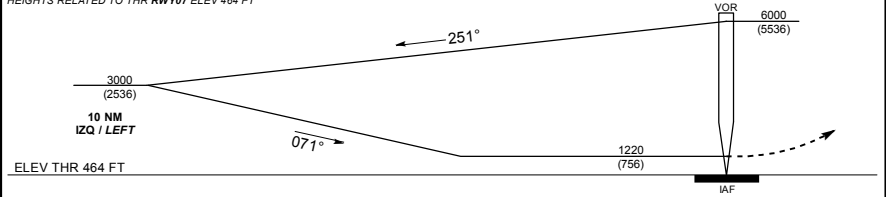
AEROPUERTO INTL /
INTL AIRPORT

VOR RWY 07

TA: 18500 FT



ALTURAS REFERIDAS AL THR RWY07 ELEV 464 FT
HEIGHTS RELATED TO THR RWY07 ELEV 464 FT



APROXIMACION FRUSTRADA / MISSED APPROACH

ASCIENDA EN RADIAL 081°, EFECTUE VIRAJE DE GOTA A LA DERECHA DENTRO DE 10 NM HACIA EL VOR/HUX HASTA LA ALTITUD MINIMA DE ESPERA.

CLIMB VIA HUX VOR R-081°. THEN TURN RIGHT WITHIN 10 NM TO VOR/HUX AT THE MINIMUM HOLDING ALTITUDE.

DISTANCIA MAXIMA DE ALEJAMIENTO 7 NM DESDE EL MAPL
MAXIMUM DISTANCE TO TURN 7 NM FROM MAPL

| VEL GS (KTS) | 80 | 100 | 120 | 140 | 160 | 180 | 200 |
|--------------|------|------|------|------|------|------|------|
| MIN : SEC | 5:15 | 4:12 | 3:30 | 3:00 | 2:38 | 2:20 | 2:06 |

| CAT | A | B | C | D |
|---|---------------------------|-----------------------------|-----------------------------|-----------------------------|
| - | - | - | - | - |
| DIRECTO/DIRECT MDA (MDH) | 1220 (756) - 1 (1600 M) | 1220 (756) - 1 1/4 (2000 M) | 1220 (756) - 2 1/4 (3600 M) | 1220 (756) - 2 1/2 (4000 M) |
| CIRCLING MDA (MDH) CNL SECTOR "N" RWY 0725 | 1220 (756) - 1 (1600 M) | 1220 (756) - 1 1/4 (2000 M) | 1220 (756) - 2 1/4 (3600 M) | 1220 (756) - 2 1/2 (4000 M) |

CAMBIO: ELEV THR