

# PLANO DE ESTACIONAMIENTO Y ATRAQUE DE AERONAVES / AIRCRAFT PARKING/DOCKING CHART

ELEV AD 141.5 M

TWR  
APP

118.0  
123.5

**BAHIAS DE HUATULCO**

AEROPUERTO INTL /  
INTL AIRPORT

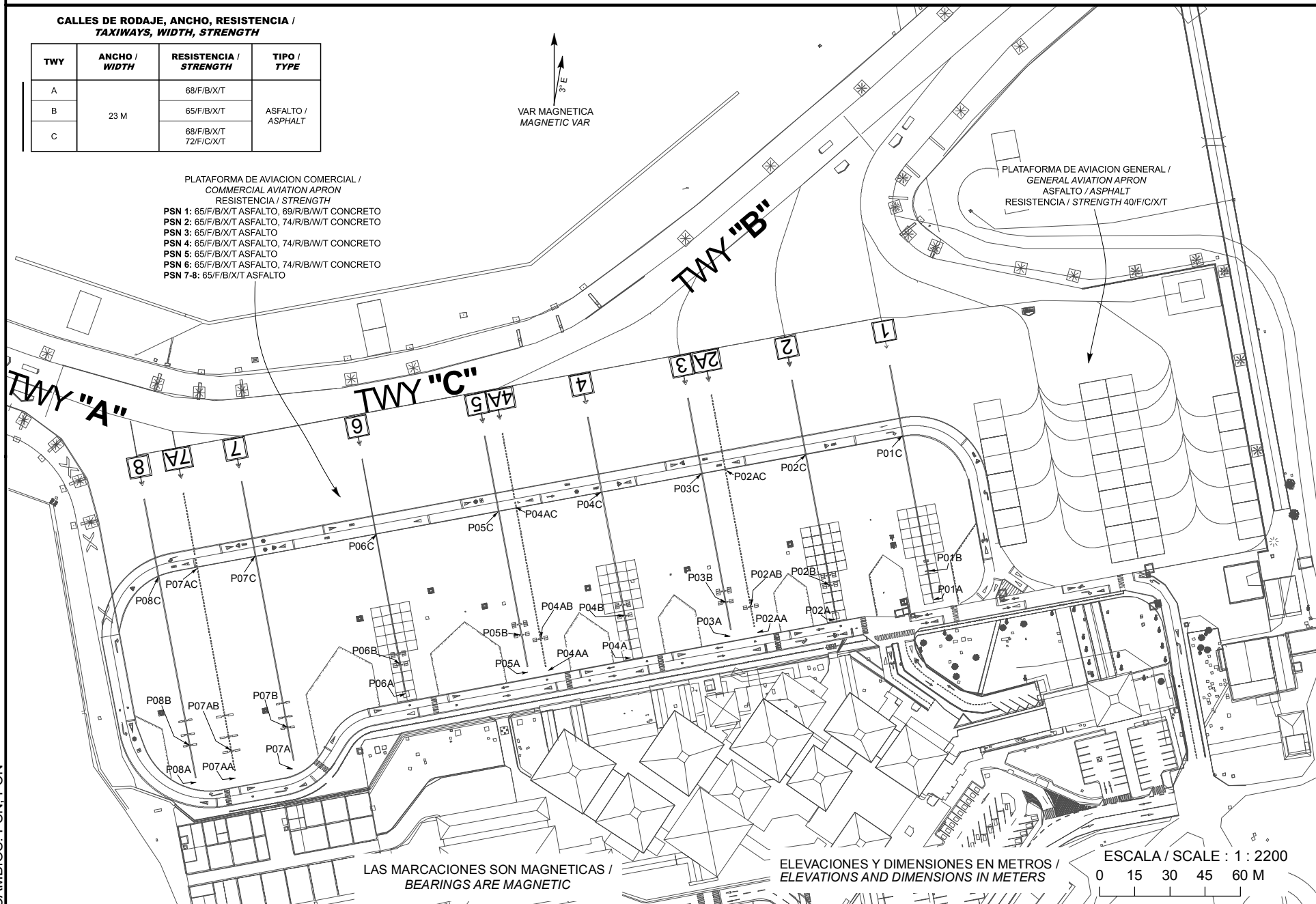
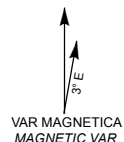
## CALLES DE RODAJE, ANCHO, RESISTENCIA / TAXIWAYS, WIDTH, STRENGTH

TWY	ANCHO / WIDTH	RESISTENCIA / STRENGTH	TIPO / TYPE
A	23 M	68/F/B/X/T	ASFALTO / ASPHALT
B		65/F/B/X/T	
C		68/F/B/X/T 72/F/C/X/T	

## PLATAFORMA DE AVIACION COMERCIAL / COMMERCIAL AVIATION APRON RESISTENCIA / STRENGTH

PSN 1: 65/F/B/X/T ASFALTO, 69/R/B/W/T CONCRETO  
PSN 2: 65/F/B/X/T ASFALTO, 74/R/B/W/T CONCRETO  
PSN 3: 65/F/B/X/T ASFALTO  
PSN 4: 65/F/B/X/T ASFALTO, 74/R/B/W/T CONCRETO  
PSN 5: 65/F/B/X/T ASFALTO  
PSN 6: 65/F/B/X/T ASFALTO, 74/R/B/W/T CONCRETO  
PSN 7-8: 65/F/B/X/T ASFALTO

## PLATAFORMA DE AVIACION GENERAL / GENERAL AVIATION APRON ASFALTO / ASPHALT RESISTENCIA / STRENGTH 40/F/C/X/T



**COORDENADAS INS DE PUESTOS DE ESTACIONAMIENTO DE AERONAVES AVIACION COMERCIAL /  
COORDINATES INS, FOR AIRCRAFT STANDS, COMMERCIAL AVIATION**

POSICION/ POSITION		LAT (N)	LONG (W)
P01	P01A	15° 46' 21.8547"	096° 15' 29.1052"
	P01B	15° 46' 22.2623"	096° 15' 29.1846"
	P01C	15° 46' 24.0978"	096° 15' 29.5465"
P02	P02A	15° 46' 21.6507"	096° 15' 30.4509"
	P02B	15° 46' 22.0929"	096° 15' 30.5377"
	P02C	15° 46' 23.8489"	096° 15' 30.8830"
P02A	P02AA	15° 46' 21.4240"	096° 15' 31.5644"
	P02AB	15° 46' 21.8072"	096° 15' 31.6357"
	P02AC	15° 46' 23.6433"	096° 15' 31.9984"
P03	P03A	15° 46' 21.4359"	096° 15' 31.8962"
	P03B	15° 46' 21.8694"	096° 15' 31.9800"
	P03C	15° 46' 23.5829"	096° 15' 32.3170"
P04	P04A	15° 46' 21.1428"	096° 15' 33.2649"
	P04B	15° 46' 21.6753"	096° 15' 33.3723"
	P04C	15° 46' 23.3278"	096° 15' 33.6964"
P04A	P04AA	15° 46' 20.8908"	096° 15' 34.4494"
	P04AB	15° 46' 21.3598"	096° 15' 34.5387"
	P04AC	15° 46' 23.1069"	096° 15' 34.8811"
P05	P05A	15° 46' 20.9116"	096° 15' 34.6977"
	P05B	15° 46' 21.4115"	096° 15' 34.7957"
	P05C	15° 46' 23.0630"	096° 15' 35.1201"
P06	P06A	15° 46' 20.5581"	096° 15' 36.3819"
	P06B	15° 46' 21.0010"	096° 15' 36.4719"
	P06C	15° 46' 22.7497"	096° 15' 36.8162"
P07	P07A	15° 46' 19.6504"	096° 15' 37.9323"
	P07B	15° 46' 20.1535"	096° 15' 38.0274"
	P07C	15° 46' 22.4401"	096° 15' 38.4784"
P07A	P07AA	15° 46' 19.5040"	096° 15' 38.7314"
	P07AB	15° 46' 19.8330"	096° 15' 38.7989"
	P07AC	15° 46' 22.2904"	096° 15' 39.2823"
P08	P08A	15° 46' 19.4042"	096° 15' 39.2711"
	P08B	15° 46' 19.9091"	096° 15' 39.3723"
	P08C	15° 46' 22.1759"	096° 15' 39.8162"