

CARTA DE APROXIMACION POR INSTRUMENTOS (IAC)

INSTRUMENT APPROACH CHART (IAC)

POZA RICA / TAJIN NTL (MMPA)

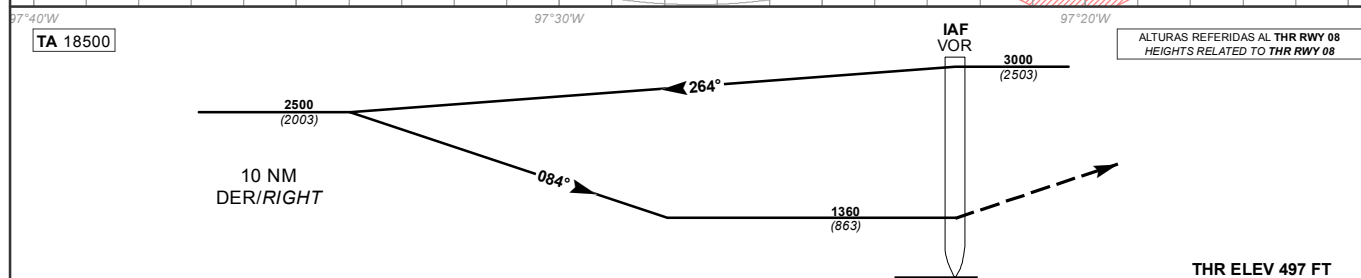
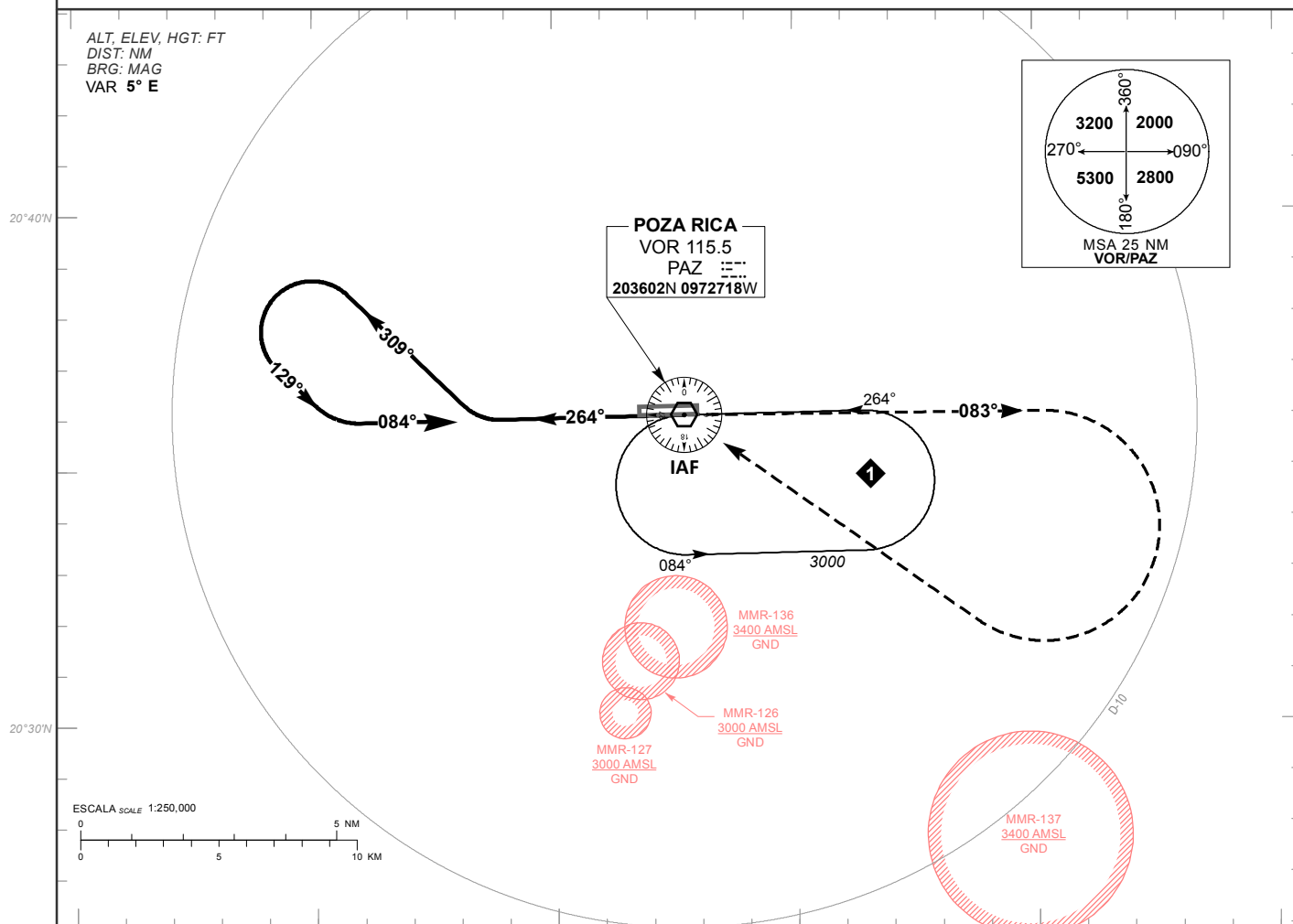
VOR RWY 08

| | | |
|---------------------|---------------------|-----------------------|
| TWR 118.9 | APP 128.0 | AD ELEV 497 FT |
|---------------------|---------------------|-----------------------|

APCH FRUSTRADA: ASCIENDA EN **RADIAL 083°** Y EFECTUE VIRAJE DE GOTA A LA **DERECHA** DENTRO DE **10 NM** HACIA EL **VOR/PAZ** HASTA LA ALTITUD MINIMA DE ESPERA.

MISSED APCH: CLIMB VIA **PAZ VOR-R-083°** THEN TURN **RIGHT** WITHIN **10 NM** TO **VOR/PAZ** AT THE MINIMUM HOLDING ALTITUDE.

RMK: -NO UTILIZAR RADIOALTIMETRO COMO REFERENCIA PARA DETERMINAR ALTURA SOBRE EL AEROPUERTO POR CONDICIONES OROGRAFICAS *DO NOT USE RADIO ALTIMETER AS REFERENCE TO DETERMINE ALTITUDE OVER AIRPORT DUE TO OROGRAPHIC CONDITIONS*



| DISTANCIA MAXIMA DE ALEJAMIENTO 7NM DESDE EL MAPT MAXIMUM DISTANCE TO TURN 7NM FROM MAPT | | GS (KTS) | 80 | 100 | 120 | 140 | 160 | 180 | 200 |
|---|-----------------------------|-----------|------|------|------|------------------------------------|------|------|------|
| | | MIN : SEC | 5:15 | 4:12 | 3:30 | 3:00 | 2:38 | 2:20 | 2:06 |
| CAT | DIRECTO STRAIGHT-IN | | | | | CIRCULANDO CIRCLING | | | |
| | MDA (MDH) 1360 (863) | | | | | MDA (MDH) | | | |
| | 1 (1600 M) | | | | | 1360 (863) - 1 (1600 M) | | | |
| | 1 1/4 (2000 M) | | | | | 1360 (863) - 1 1/4 (2000 M) | | | |
| | 2 1/2 (4000 M) | | | | | 1360 (863) - 2 1/2 (4000 M) | | | |
| | 2 3/4 (4400 M) | | | | | 1360 (863) - 2 3/4 (4400 M) | | | |

CAMBIO: ELEV THR.