

CARTA DE APROXIMACION
POR INSTRUMENTOS
INSTRUMENT APPROACH
CHART (IAC)

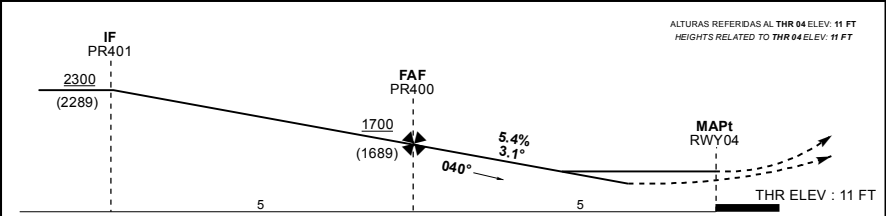
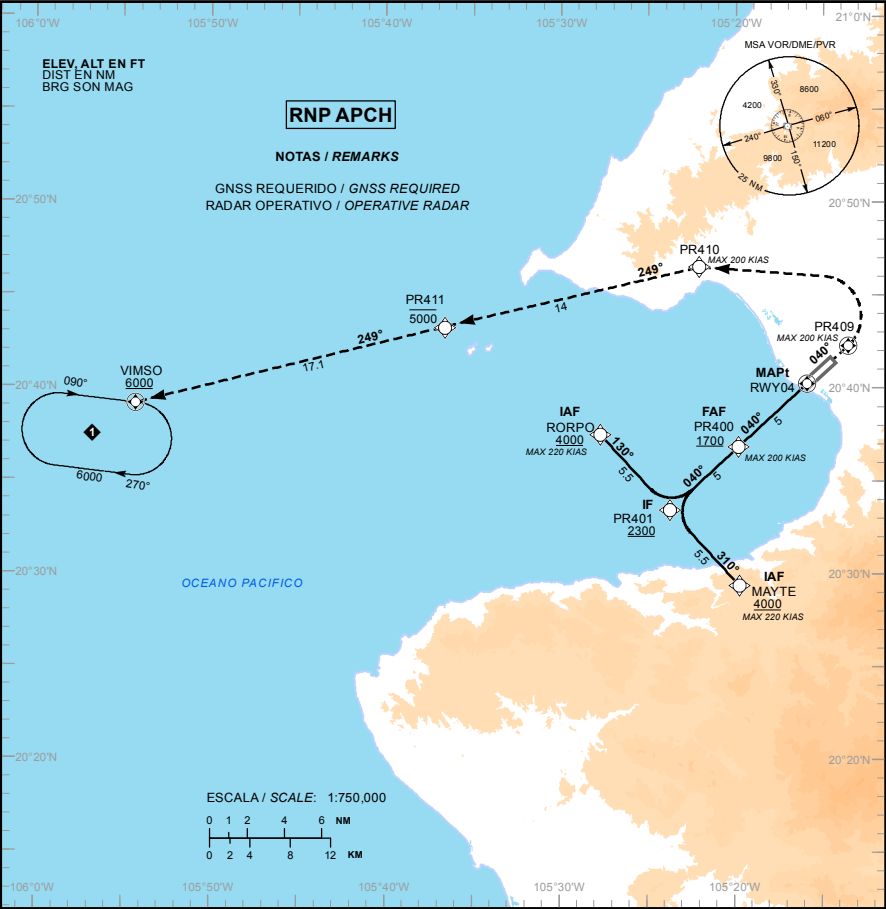
| | |
|-------|--------------|
| TWR | 118.5 |
| APP | 121.3, 119.0 |
| ATIS | 127.5 |
| EMERG | 121.5 |

PUERTO VALLARTA
AEROPUERTO INTL / INTL AIRPORT
LIC. GUSTAVO DIAZ ORDAZ

TA: 18500 FT

AD ELEV : 23 FT
VAR 7° E

RNP RWY 04



| APROXIMACION FRUSTRADA / MISSED APPROACH | | | GRADIENTE DE DESCENSO / RATE OF DESCENT | | | | | | | | |
|--|------------------------|---|---|----------------|----------------------------|----------------|--------------|------|----------------------------|------|------|
| ASCIENDA EN RUMBO DE PISTA HASTA PR409 Y PROSIGA EN APROXIMACION FRUSTRADA HASTA 6000 FT EN VIMSO Y CONTINUE EN PATRON DE ESPERA. | | | FAF - THR | VEL GS (KTS) | 80 | 100 | 120 | 140 | 160 | 180 | 200 |
| | | | 5 NM | FT / NM | 437 | 547 | 656 | 765 | 875 | 984 | 1093 |
| | | | 5.4% | MIN : SEC | 3:45 | 3:00 | 2:30 | 2:09 | 1:52 | 1:40 | 1:30 |
| CLIMB ON RUNWAY TRACK TO PR409 AND PROCEED ON THE MISSED APPROACH TO HOLDING PATTERN ON VIMSO AT 6000 FT. | | | ALTITUD MINIMA SEGUN DISTANCIA / MINIMUM ALTITUDE ACCORDING TO DISTANCE | | | | | | | | |
| | | | NM | 5 | 4 | 3 | 2 | | | | |
| | | | FT | 1700 (1689) | 1370 (1359) | 1040 (1029) | 720 (709) | | | | |
| CAT | A | B | C | | | | D | | | | |
| LNAB/VNAV DA (DH) | | | | | | | | | | | |
| LNAB MDA (MDH) | 560 (549) - 1 (1600 M) | | | | 560 (549) - 1 1/2 (2400 M) | | | | 560 (549) - 1 3/4 (2800 M) | | |
| CIRCULANDO CIRCLING | 620 (597) - 1 (1600 M) | | | | 740 (717) - 2 (3200 M) | | | | 960 (937) - 3 (4800 M) | | |

CAMBIO: SIMBOLOGIA

TABLA DE CODIFICACIÓN DEL PROCEDIMIENTO DE APROXIMACIÓN POR INSTRUMENTOS RNP PISTA 04.
RUNWAY 04 RNP INSTRUMENT APPROACH PROCEDURE CODING TABLE.

IAF RORPO

| Número de serie / Serial Number | Descriptor de trayectoria / Path terminator | Identificador de punto de recorrido / Waypoint Identifier | Sobrevuelo / Fly Over | Curso / derrota Course / Track *MAG (*T) | Variación Magnética / Magnetic variation (*) | Distancia / Distance (NM) | Dirección del Viraje / Turn direction | Altitud / Altitude (FT) | Velocidad / Velocity (KTS) | VPA (*) / TCH (FT) | Especificación de Navegación / Navigation Specification |
|---------------------------------|---|---|-----------------------|--|--|---------------------------|---------------------------------------|-------------------------|----------------------------|--------------------|---|
| 001 | IF | RORPO | - | - | -7 | - | - | +4000 | -220 | - | RNAV 1 |
| 002 | TF | PR401 | - | 130 (137.2) | -7 | 5.5 | - | +2300 | - | - | RNAV 1 |
| 003 | TF | PR400 | - | 040 (047.2) | -7 | 5 | - | +1700 | -200 | - | RNAV 1 |
| 004 | TF | RWY04 | Y | 040 (047.2) | -7 | 5 | - | - | -200 | -3.1 (50) | RNP APCH |
| 005 | CF | PR409 | Y | 040 (047.2) | -7 | - | - | - | -200 | - | RNP APCH |
| 006 | DF | PR410 | - | - | -7 | - | - | - | -200 | - | RNAV 1 |
| 007 | TF | PR411 | - | 249 (256.4) | -7 | 14 | - | -5000 | - | - | RNAV 1 |
| 008 | TF | VIMSO | Y | 249 (256.4) | -7 | 17.1 | - | +6000 | - | - | RNAV 1 |

IAF MAYTE

| Número de serie / Serial Number | Descriptor de trayectoria / Path terminator | Identificador de punto de recorrido / Waypoint Identifier | Sobrevuelo / Fly Over | Curso / derrota Course / Track *MAG (*T) | Variación Magnética / Magnetic variation (*) | Distancia / Distance (NM) | Dirección del Viraje / Turn direction | Altitud / Altitude (FT) | Velocidad / Velocity (KTS) | VPA (*) / TCH (FT) | Especificación de Navegación / Navigation Specification |
|---------------------------------|---|---|-----------------------|--|--|---------------------------|---------------------------------------|-------------------------|----------------------------|--------------------|---|
| 001 | IF | MAYTE | - | - | -7 | - | - | +4000 | -220 | - | RNAV 1 |
| 002 | TF | PR401 | - | 310 (317.2) | -7 | 5.5 | - | +2300 | - | - | RNAV 1 |
| 003 | TF | PR400 | - | 040 (047.2) | -7 | 5 | - | +1700 | -200 | - | RNAV 1 |
| 004 | TF | RWY04 | Y | 040 (047.2) | -7 | 5 | - | - | -200 | -3.1 (50) | RNP APCH |
| 005 | CF | PR409 | Y | 040 (047.2) | -7 | - | - | - | -200 | - | RNP APCH |
| 006 | DF | PR410 | - | - | -7 | - | - | - | -200 | - | RNAV 1 |
| 007 | TF | PR411 | - | 249 (256.4) | -7 | 14 | - | -5000 | - | - | RNAV 1 |
| 008 | TF | VIMSO | Y | 249 (256.4) | -7 | 17.1 | - | +6000 | - | - | RNAV 1 |

CODIFICACIÓN DE LAS ESPERAS
CODING TABLE FOR HOLDINGS

| Descriptor de trayectoria / Path terminator | Identificador de punto de recorrido / Waypoint Identifier | Rumbo de acercamiento / Approach heading *M (*T) | Tiempo / Time | Dirección del viraje / Turn direction | Altitud mínima / Minimum altitude (FT) | Altitud máxima / Maximum altitude (FT) | Límite de Velocidad / Speed Limit (KT) | Declinación magnética / Magnetic declination (*) | Especificación de Navegación / Navigation specification |
|---|---|--|------------------|---------------------------------------|--|--|--|--|---|
| Espera/ Holding | VIMSO | 090 (097.0) | 1 Minuto/ Minute | Derecha / Right | 6000 | - | -230 | -7 | RNAV 1 |

COORDENADAS DE LOS PUNTOS DE RECORRIDO
WAYPOINT COORDINATES

| Punto de recorrido / Waypoint | Coordenadas / Coordinates | Punto de recorrido / Waypoint | Coordenadas / Coordinates |
|-------------------------------|-------------------------------|-------------------------------|--------------------------------|
| MAYTE | 20°29'21.5"N 105°19'44.6"W | PR411 | 20°43'11.04"N 105°36'36.2"W |
| PR400 | 20°36'49.2"N 105°19'49.1"W | RORPO | 20°37'27.4"N 105°27'42.7"W |
| PR401 | 20°33'24.5"N 105°23'43.6"W | RWY04 | 20°40'13.9"N 105°15'54.5"W |
| PR409 | 20°42'16.7"N 105°13'33.7"W | VIMSO | 20°39'07.3"N 105°54'16.2"W |
| PR410 | 20°46'29.8"N 105°22'05.2"W | | |