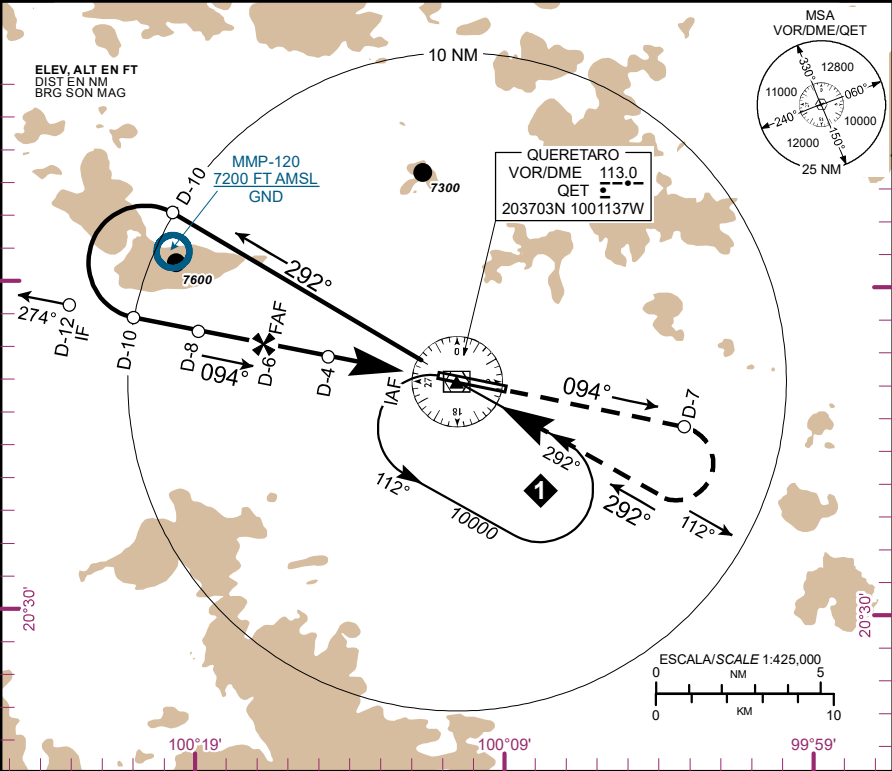


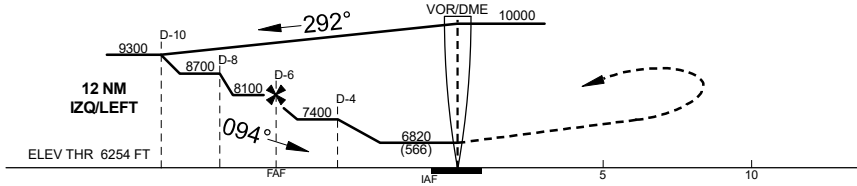
|     |        |   |
|-----|--------|---|
| TWR | 118.95 | ELEV AD 6296 FT<br>VAR 7° E                           |
|     | 127.2  |   |
| APP | 127.2  | ALTITUD DE TRANSICION<br>TRANSITION ALTITUDE<br>18500 |

QUERETARO  
AEROPUERTO INTL / INTL AIRPORT  
INTERCONTINENTAL  
VOR/DME 1 RWY 09



APROXIMACION FRUSTRADA / MISSED APPROACH

ASCIENDA EN RADIAL 094° HASTA D-7. EFECTUE VIRAJE DE GOTAA LA DERECHA DENTRO DE 10 NM E INTERCEPTE EL RADIAL 112° HACIA EL VOR/DME/QETHASTA LA ALTITUD MINIMA DE ESPERA.  
CLIMB OUTBOUND ON QET VOR R-094° TO D-7, TURN RIGHT WITHIN 10 NM AND INTERCEPT QET VOR R-112° INBOUND TO VOR/DME/QET TO THE MINIMUM HOLDING ALTITUDE.



APROXIMACION FRUSTRADA  
MISSED APPROACH  
DISTANCIA MAXIMA DE ALEJAMIENTO 7 NM DESDE EL MAP1  
MAXIMUM DISTANCE TO TURN 7 NM FROM MAP1

| VEL GS (KTS) | 80   | 100  | 120  | 140  | 160  | 180  | 200  |
|--------------|------|------|------|------|------|------|------|
| MIN:SEC      | 5:15 | 4:12 | 3:30 | 3:00 | 2:37 | 2:20 | 2:06 |

| D-4 MAP1<br>4 NM<br>5.1 % | VEL GS (KTS) | 80   | 100  | 120  | 140  | 160  | 180  | 200  |
|---------------------------|--------------|------|------|------|------|------|------|------|
|                           | FT/MIN       | 416  | 520  | 624  | 728  | 832  | 936  | 1040 |
|                           | MIN:SEC      | 3:00 | 2:24 | 2:00 | 1:43 | 1:30 | 1:20 | 1:12 |

ALTITUD SEGUN DISTANCIA DME/QET  
ALTITUDE ACCORDING TO DISTANCE DME/QET

| NM | 4    | 3    | 2    |
|----|------|------|------|
| FT | 7400 | 7090 | 6780 |

| CAT                         | A                       | B | C                           | D                           |
|-----------------------------|-------------------------|---|-----------------------------|-----------------------------|
| DIRECT MDA (MDH) 6820 (566) | 1 (1600 M)              |   | 1 5/8 (2600 M)              |                             |
| CIRCLING MDA (MDH)          | 7040 (744) - 1 (1600 M) |   | 7040 (744) - 2 1/4 (3600 M) | 7040 (744) - 2 1/2 (4000 M) |