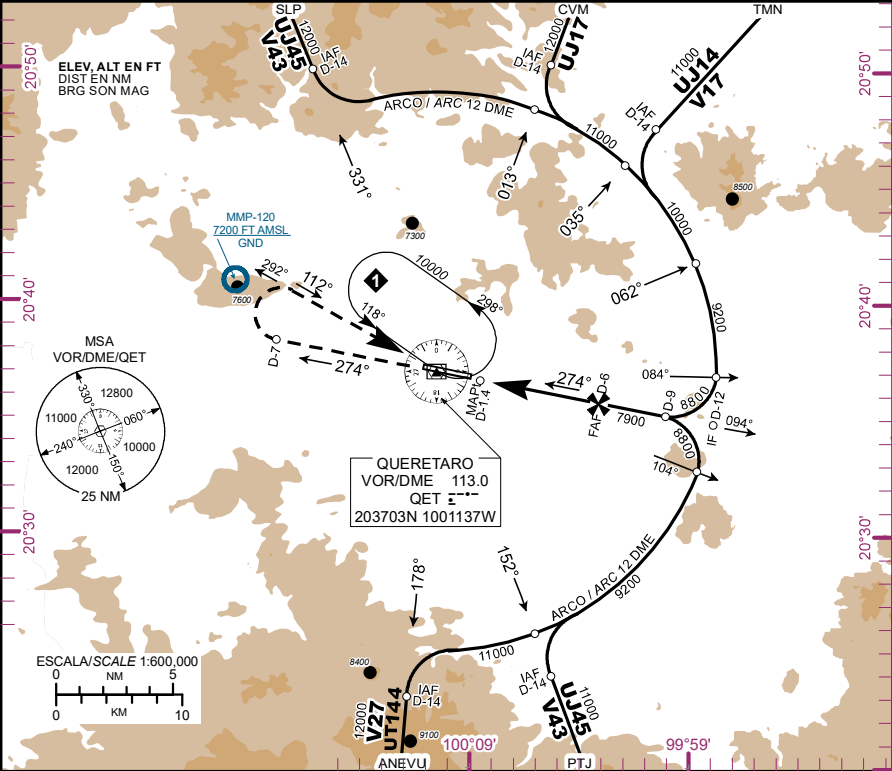


CARTA DE APROXIMACION
POR INSTRUMENTOS
INSTRUMENT
APPROACH CHART
(IAC)

TWR	118.95
APP	127.2

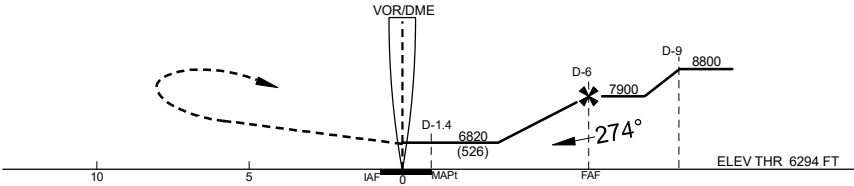
ELEV AD 6296 FT
VAR 7° E
ALTITUD DE TRANSICION TRANSITION ALTITUDE 18500

QUERETARO
AEROPUERTO INTL / INTL AIRPORT
INTERCONTINENTAL
VOR/DME 2 RWY 27



APROXIMACION FRUSTRADA / MISSED APPROACH

ASCIENDA EN RADIAL 274° HASTA D-7, EFECTUE VIRAJE DE GOTA A LA DERECHA DENTRO DE 10 NM E INTERCEPTE EL RADIAL 292° HACIA EL VOR/DME/QET HASTA LA ALTITUD MINIMA DE ESPERA.
CLIMB OUTBOUND ON QET VOR R-274° TO D-7, TURN RIGHT WITHIN 10 NM AND INTERCEPT QET VOR R-292° INBOUND TO VOR/DME/QET TO THE MINIMUM HOLDING ALTITUDE.



APROXIMACION FRUSTRADA
MISSED APPROACH
DISTANCIA MAXIMA DE ALEJAMIENTO 8.4 NM DESDE EL MAP1
MAXIMUM DISTANCE TO TURN 8.4 NM FROM MAP1

FAF-MAP1 4.61 NM 5.6 %	VEL GS (KTS)	80	100	120	140	160	180	200
	FT/MIN	450	563	675	788	900	1013	1125
	MIN:SEC	3:27	2:46	2:18	1:59	1:44	1:32	1:23

VEL GS (KTS)	80	100	120	140	160	180	200
MIN:SEC	6:18	5:02	4:12	3:36	3:09	2:48	2:31

ALTITUD SEGUN DISTANCIA DME/QET
ALTITUDE ACCORDING TO DISTANCE DME/QET

NM	6	5	4	3
FT	7900	7560	7220	6890

CAT	A	B	C	D
DIRECT MDA (MDH) 6820 (526)	1 (1600 M)		1 1/2 (2400 M)	
CIRCLING MDA (MDH)	7040 (744) - 1 (1600 M)		7040 (744) - 2 1/4 (3600 M)	7040 (744) - 2 1/2 (4000 M)