

PLANO DE ESTACIONAMIENTO Y ATRAQUE DE AERONAVES / AIRCRAFT PARKING/DOCKING CHART

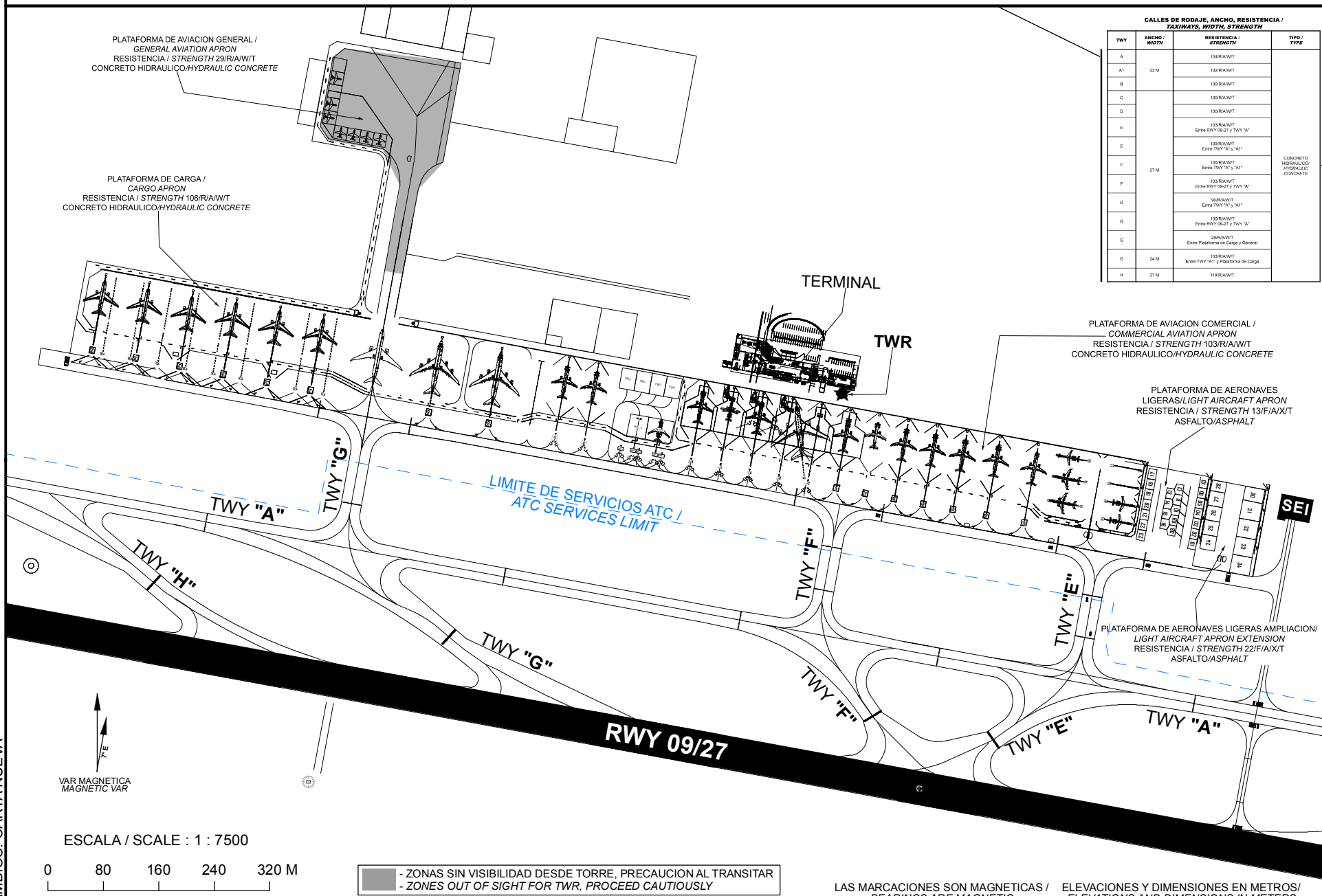
ELEV AD 1919 M

TWR
APP

118.95
127.2

AFTN - MMQT

QUERETARO
AEROPUERTO INTL /
INTL AIRPORT
INTERCONTINENTAL DE QUERETARO



CAMBIOS: CARTA NUEVA

20-ABR-2023 AMDT AIRAC 04/23

SCT-AFAC-SENEAM

2-7 MMQT PDC

COORDENADAS INS, DE PUESTOS DE ESTACIONAMIENTO DE AERONAVES AVIACION COMERCIAL /
COORDINATES INS, FOR AIRCRAFT STANDS, COMMERCIAL AVIATION APRON

POSICION/ POSITION	LAT (N)	LONG (W)
1E	20° 37' 18.755"	100° 11' 11.636"
2E	20° 37' 18.623"	100° 11' 10.288"
3E	20° 37' 18.433"	100° 11' 08.904"
4E	20° 37' 18.463"	100° 11' 07.486"
5E	20° 37' 18.210"	100° 11' 06.123"
6E	20° 37' 17.599"	100° 11' 04.639"
7E	20° 37' 17.597"	100° 11' 02.798"
8E	20° 37' 15.239"	100° 11' 02.309"
9E	20° 37' 16.303"	100° 11' 02.097"
10E	20° 37' 17.224"	100° 11' 01.912"
11E	20° 37' 16.531"	100° 10' 58.160"
12E	20° 37' 15.747"	100° 10' 58.316"
13E	20° 37' 14.967"	100° 10' 58.474"
14E	20° 37' 14.182"	100° 10' 58.632"

POSICION/ POSITION	LAT (N)	LONG (W)
1	20° 37' 19.216"	100° 11' 12.962"
2	20° 37' 19.460"	100° 11' 14.315"
2A	20° 37' 19.488"	100° 11' 14.063"
3	20° 37' 19.709"	100° 11' 15.686"
4	20° 37' 19.965"	100° 11' 17.056"
5	20° 37' 20.232"	100° 11' 18.415"
6	20° 37' 21.186"	100° 11' 23.400"
7	20° 37' 20.607"	100° 11' 24.926"
8	20° 37' 22.045"	100° 11' 27.882"
9	20° 37' 22.557"	100° 11' 30.670"

COORDENADAS INS, DE PUESTOS DE ESTACIONAMIENTO PLATAFORMA DE CARGA /
COORDINATES INS, FOR AIRCRAFT STANDS, CARGO APRON

POSICION/ POSITION	LAT (N)	LONG (W)
1CA	20° 37' 23.297"	100° 11' 35.604"
1C	20° 37' 23.387"	100° 11' 36.216"
2CA	20° 37' 23.524"	100° 11' 36.861"
2C	20° 37' 23.964"	100° 11' 38.223"
3C	20° 37' 24.373"	100° 11' 40.248"
4CA	20° 37' 24.240"	100° 11' 40.762"
4C	20° 37' 24.240"	100° 11' 40.762"
5CA	20° 37' 24.476"	100° 11' 42.042"
5C	20° 37' 24.93"	100° 11' 44.36"
6CA	20° 37' 24.57"	100° 11' 43.36"
7CA	20° 37' 24.81"	100° 11' 43.64"
8CA	20° 37' 25.05"	100° 11' 43.93"
9CA	20° 37' 25.30"	100° 11' 46.39"