

CARTA DE APROXIMACION  
POR INSTRUMENTOS (IAC)

INSTRUMENT APPROACH CHART (IAC)

SANTA LUCIA / FELIPE ANGELES INTL (MMSM)

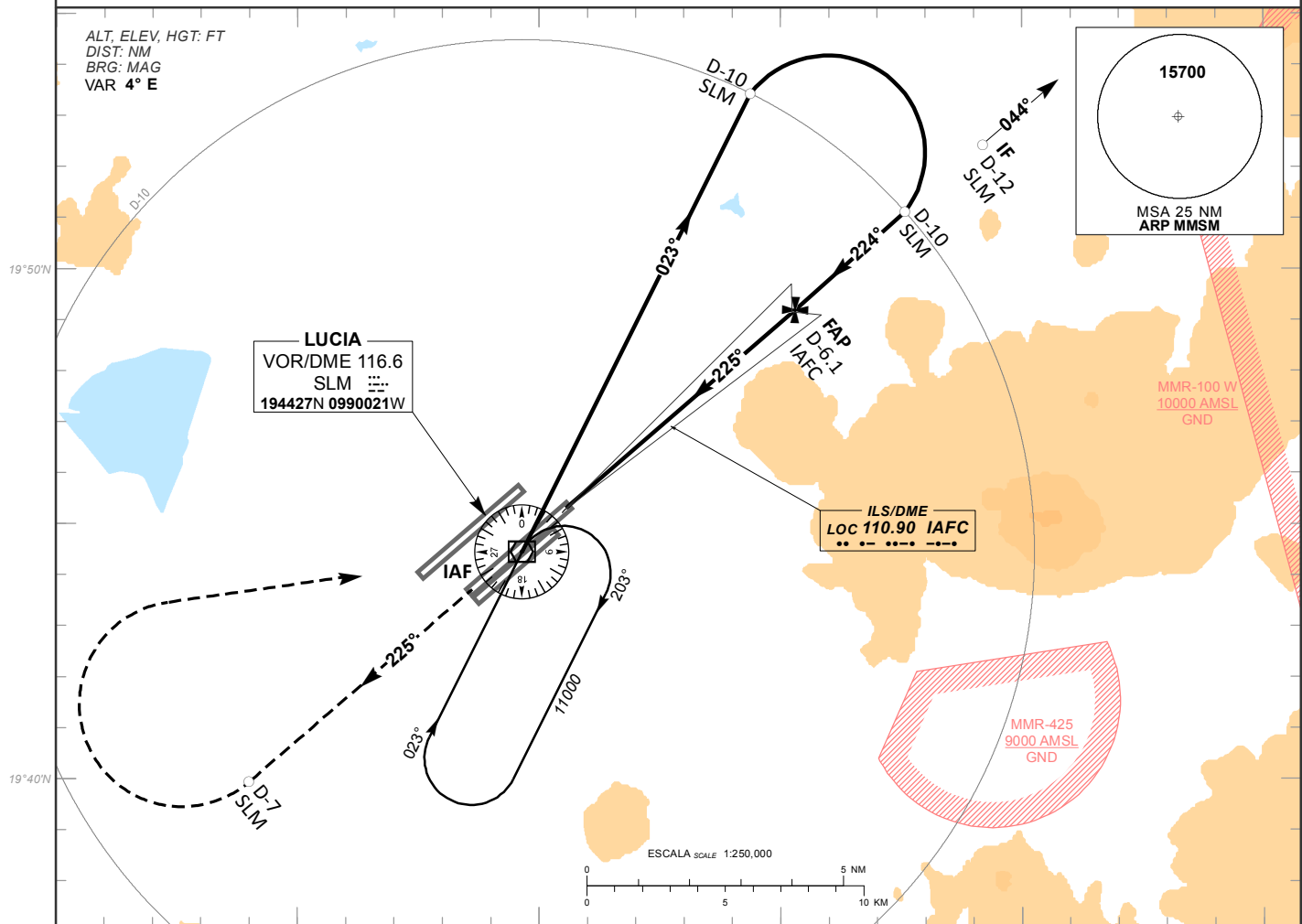
ILS Y RWY 22C  
LOC RWY 22C

TWR 118.25, 118.30	APP 119.0, 128.85	D-ATIS 127.70	EMERG 121.50	AD ELEV 7362 FT
-----------------------	----------------------	------------------	-----------------	-----------------

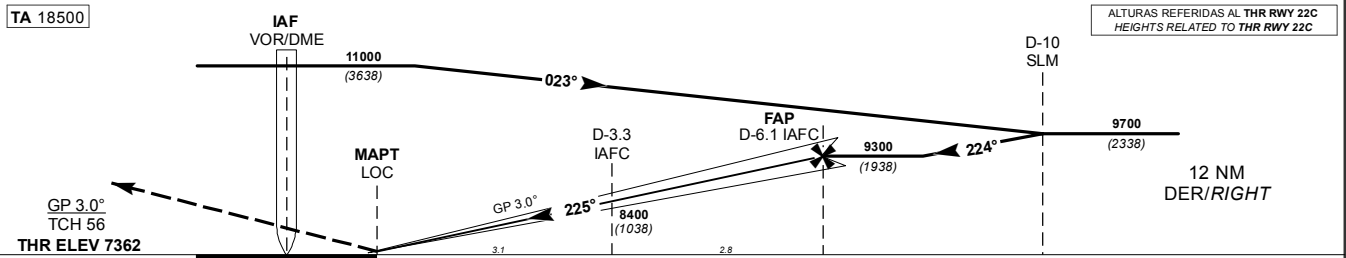
APCH FRUSTRADA: ASCIENDA EN RADIAL 225° HASTA D-7 SLM, EFECTUE VIRAJE DE GOTA A LA DERECHA HACIA EL VOR/DME/SLM HASTA LA ALTITUD MINIMA DE ESPERA O INSTRUCCIONES DEL ATC.

MISSED APCH: CLIMB VIA SLM VOR R-225° TO D-7 SLM, THEN TURN RIGHT TO VOR/DME/SLM AT MINIMUM HOLDING ALTITUDE OR ATC INSTRUCTIONS.

RMK: -



TA 18500



GRADIENTE DE DESCENSO RATE OF DESCENT	FAP-MAPT 5.9				5.2% (3.0°)				ALTITUD MINIMA SEGUN DISTANCIA MINIMUM ALTITUDE ACCORDING TO DISTANCE	NM	5	4	3	2	1
	GS (KTS)	80	100	120	140	160	180	200		FT	8950	8630	8310	7990	7670
	FT / NM	425	532	638	744	851	957	1063			(1588)	(1268)	(948)	(628)	(308)
	MIN : SEC	4:26	3:32	2:57	2:32	2:13	1:58	1:46							

CAT	CAT I		LOC		CIRCULANDO CIRCLING	
	DA (DH) 7562 (200)		MDA (MDH) 8000 (638)		CNL SECTOR "S" RWY 04C/22C MDA (MDH)	
	1/2 (800 M)		1/2 (800 M)		8050 (688) - 1 (1600 M)	
			1 3/8 (2200 M)		8560 (1198) - 3 (4800 M)	

CAMBIO: CARTA NUEVA.