

CARTA DE APROXIMACION
POR INSTRUMENTOS
INSTRUMENT APPROACH
CHART (IAC)

TWR 118.100
CTAF 122.5

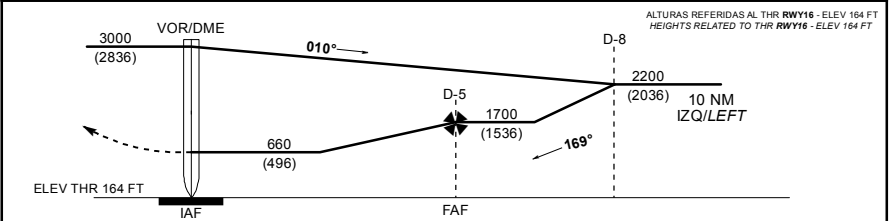
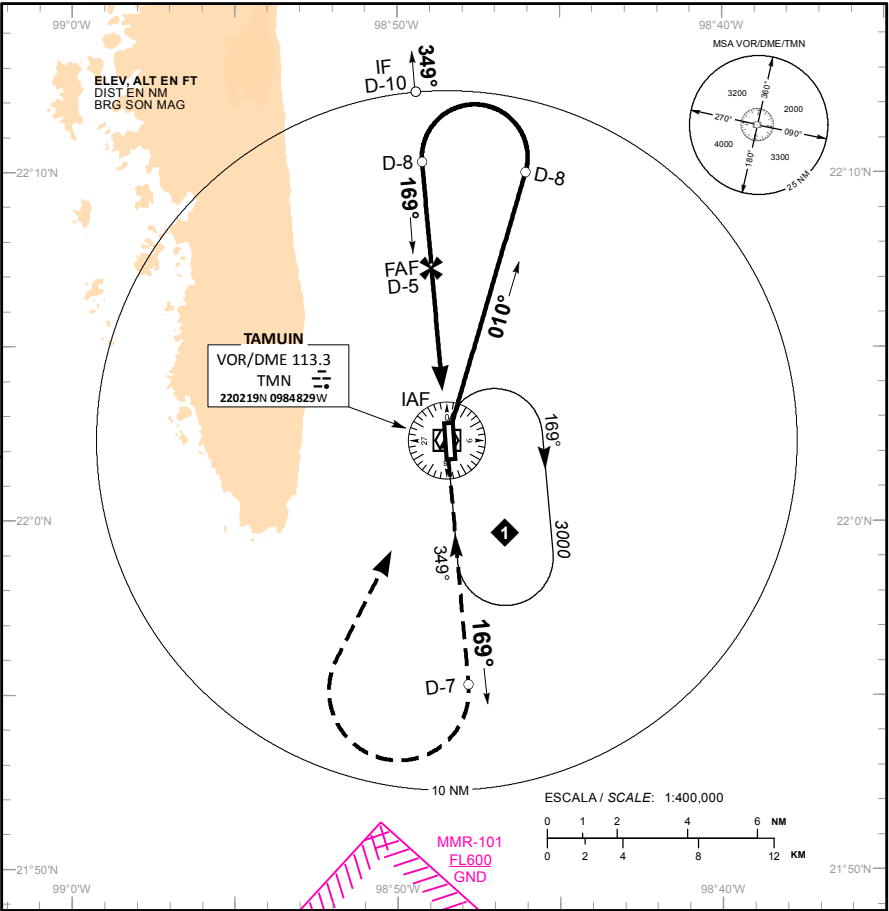
AD ELEV : 164 FT

VAR 6° E

TAMUIN
AEROPUERTO INTL / INTL AIRPORT

VOR/DME RWY 16

TA: 18500 FT



| | | | | | | | | | | | |
|---|------------------------|---|---|----------------------------|---------------|--------------|------|------|------|------|------|
| APROXIMACION FRUSTRADA / MISSED APPROACH | | | GRADIENTE DE DESCENSO / RATE OF DESCENT | | | | | | | | |
| ASCIENDA EN RADIAL 169° HASTA D-7. EFECTUE VIRAJE DE GOTAA LA DERECHA DENTRO DE 10 NM HACIA EL VOR/DME/TMN HASTA LA ALTITUD MINIMA DE ESPERA. | | | FAF - THR | VEL GS (KTS) | 80 | 100 | 120 | 140 | 160 | 180 | 200 |
| | | | 4.6 NM | FT / NM | 431 | 538 | 646 | 754 | 861 | 969 | 1077 |
| | | | 5.32% | MIN : SEC | 3:45 | 3:00 | 2:30 | 2:09 | 1:52 | 1:40 | 1:30 |
| CLIMB VIA TMN VOR R-169° TO D-7. THEN TURN RIGHT WITHIN 10 NM TO VOR/DME/TMN AT THE MINIMUM HOLDING ALTITUDE. | | | ALTITUD MINIMA SEGUN DISTANCIA / MINIMUM ALTITUDE ACCORDING TO DISTANCE | | | | | | | | |
| | | | NM | 4 | 3 | 2 | | | | | |
| | | | FT | 1380 (1216) | 1050 (886) | 730 (566) | | | | | |
| CAT | A | B | C | | | D | | | | | |
| | | | | | | | | | | | |
| DIRECTO MDA (MDH) | 660 (496) - 1 (1600 M) | | | 660 (496) - 1 1/4 (2000 M) | | | | | | | |
| CIRCULANDO CIRCLING | 740 (576) - 1 (1600 M) | | | 740 (576) - 1 1/2 (2400 M) | | | | | | | |