

CARTA DE APROXIMACION  
POR INSTRUMENTOS  
INSTRUMENT APPROACH  
CHART (IAC)

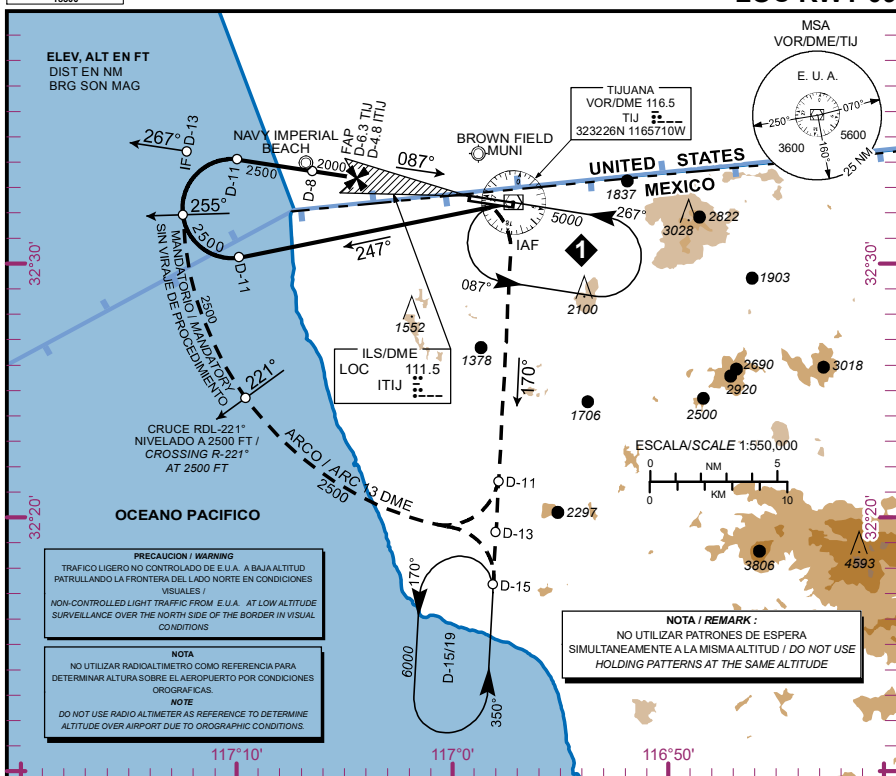
ALTITUD DE TRANSICION  
TRANSITION ALTITUDE  
18500

ATIS 127.9  
TWR 118.1  
APP 119.5 O 120.3  
RIS 132.1  
EMERG 121.5  
CD 122.35

ELEV AD 487 FT

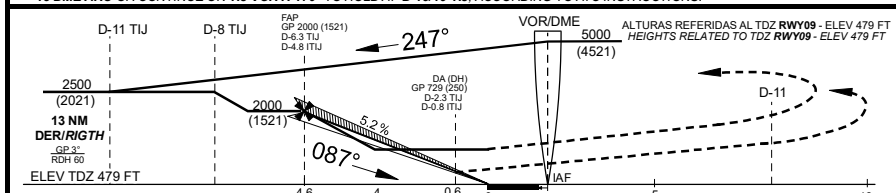
VAR 12°E

**TIJUANA**  
AEROPUERTO INTL / INTL AIRPORT  
GRAL. ABELARDO L. RODRIGUEZ  
**ILS/DME 1 RWY 09**  
**LOC RWY 09**



**APROXIMACION FRUSTRADA / MISSED APPROACH**

ASCIENDA DIRECTO A 800 FT, EFECTUE VIRAJE A LA DERECHA E INTERCEPTE EN ASCENSO EL RADIAL 170° DEL VOR/DME/TIJ HASTA D-11, VIRE A LA DERECHA Y PROSIGA EN ARCO 13 DME O MANTENGA RADIAL 170° HASTA PATRON DE ESPERA EN D-15/19 O DE ACUERDO A INSTRUCCIONES DEL ATC  
CLIMB DIRECT TO 800 FT, TURN RIGHT AND CLIMB TO INTERCEPT TIJ VOR R-170° OUTBOUND TO D-11 TIJ, TURN RIGHT AND JOIN THE 13 DME ARC OR CONTINUE ON TIJ VOR R-170° TO HOLD AT D-15/19 TIJ, ACCORDING TO ATC INSTRUCTIONS.



	A	B	C	D
<b>CAT I COMPLETO/FULL</b>	DA (DH) 729 (250) - 1/2 (800 M)			
<b>SIN SALS / SALS OUT</b>	DA (DH) 729 (250) - 3/4 (1200 M)			
<b>LOC COMPLETO/FULL</b>	MDA (MDH) 840 (361) - 3/4 (1200 M)			840 (361) - 1 (1600 M)
<b>LOC SIN SALS / SALS OUT</b>	MDA (MDH) 840 (361) - 1 (1600 M)			840 (361) - 1 1/4 (2000 M)
<b>CIRCLING</b>	MDA (MDH) 1180 (693) - 1 (1600 M)			
<b>CNL SECTOR AL "N" DE RWY 09/27</b>	MDA (MDH) 1180 (693) - 2 (3200 M)			1180 (693) - 2 1/4 (3600 M)

**GRADIENTE DE DESCENSO / RATE OF DESCENT**

FAP THR	VEL GS (KTS)	80	100	120	140	160	180	200
4.6 NM	FT/MIN	423	529	635	741	847	953	1059
5.2% (3.0°)	MIN:SEC	3:27	2:46	2:18	1:58	1:43	1:32	1:23

ALTITUD MINIMA SEGUN  
DISTANCIA DME/ITIJ /  
MINIMUM ALTITUDE ACCORDING  
TO DISTANCE DME/ITIJ

NM	4.75	4	3	2	1
FT	1980 (1501)	1750 (1271)	1430 (951)	1110 (631)	790 (311)