

CARTA DE APROXIMACION
POR INSTRUMENTOS
INSTRUMENT APPROACH
CHART (IAC)

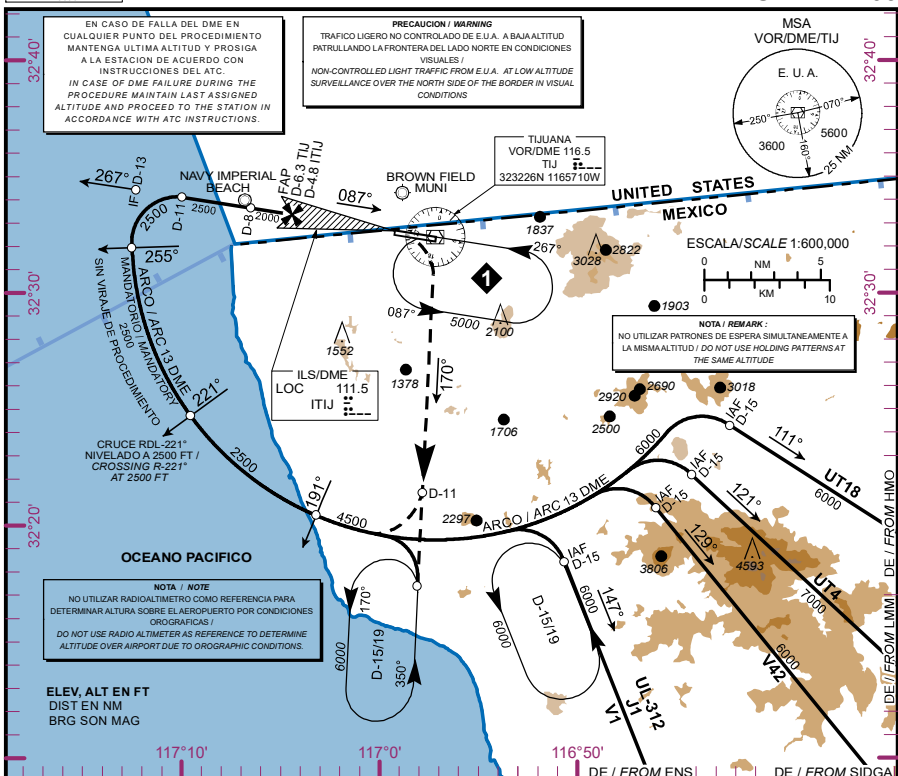
ALTITUD DE TRANSICION
TRANSITION ALTITUDE
18500

ATIS 127.9
TWR 118.1
APP 119.5 O 120.3
FIS 132.1
EMERG 121.5
CD 122.35

ELEV AD 487 FT

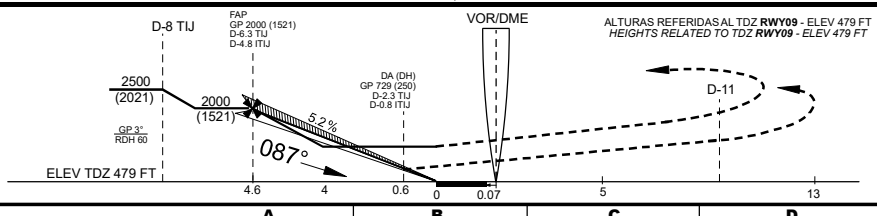
VAR 12°E

TIJUANA
AEROPUERTO INTL / INTL AIRPORT
GRAL. ABELARDO L. RODRIGUEZ
ILS/DME 2 RWY 09
LOC RWY 09



APROXIMACION FRUSTRADA / MISSED APPROACH

ASCIENDA DIRECTO A 800 FT, EFECTUE VIRAJE A LA DERECHA E INTERCEPTE EN ASCENSO EL RADIAL 170° DEL VOR/DME/TIJ HASTA D-11, VIRE A LA DERECHA Y PROSIGA EN ARCO 13 DME O MANTENGA RADIAL 170° HASTA PATRON DE ESPERA EN D-15/19 O DE ACUERDO A INSTRUCCIONES DEL ATC
CLIMB DIRECT TO 800 FT, TURN RIGHT AND CLIMBS TO INTERCEPT TIJ VOR R-170° OUTBOUND TO D-11 TJ, TURN RIGHT AND JOIN THE 13 DME ARC OR CONTINUE ON TIJ VOR R-170° TO HOLD AT D-15/19 TJ, ACCORDING TO ATC INSTRUCTIONS.



CAT I COMPLETO/FULL	DA (DH) 729 (250) - 1/2 (800 M)		
SIN SALS / SALS OUT	DA (DH) 729 (250) - 3/4 (1200 M)		
LOC COMPLETO/FULL	MDA (MDH) 840 (361) - 3/4 (1200 M)	840 (361) - 1 (1600 M)	
LOC SIN SALS / SALS OUT	MDA (MDH) 840 (361) - 1 (1600 M)	840 (361) - 1 1/4 (2000 M)	
CIRCLING	MDA (MDH) 1180 (693) - 1 (1600 M)	1180 (693) - 2 (3200 M)	1180 (693) - 2 1/4 (3600 M)
CNL SECTOR AL "N" DE RWY 09/27			

GRADIENTE DE DESCENSO / RATE OF DESCENT

FAP THR 4.6 NM 5.2% (3.0°)	VEL GS (KTS)	80	100	120	140	160	180	200
	FT/MIN	423	529	635	741	847	953	1059
	MIN:SEC	3:27	2:46	2:18	1:58	1:43	1:32	1:23

ALTITUD MINIMA SEGUN
DISTANCIA DME/ITJ /
MINIMUM ALTITUDE ACCORDING
TO DISTANCE DME/ITJ

NM	4.75	4	3	2	1
FT	1980 (1501)	1750 (1271)	1430 (951)	1110 (631)	790 (311)