

TA: 18500 FT

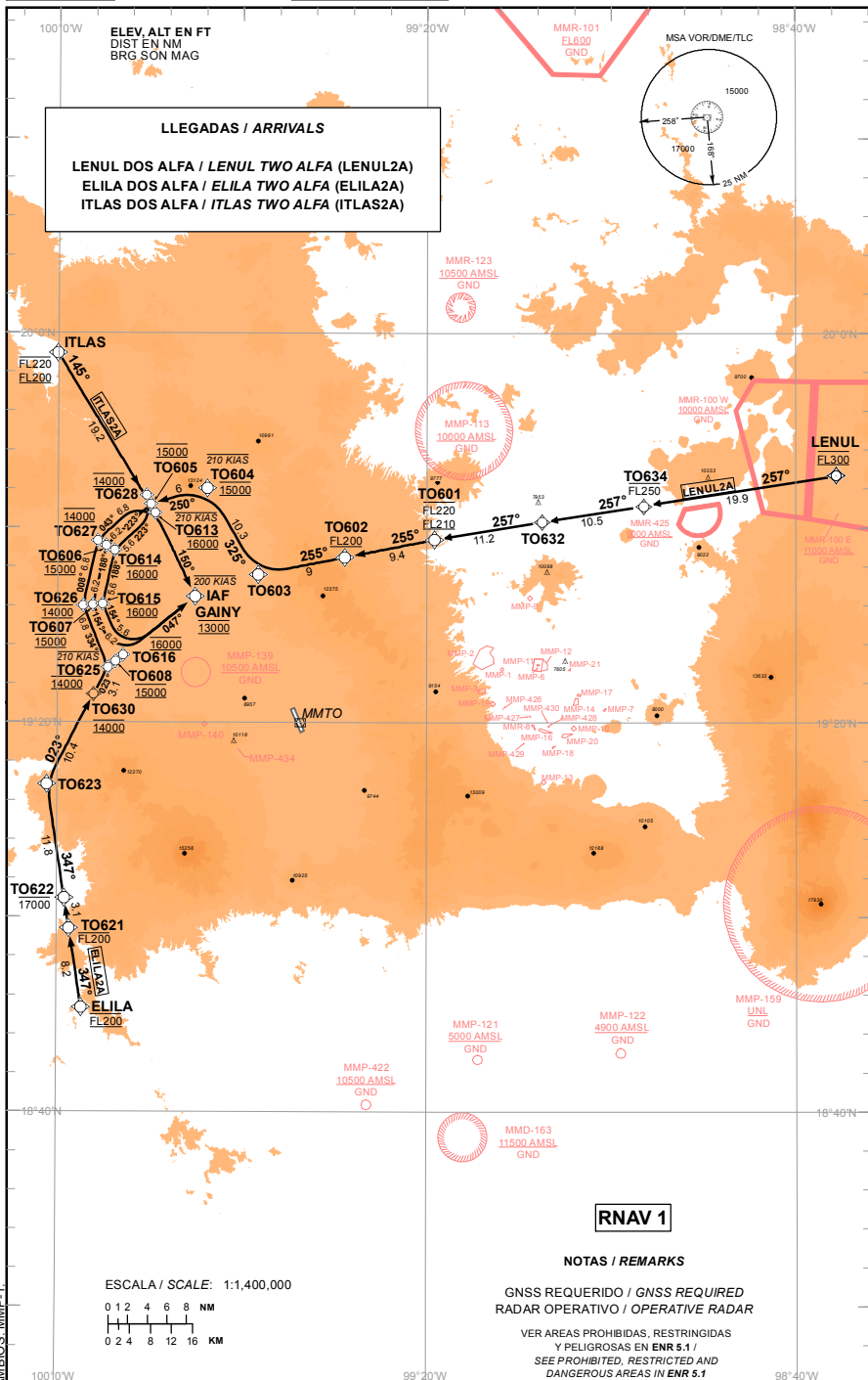
AD ELEV : 8466 FT
VAR 4° E

LIC. ADOLFO LOPEZ MATEOS INTL

RNAV RWY 15

TOLUCA

LENUL DOS ALFA / *LENUL TWO ALFA* (LENUL2A)
ELILA DOS ALFA / *ELILA TWO ALFA* (ELILA2A)
ITLAS DOS ALFA / *ITLAS TWO ALFA* (ITLAS2A)



CAMBIO: MMP-1.

13-JUL-2023 AMDT AIRAC 07/23

SCT - AFAC - SENEAM

MMTO-STAR-1

TABLA DE CODIFICACIÓN DEL PROCEDIMIENTO DE LLEGADA POR INSTRUMENTOS RNAV PISTA 15
 RUNWAY 15 RNAV INSTRUMENT ARRIVAL PROCEDURE CODING TABLE

LENUL 2A

| Número de serie / Serial Number | Descriptor de trayectoria / Path terminator | Identificador de punto de recorrido / Waypoint identifier | Sobrevuelo / Fly Over | Curso / derrota Course / Track *MAG (*T) | Variación Magnética / Magnetic variation (°) | Distancia / Distance (NM) | Dirección del Viraje / Turn direction | Altitud / Altitude (FT) | Velocidad / Velocity (KTS) | VPA (°) / TCH (FT) | Especificación de Navegación / Navigation Specification |
|---------------------------------|---|---|-----------------------|--|--|---------------------------|---------------------------------------|-------------------------|----------------------------|--------------------|---|
| 001 | IF | LENUL | - | - | - | - | - | @FL300 | - | - | RNAV 1 |
| 002 | TF | TO634 | - | 257 (261.0) | 4 | 19.9 | - | -FL250 | - | - | RNAV 1 |
| 003 | TF | TO632 | - | 257 (260.9) | 4 | 10.5 | - | - | - | - | RNAV 1 |
| 004 | TF | TO601 | - | 257 (260.9) | 4 | 11.2 | - | -FL220 ; +FL210 | - | - | RNAV 1 |
| 005 | TF | TO602 | - | 255 (258.8) | 4 | 9.4 | - | +FL200 | - | - | RNAV 1 |
| 006 | TF | TO603 | - | 255 (258.8) | 4 | 9 | - | - | - | - | RNAV 1 |
| 007 | TF | TO604 | - | 325 (329.5) | 4 | 10.3 | - | @15000 | -210 | - | RNAV 1 |
| 008 | TF | TO605 | - | 250 (254.3) | 4 | 6 | - | @15000 | - | - | RNAV 1 |
| 009 | TF | TO606 | - | 223 (227.0) | 4 | 6.2 | - | @15000 | - | - | RNAV 1 |
| 010 | TF | TO607 | - | 188 (192.5) | 4 | 6.2 | - | @15000 | - | - | RNAV 1 |
| 011 | TF | TO608 | - | 154 (158.0) | 4 | 6.2 | - | @15000 | - | - | RNAV 1 |
| 012 | TF | GAINY | - | 047 (050.7) | 4 | 10.5 | - | @13000 | -200 | - | RNAV 1 |

ELILA 2A

| Número de serie / Serial Number | Descriptor de trayectoria / Path terminator | Identificador de punto de recorrido / Waypoint identifier | Sobrevuelo / Fly Over | Curso / derrota Course / Track *MAG (*T) | Variación Magnética / Magnetic variation (°) | Distancia / Distance (NM) | Dirección del Viraje / Turn direction | Altitud / Altitude (FT) | Velocidad / Velocity (KTS) | VPA (°) / TCH (FT) | Especificación de Navegación / Navigation Specification |
|---------------------------------|---|---|-----------------------|--|--|---------------------------|---------------------------------------|-------------------------|----------------------------|--------------------|---|
| 001 | IF | ELILA | - | - | - | - | - | @FL200 | - | - | RNAV 1 |
| 002 | TF | TO621 | - | 347 (351.1) | 4 | 8.2 | - | -FL200 | - | - | RNAV 1 |
| 003 | TF | TO622 | - | 347 (351.1) | 4 | 3.1 | - | -17000 | - | - | RNAV 1 |
| 004 | TF | TO623 | - | 347 (351.1) | 4 | 11.8 | - | - | - | - | RNAV 1 |
| 005 | TF | TO630 | - | 023 (027.4) | 4 | 10.4 | - | @14000 | - | - | RNAV 1 |
| 006 | TF | TO625 | - | 023 (027.4) | 4 | 3.1 | - | @14000 | -210 | - | RNAV 1 |
| 007 | TF | TO626 | - | 334 (338.0) | 4 | 6.8 | - | @14000 | - | - | RNAV 1 |
| 008 | TF | TO627 | - | 008 (012.5) | 4 | 6.8 | - | @14000 | - | - | RNAV 1 |
| 009 | TF | TO628 | - | 043 (047.0) | 4 | 6.8 | - | @14000 | - | - | RNAV 1 |
| 010 | TF | GAINY | - | 150 (154.2) | 4 | 11.5 | - | @13000 | -200 | - | RNAV 1 |

ITLAS 2A

| Número de serie / Serial Number | Descriptor de trayectoria / Path terminator | Identificador de punto de recorrido / Waypoint identifier | Sobrevuelo / Fly Over | Curso / derrota Course / Track *MAG (*T) | Variación Magnética / Magnetic variation (°) | Distancia / Distance (NM) | Dirección del Viraje / Turn direction | Altitud / Altitude (FT) | Velocidad / Velocity (KTS) | VPA (°) / TCH (FT) | Especificación de Navegación / Navigation Specification |
|---------------------------------|---|---|-----------------------|--|--|---------------------------|---------------------------------------|-------------------------|----------------------------|--------------------|---|
| 001 | IF | ITLAS | - | - | - | - | - | -FL220 ; +FL200 | - | - | RNAV 1 |
| 002 | TF | TO613 | - | 145 (148.5) | 4 | 19.2 | - | @16000 | -210 | - | RNAV 1 |
| 003 | TF | TO614 | - | 223 (227.0) | 4 | 5.6 | - | @16000 | - | - | RNAV 1 |
| 004 | TF | TO615 | - | 188 (192.5) | 4 | 5.6 | - | @16000 | - | - | RNAV 1 |
| 005 | TF | TO616 | - | 154 (158.0) | 4 | 5.6 | - | @16000 | - | - | RNAV 1 |
| 006 | TF | GAINY | - | 047 (050.7) | 4 | 9.5 | - | @13000 | -200 | - | RNAV 1 |

COORDENADAS DE LOS PUNTOS DE RECORRIDO
WAYPOINT COORDINATES

| Punto de recorrido / Waypoint | Coordenadas / Coordinates | Punto de recorrido / Waypoint | Coordenadas / Coordinates |
|----------------------------------|------------------------------|----------------------------------|------------------------------|
| ELILA | 18°50'42.8"N | TO614 | 19°37'41.0"N |
| | 099°57'18.0"W | | 099°53'50.1"W |
| GAINY | 19°32'57.1"N | TO615 | 19°32'09.6"N |
| | 099°45'06.0"W | | 099°55'07.5"W |
| ITLAS | 19°57'56.5"N | TO616 | 19°26'55.1"N |
| | 100°00'04.1"W | | 099°52'53.3"W |
| LENUL | 19°45'22.9"N | TO621 | 18°58'50.3"N |
| | 098°35'36.8"W | | 099°58'38.5"W |
| TO601 | 19°38'47.1"N | TO622 | 19°01'57.1"N |
| | 099°19'10.5"W | | 099°59'09.3"W |
| TO602 | 19°36'57.8"N | TO623 | 19°13'38.3"N |
| | 099°28'53.9"W | | 100°01'05.4"W |
| TO603 | 19°35'11.7"N | TO625 | 19°25'38.8"N |
| | 099°38'16.7"W | | 099°54'31.6"W |
| TO604 | 19°44'04.6"N | TO626 | 19°31'59.6"N |
| | 099°43'48.5"W | | 099°57'14.1"W |
| TO605 | 19°42'26.7"N | TO627 | 19°38'40.8"N |
| | 099°49'55.9"W | | 099°55'40.4"W |
| TO606 | 19°38'10.9"N | TO628 | 19°43'21.0"N |
| | 099°54'45.3"W | | 099°50'23.4"W |
| TO607 | 19°32'04.6"N | TO630 | 19°22'53.2"N |
| | 099°56'10.8"W | | 099°56'02.3"W |
| TO608 | 19°26'17.0"N | TO632 | 19°40'34.6"N |
| | 099°53'42.5"W | | 099°07'28.4"W |
| TO613 | 19°41'32.4"N | TO634 | 19°42'14.8"N |
| | 099°49'28.3"W | | 098°56'28.4"W |