

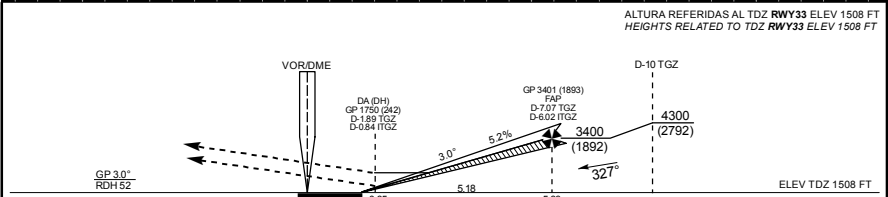
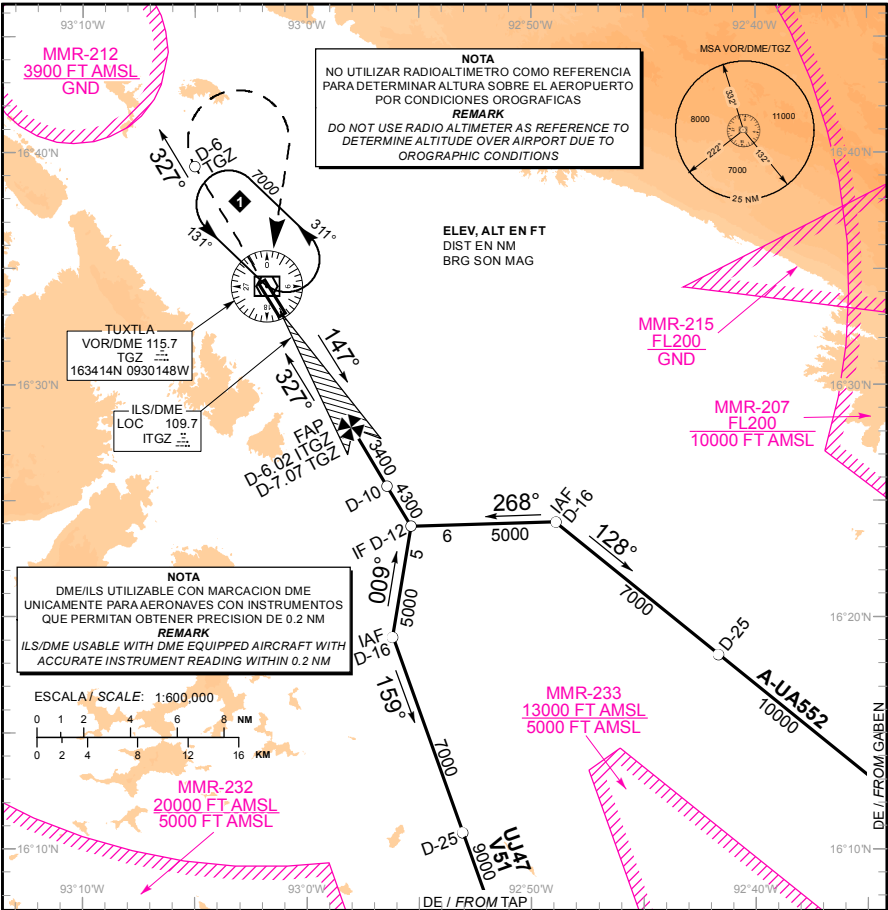
TWR / APP 118.6

ELEV AD 1508 FT

VAR 2° E

**TUXTLA GUTIERREZ**  
AEROPUERTO INTL / INTL AIRPORT  
ANGEL ALBINO CORZO  
**ILS/DME 2 RWY 33**  
**LOC RWY 33**

TA: 18500 FT



APROXIMACION FRUSTRADA / MISSED APPROACH			
ASCIENDA EN RADIAL 327° HASTA D-6, EFECTUE VIRAJE DE GOTAA LA DERECHA DENTRO DE 9 NM HACIA EL VOR/DME/TGZ HASTA LA ALTITUD MINIMA DE ESPERA.			
CLIMB VIA TGZ VOR R-327° TO D-6 TGZ, THEN TURN RIGHT WITHIN 9 NM TO VOR/DME/TGZ AT THE MINIMUM HOLDING ALTITUDE.			
CAT	A	B	C
CAT I COMPLETO/FULL	DA (DH) 1750 (242) - 3/4 ( 1200 M )		
LOC COMPLETO/FULL	MDA (MDH) 2100 (592) - 1 ( 1600 M )		2100 (592) - 2 (3200 M)
CIRCLING MDA (MDH) CNL SECTOR "W" RWY 14/32	MDA (MDH) 2180 (672) - 1 ( 1600 M )		2220 (712) - 2 1/4 (3600 M)

GRADIENTE DE DESCENSO / RATE OF DESCENT		80	100	120	140	160	180	200
FAP - THR	VEL GS (KTS)	421	526	631	736	842	947	1052
5.83 NM	FT / NM	4:22	3:30	2:55	2:30	2:11	1:57	1:45
5.2% (3.0°)	MIN : SEC							

ALTITUD MINIMA SEGUN DISTANCIA DME/ITGZ / MINIMUM ALTITUDE ACCORDING TO DISTANCE DME/ITGZ

NM	6.02	5	4	3	2	1
FT	3400 (1892)	3080 (1572)	2760 (1252)	2450 (942)	2130 (622)	1820 (312)