

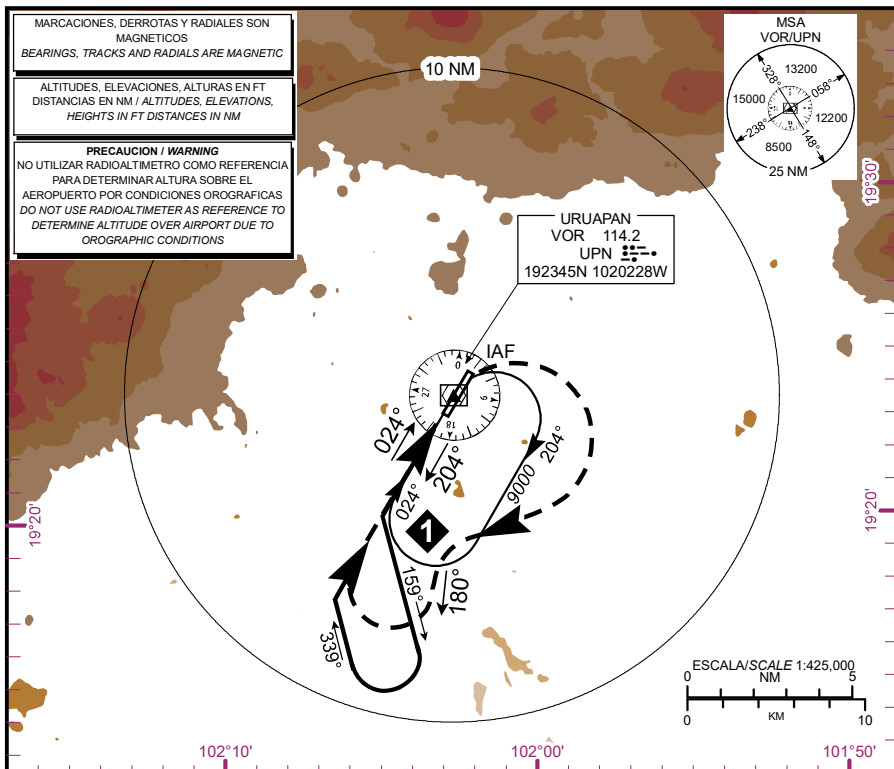
CARTA DE APROXIMACION  
POR INSTRUMENTOS  
INSTRUMENT  
APPROACH CHART  
(IAC)

TWR 118.2  
APP 126.2

ELEV AD 5258 FT  
VAR 7° E

ALTITUD DE TRANSICION  
TRANSITION ALTITUDE  
18500

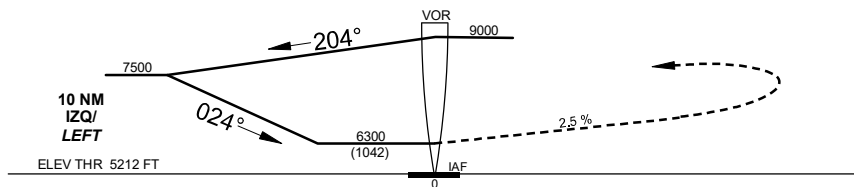
**URUAPAN**  
AEROPUERTO NTL / NTL AIRPORT  
LIC. Y GRAL. IGNACIO  
LOPEZ RAYON  
**VOR A**



#### APROXIMACION FRUSTRADA / MISSED APPROACH

EFFECTUE VIRAJE A LA DERECHA E INTERCEPTE EN ASCENSO EL RADIAL 180°, VIRE A LA DERECHA DENTRO DE 10 NM Y PROSIGA EN TRAYECTORIA DE APROXIMACION HACIA EL VOR/UPN HASTA LA ALTITUD MINIMA DE ESPERA.

TURN RIGHT TO INTERCEPT CLIMBING UPN R-180°, TURN RIGHT WITHIN 10 NM AND PROCEED IN FINAL TRACK TO VOR/UPN AT THE MINIMUM HOLDING ALTITUDE.



| CAT                | A                           | B                           | C                       | D |
|--------------------|-----------------------------|-----------------------------|-------------------------|---|
| DIRECT             |                             |                             |                         |   |
| CIRCLING MDA (MDH) | 6300 (1042) -1 1/4 (2000 M) | 6300 (1042) -1 1/2 (2400 M) | 6300 (1042) -3 (4800 M) |   |

#### APROXIMACION FRUSTRADA / MISSED APPROACH

DISTANCIA MAXIMA DE ALEJAMIENTO 16 NM DESDE MAPt  
MAXIMUM DISTANCE TO TURN 16 NM FROM MAPt

| VEL GS (KTS) | 80    | 100   | 120  | 140  | 160  | 180  | 200  |
|--------------|-------|-------|------|------|------|------|------|
| MIN:SEC      | 16:00 | 12:00 | 9:36 | 8:00 | 6:51 | 6:00 | 5:20 |

CAMBIO / CHANGES: FREQ APP