

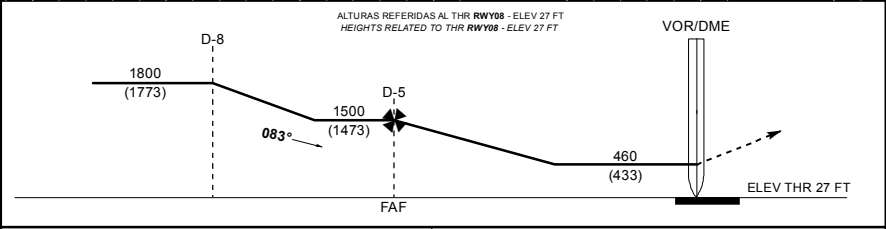
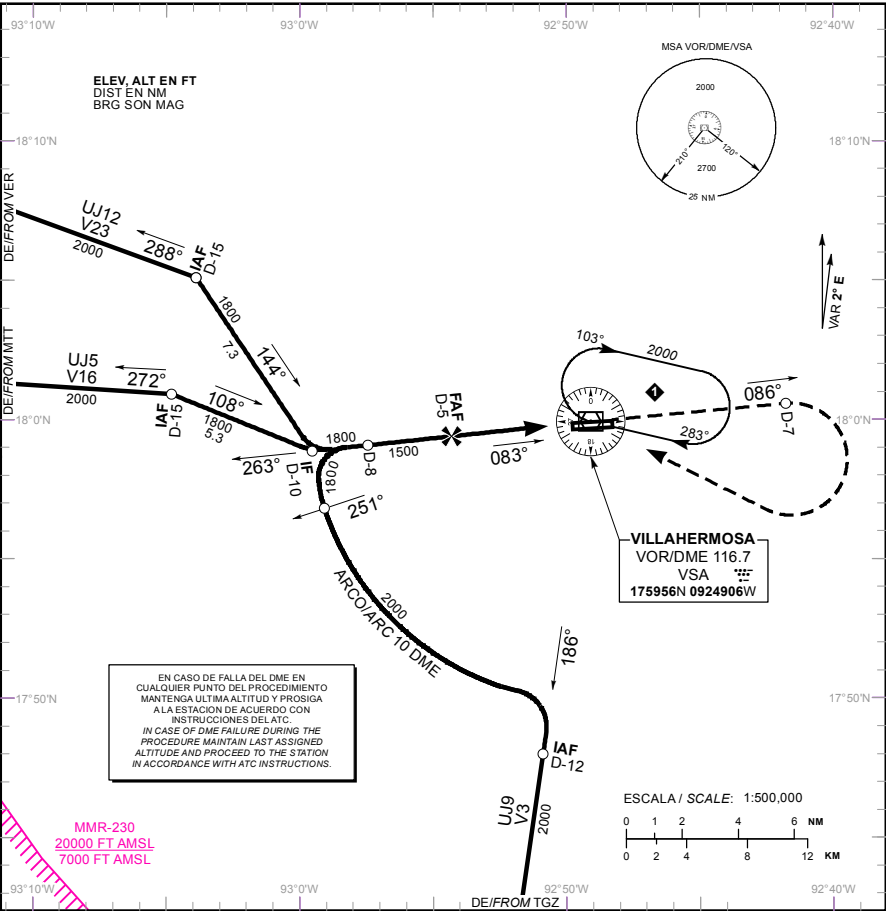
CARTA DE APROXIMACION
POR INSTRUMENTOS
INSTRUMENT APPROACH
CHART (IAC)

TWR 118.7
APP 120.9

AD ELEV : 46 FT
VAR 2° E

VILLAHERMOSA
AEROPUERTO INTL / INTL AIRPORT
CAP. P.A. CARLOS ROVIROSA
VOR/DME 2 RWY 08

TA: 18500 FT



APROXIMACION FRUSTRADA / MISSED APPROACH		GRADIENTE DE DESCENSO / RATE OF DESCENT							
4.45 NM	FAP - THR	VEL GS (KTS)	80	100	120	140	160	180	200
	FT / NM	426	533	640	746	853	959	1066	
	5.3%	MIN : SEC	3:45	3:00	2:30	2:09	1:52	1:40	1:30
ALTITUD MINIMA SEGUN DISTANCIA / MINIMUM ALTITUDE ACCORDING TO DISTANCE									
		NM	4	3	2				
		FT	1180 (1153)	860 (833)	540 (513)				

CAT	A	B	C	D
-				
DIRECTO/DIRECT MDA (MDH)	460 (433) - 1 (1600 M)		460 (433) - 1 1/4 (2000 M)	460 (433) - 1 1/2 (2400 M)
CIRCULANDO CIRCLING MDA (MDH)	500 (454) - 1 (1600 M)		500 (454) - 1 1/2 (2400 M)	600 (554) - 2 (3200 M)

CAMBIO: CNL: VOR/DME/CMT: ARR CMT.