

CARTA DE APROXIMACION
POR INSTRUMENTOS
INSTRUMENT APPROACH
CHART (IAC)

TA: 18500 FT

ATIS	127.7
APP	124.7
ARR CUN	123.2
TWR CUN	118.6 ó 118.1
DEP SUR	123.5
DEP NORTE	124.2
SMC	121.7
AUX (TWR/APP)	120.4
APP (TNA)	122.7
ATIS C2W	127.8

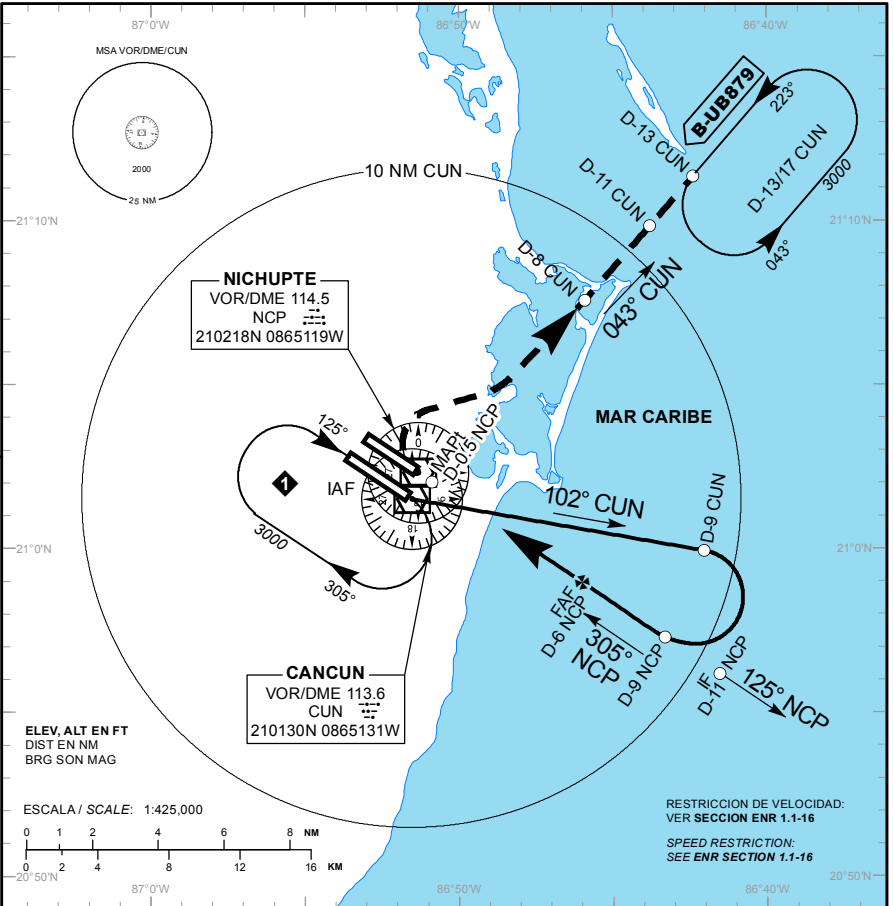
ELEV AD 22 FT

VAR 2° W

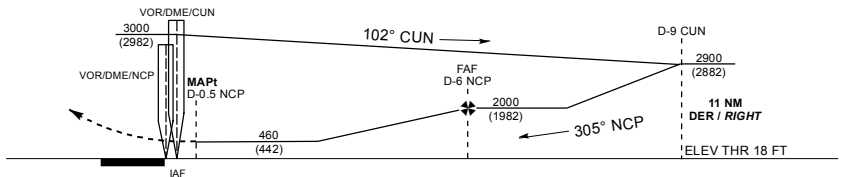
CANCUN

AEROPUERTO INTL / INTL AIRPORT

VOR/DME 1 RWY 30R



ALTURAS REFERIDAS AL THR RWY 30R ELEV 18 FT
HEIGHTS RELATED TO THR RWY 30R ELEV 18 FT



APROXIMACION FRUSTRADA / MISSED APPROACH

EFFECTUE VIRAJE A LA DERECHA, CONTINUE EN RADIAL 043° CUN (MANTENGA 2000 FT HASTA D-8 CUN), PROSIGA EN ASCENSO HASTA EL PATRON DE ESPERA D-13/17 CUN, HASTA ALCANZAR 3000 FT Y MANTENGA DE ACUERDO A INSTRUCCIONES DEL ATC.

TURN RIGHT ON CUN VOR R-043° OUTBOUND (MAINTAIN 2000 FT UNTIL D-8 CUN) CONTINUE CLIMBING TO 3000 FT AND HOLD AT D-13/17 CUN THEN AS INSTRUCTED BY ATC.

GRADIENTE DE DESCENSO / RATE OF DESCENT

FAF - THR	VEL GS (KTS)	80	100	120	140	160	180	200
6.24 NM	FT / NM	413	516	619	722	826	929	1032
5.1% (2.9°)	MIN : SEC	4:08	3:18	2:45	2:21	2:04	1:50	1:39

ALTITUD MINIMA SEGUN DISTANCIA DME/CUN / MINIMUM ALTITUDE ACCORDING TO DISTANCE DME/CUN

NM	6	5	4	3	2
FT	2000 (1982)	1690 (1672)	1380 (1362)	1070 (1052)	760 (742)

CAT	A	B	C	D
-	-	-	-	-
DIRECTO/DIRECT MDA (MDH)	460 (442) - 1 (1600 M)	-	460 (442) - 1 1/4 (2000 M)	460 (442) - 1 1/2 (2400 M)
CIRCLING MDA (MDH) CNL SECTOR 35° RWY 12L/30R	480 (458) - 1 (1600 M)	-	580 (558) - 1 1/2 (2400 M)	580 (558) - 2 (3200 M)