

CARTA DE APROXIMACION
POR INSTRUMENTOS
INSTRUMENT APPROACH
CHART (IAC)

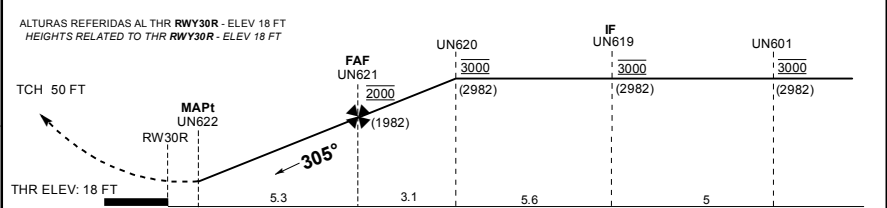
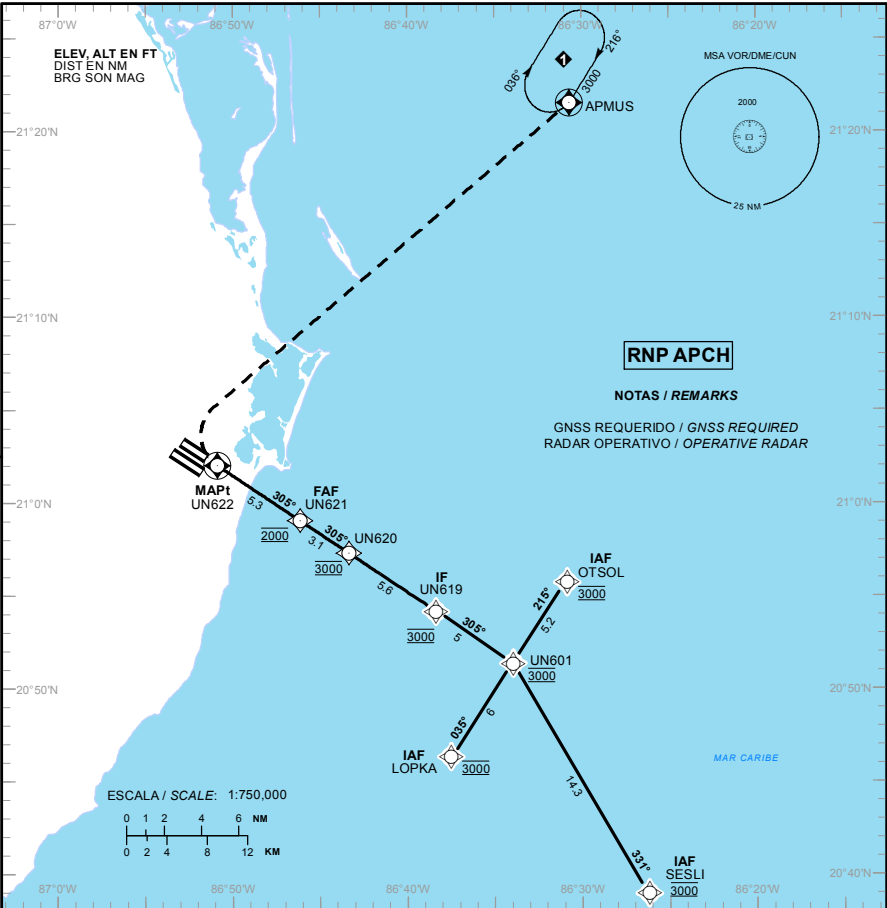
TA: 18500 FT

| | |
|---------------|---------------|
| MMUN ATIS | 127.7 |
| APP | 124.7 |
| APP (FNA) | 122.7 |
| ARR | 123.2 |
| TWR | 118.6 ó 118.1 |
| AUX (TWR/APP) | 120.4 |
| MMCZ ATIS | 127.8 |

AD ELEV : 22 FT
VAR 2° W

CANCUN
AEROPUERTO INTL / INTL AIRPORT

RNP RWY 30R



APROXIMACION FRUSTRADA / MISSED APPROACH

VIRE A LA DERECHA Y CONTINUE EN ASCENSO EN APROXIMACION FRUSTRADA HASTA 3000 FT EN APMUS Y CONTINUE EN PATRON DE ESPERA.

TURN RIGHT AND CONTINUE CLIMBING ON THE MISSED APPROACH TO HOLDING PATTERN ON APMUS AT 3000 FT.

| FAF-MAPt | | GRADIENTE DE DESCENSO / RATE OF DESCENT | | | | | | | |
|----------|--|---|------|------|------|------|------|------|------|
| | | VEL GS (KTS) | 80 | 100 | 120 | 140 | 160 | 180 | 200 |
| 5.3 NM | | FT / NM | 425 | 531 | 637 | 743 | 849 | 955 | 1061 |
| 3.0° | | MIN : SEC | 3:59 | 3:11 | 2:39 | 2:16 | 1:59 | 1:46 | 1:35 |

ALTITUD MINIMA SEGUN DISTANCIA / MINIMUM ALTITUDE ACCORDING TO DISTANCE

| NM | 5 | 4 | 3 | 2 |
|----|----------------|----------------|----------------|--------------|
| FT | 1660 (1642) | 1340 (1322) | 1020 (1002) | 700 (682) |

| CAT | A | B | C | D |
|--|--------------------------|---|----------------------------|----------------------------|
| LNAV SALS / FULL MDA (MDH) | 460 (442) - 3/4 (1200 M) | | 460 (442) - 1 (1600 M) | 460 (442) - 1 1/4 (2000 M) |
| LNAV SIN SALS/SALS OUT MDA (MDH) | 460 (442) - 1 (1600 M) | | 460 (442) - 1 1/4 (2000 M) | 460 (442) - 1 1/2 (2400 M) |
| CIRCLING MDA (MDH) CNL SECTOR "S" RWY 12L/30R | 480 (458) - 1 (1600 M) | | 580 (558) - 1 1/2 (2400 M) | 580 (558) - 2 (3200 M) |

TABLA DE CODIFICACIÓN DEL PROCEDIMIENTO DE APROXIMACIÓN POR INSTRUMENTOS RNP PISTA 30R
RUNWAY 30R RNP INSTRUMENT APPROACH PROCEDURE CODING TABLE

IAF OTSOL

| Número de serie / Serial Number | Descriptor de trayectoria / Path terminator | Identificador de punto de recorrido / Waypoint Identifier | Sobrevuelo / Fly Over | Curso / derrota Course / Track °MAG (°T) | Variación Magnética / Magnetic variation (°) | Distancia / Distance (NM) | Dirección del Viraje / Turn direction | Altitud / Altitude (FT) | Velocidad / Velocity (KTS) | VPA (°) / TCH (FT) | Especificación de Navegación / Navigation Specification |
|---------------------------------|---|---|-----------------------|--|--|---------------------------|---------------------------------------|-------------------------|----------------------------|--------------------|---|
| 001 | IF | OTSOL | - | - | +2 | - | - | @ 3000 | - | - | RNAV 1 |
| 002 | TF | UN601 | - | 215 (213.7) | +2 | 5.2 | - | @ 3000 | - | - | RNAV 1 |
| 003 | TF | UN619 | - | 305 (303.7) | +2 | 5 | - | @ 3000 | - | - | RNAV 1 |
| 004 | TF | UN620 | - | 305 (303.7) | +2 | 5.6 | - | @ 3000 | - | - | RNAV 1 |
| 005 | TF | UN621 | - | 305 (303.7) | +2 | 3.1 | - | @ 2000 | - | - | RNAV 1 |
| 006 | TF | UN622 | Y | 305 (303.7) | +2 | 5.3 | - | - | - | - | RNP APCH |
| 007 | DF | APMUS | Y | - | +2 | - | - | 3000 | - | - | RNAV 1 |

IAF SESLI

| Número de serie / Serial Number | Descriptor de trayectoria / Path terminator | Identificador de punto de recorrido / Waypoint Identifier | Sobrevuelo / Fly Over | Curso / derrota Course / Track °MAG (°T) | Variación Magnética / Magnetic variation (°) | Distancia / Distance (NM) | Dirección del Viraje / Turn direction | Altitud / Altitude (FT) | Velocidad / Velocity (KTS) | VPA (°) / TCH (FT) | Especificación de Navegación / Navigation Specification |
|---------------------------------|---|---|-----------------------|--|--|---------------------------|---------------------------------------|-------------------------|----------------------------|--------------------|---|
| 001 | IF | SESLI | - | - | +2 | - | - | @ 3000 | - | - | RNAV 1 |
| 002 | TF | UN601 | - | 331 (329.5) | +2 | 14.3 | - | @ 3000 | - | - | RNAV 1 |
| 003 | TF | UN619 | - | 305 (303.7) | +2 | 5 | - | @ 3000 | - | - | RNAV 1 |
| 004 | TF | UN620 | - | 305 (303.7) | +2 | 5.6 | - | @ 3000 | - | - | RNAV 1 |
| 005 | TF | UN621 | - | 305 (303.7) | +2 | 3.1 | - | @ 2000 | - | - | RNAV 1 |
| 006 | TF | UN622 | Y | 305 (303.7) | +2 | 5.3 | - | - | - | - | RNP APCH |
| 007 | DF | APMUS | Y | - | +2 | - | - | 3000 | - | - | RNAV 1 |

IAF LOPKA

| Número de serie / Serial Number | Descriptor de trayectoria / Path terminator | Identificador de punto de recorrido / Waypoint Identifier | Sobrevuelo / Fly Over | Curso / derrota Course / Track °MAG (°T) | Variación Magnética / Magnetic variation (°) | Distancia / Distance (NM) | Dirección del Viraje / Turn direction | Altitud / Altitude (FT) | Velocidad / Velocity (KTS) | VPA (°) / TCH (FT) | Especificación de Navegación / Navigation Specification |
|---------------------------------|---|---|-----------------------|--|--|---------------------------|---------------------------------------|-------------------------|----------------------------|--------------------|---|
| 001 | IF | LOPKA | - | - | +2 | - | - | @ 3000 | - | - | RNAV 1 |
| 002 | TF | UN601 | - | 035 (033.7) | +2 | 6 | - | @ 3000 | - | - | RNAV 1 |
| 003 | TF | UN619 | - | 305 (303.7) | +2 | 5 | - | @ 3000 | - | - | RNAV 1 |
| 004 | TF | UN620 | - | 305 (303.7) | +2 | 5.6 | - | @ 3000 | - | - | RNAV 1 |
| 005 | TF | UN621 | - | 305 (303.7) | +2 | 3.1 | - | @ 2000 | - | - | RNAV 1 |
| 006 | TF | UN622 | Y | 305 (303.7) | +2 | 5.3 | - | - | - | - | RNP APCH |
| 007 | DF | APMUS | Y | - | +2 | - | - | 3000 | - | - | RNAV 1 |

CODIFICACIÓN DE LAS ESPERAS
CODING TABLE FOR HOLDINGS

| Descriptor de trayectoria / Path terminator | Identificador de punto de recorrido / Waypoint Identifier | Rumbo de acercamiento / Approach heading °M (°T) | Tiempo / Time | Dirección del viraje / Turn direction | Altitud mínima / Minimum altitude (FT) | Altitud máxima / Maximum altitude (FT) | Límite de Velocidad / Speed Limit (KT) | Declinación magnética / Magnetic declination (°) | Especificación de Navegación / Navigation specification |
|---|---|--|-------------------|---------------------------------------|--|--|--|--|---|
| Espera / Holding | APMUS | 216 (213.8) | 1 Minuto / Minute | Derecha / Right | 3000 | - | -230 | +2 | RNAV 1 |

COORDENADAS DE LOS PUNTOS DE RECORRIDO
WAYPOINT COORDINATES

| Punto de recorrido / Waypoint | Coordenadas / Coordinates | Punto de recorrido / Waypoint | Coordenadas / Coordinates |
|----------------------------------|-------------------------------|----------------------------------|---------------------------------|
| OTSOL | 20°55'45.4"N 086°30'52.0"W | UN620 | 20°57'18.8"N 086°43'21.2"W |
| APMUS | 21°21'32.0"N 086°30'40.8"W | UN621 | 20°59'03.8"N 086°46'08.6"W |
| UN601 | 20°51'24.8"N 086°33'57.7"W | UN622 | 21°02'01.7"N 086°50'52.6"W |
| UN619 | 20°54'12.3"N 086°38'24.0"W | SESLI | 20°39'01.3"N 086°26'12.4"W |
| LOPKA | 20°46'23.6"N 086°37'32.1"W | RW30R | 21°02'26.52"N 086°51'32.26"W |