

TA: 18500 FT

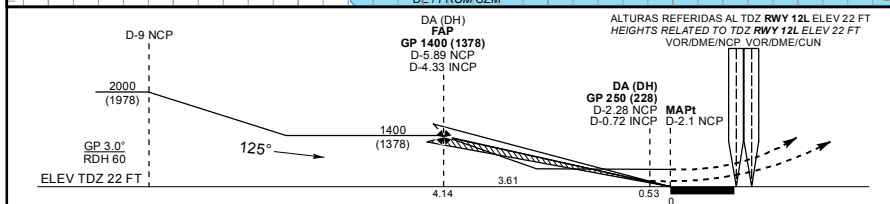
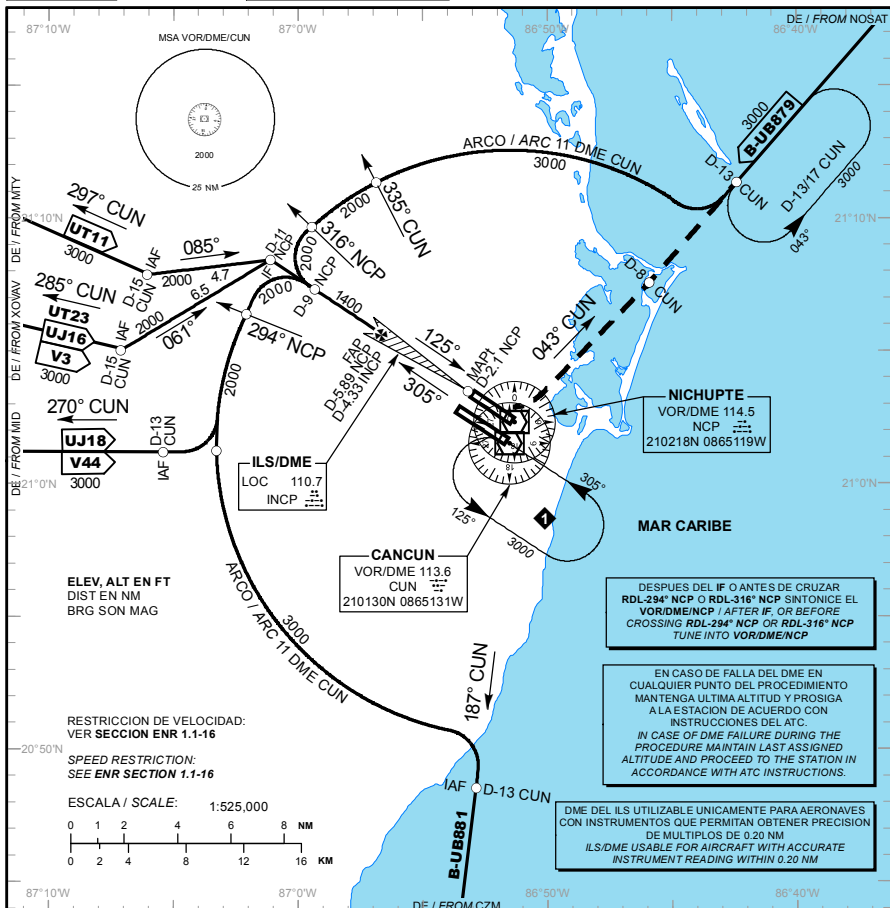
ATIS	127.7
APP	124.7
ARR CUN	123.2
TWR CUN	118.6 6 118.1
DEP SUR	123.5
DEP NORTE	124.2
SMC	121.7
AUX (TWR/APP)	120.4
APP (FNA)	122.7
ATIS CZM	127.8

ELEV AD 22 FT

VAR 2° W

ILS/DME 2 RWY 12L

LOC RWY 12L



EFFECTUE VIRAJE A LA **IZQUIERDA**, CONTINUE EN **RADIAL 043° CUN**
(MANTENGA **2000 FT** HASTA **D-8 CUN**), PROSIGA EN ASCENSO
HASTA EL PATRON DE ESPERA **D-13/17 CUN**, HASTA ALCANZAR
3000 FT Y MANTENGA DE ACUERDO A INSTRUCCIONES DEL ATC.

TURN LEFT ON CUN VOR R-043° OUTBOUND (MAINTAIN 2000 FT UNTIL D-8 CUN) CONTINUE CLIMBING TO 3000 FT AND HOLD AT D-13/17 CUN THEN AS INSTRUCTED BY ATC.

FAP - THR	VEL GS (KTS)	80	100	120	140	160	180	200
4.14 NM	FT / NM	424	531	637	743	849	955	1061
5.0% (3.0%)	MIN - SEC	3:06	3:20	3:34	3:46	3:59	4:12	4:25

ALTITUD MINIMA SEGUN DISTANCIA DME/INCP /
MINIMUM ALTITUDE ACCORDING TO DISTANCE DME/INCP

NM	4	3	2	1
FT	1290 (1268)	980 (958)	660 (638)	340 (318)

CAT	A	B	C	D
CAT I COMPLETO/FULL		DA (DH) 250 (228) - 1/2 (800 M)		
SIN ALS/ALS OUT		DA (DH) 250 (228) - 3/4 (1200 M)		
LOC COMPLETO/FULL	MDA (MDH) 460 (438) - 3/4 (1200 M)		460 (438) - 1 (1600 M)	460 (438) - 1 1/4 (2000 M)
LOC SIN ALS/ALS OUT	MDA (MDH) 460 (438) - 1 (1600 M)		460 (438) - 1 1/4 (2000 M)	460 (438) - 1 1/2 (2400 M)
CIRCUHANDO CIRCLING CIRCUITIZING CIRCLING	MDA (MDH) 480 (458) - 1 (1600 M)		580 (558) - 1 1/2 (2400 M)	580 (558) - 2 (3200 M)

08-SEP-2022 AMDT AIRAC 09/22

SCT - AFAC - SENEAM

MMUN-IAC-2

CAMBIOS: SIMBOLOGIA