

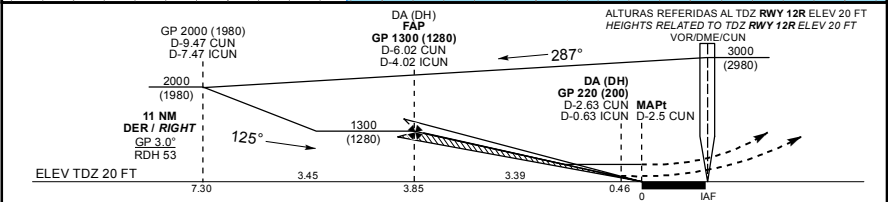
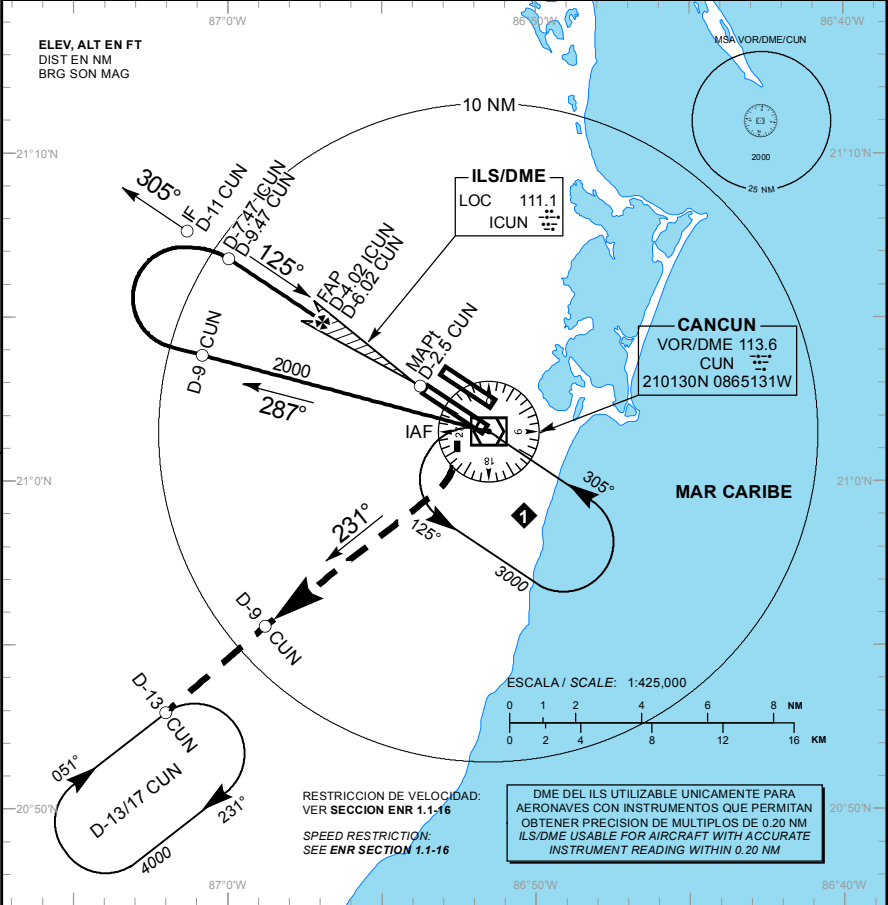
CARTA DE APROXIMACION
POR INSTRUMENTOS
INSTRUMENT APPROACH
CHART (IAC)

TA: 18500 FT

| | |
|---------------|---------------|
| ATIS | 127.7 |
| APP | 124.7 |
| ARR CUN | 123.2 |
| TWR CUN | 118.6 ó 118.1 |
| DEP SUR | 123.5 |
| DEP NORTE | 124.2 |
| SMC | 121.7 |
| AUX (TWR/APP) | 120.4 |
| APP (RNA) | 122.7 |
| ATIS C2W | 127.8 |

ELEV AD 22 FT
VAR 2° W

CANCUN
AEROPUERTO INTL / INTL AIRPORT
ILS/DME 1 RWY 12R
LOC RWY 12R



| APROXIMACION FRUSTRADA / MISSED APPROACH | | GRADIENTE DE DESCENSO / RATE OF DESCENT | | | | | | | | |
|--|--|---|--------------|-----------|-----------|-----------|------|------|------|------|
| EFECTUE VIRAJE A LA DERECHA, CONTINUE EN RADIAL 231° CUN (MANTENGA 2000 FT HASTA D-9 CUN), PROSIGA EN ASCENSO HASTA EL PATRON DE ESPERA D-13/17 CUN, HASTA ALCANZAR 4000 FT Y MANTENGA DE ACUERDO A INSTRUCCIONES DEL ATC. TURN RIGHT ON CUN VOR R-231° OUTBOUND (MAINTAIN 2000 FT UNTIL D-9 CUN) CONTINUE CLIMBING TO 4000 FT AND HOLD AT D-13/17 CUN THEN AS INSTRUCTED BY ATC. | | FAP - THR | VEL GS (KTS) | 80 | 100 | 120 | 140 | 160 | 180 | 200 |
| | | 3.85 NM | FT / NM | 425 | 531 | 637 | 744 | 850 | 956 | 1062 |
| | | 5.2% (3.0°) | MIN : SEC | 2:53 | 2:19 | 1:56 | 1:39 | 1:27 | 1:17 | 1:09 |
| ALTITUD MINIMA SEGUN DISTANCIA DME/CUN / MINIMUM ALTITUDE ACCORDING TO DISTANCE DME/CUN | | NM | 4.02 | 3 | 2 | 1 | | | | |
| | | FT | 1300 (1280) | 970 (950) | 660 (640) | 340 (320) | | | | |

| CAT | A | B | C | D |
|--|--|--------------------------------|---|--------------------------------|
| CAT I COMPLETO/FULL | DA (DH) 220 (200) - 1/2 (800 M) | | | |
| SIN ALS/ALS OUT | DA (DH) 220 (200) - 3/4 (1200 M) | | | |
| LOC COMPLETO/FULL | MDA (MDH) 460 (440) - 3/4 (1200 M) | 460 (440) - 1 (1600 M) | | 460 (440) - 1 1/4 (2000 M) |
| LOC SIN ALS/ALS OUT | MDA (MDH) 460 (440) - 1 (1600 M) | 460 (440) - 1 1/4 (2000 M) | | 460 (440) - 1 1/2 (2400 M) |
| CIRCULANDO CIRCLING CNL SEC "N" RWY 12R/30L | MDA (MDH) 480 (458) - 1 (1600 M) | 580 (558) - 1 1/2 (2400 M) | | 580 (558) - 2 (3200 M) |