

CARTA DE APROXIMACION
POR INSTRUMENTOS
INSTRUMENT APPROACH
CHART (IAC)

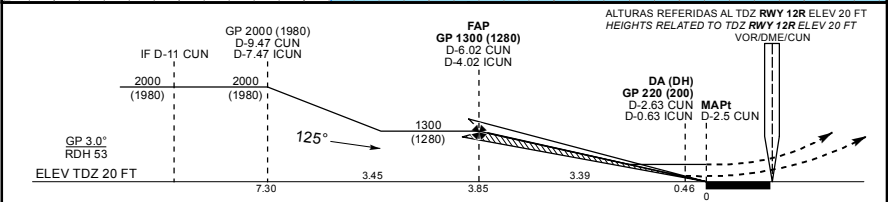
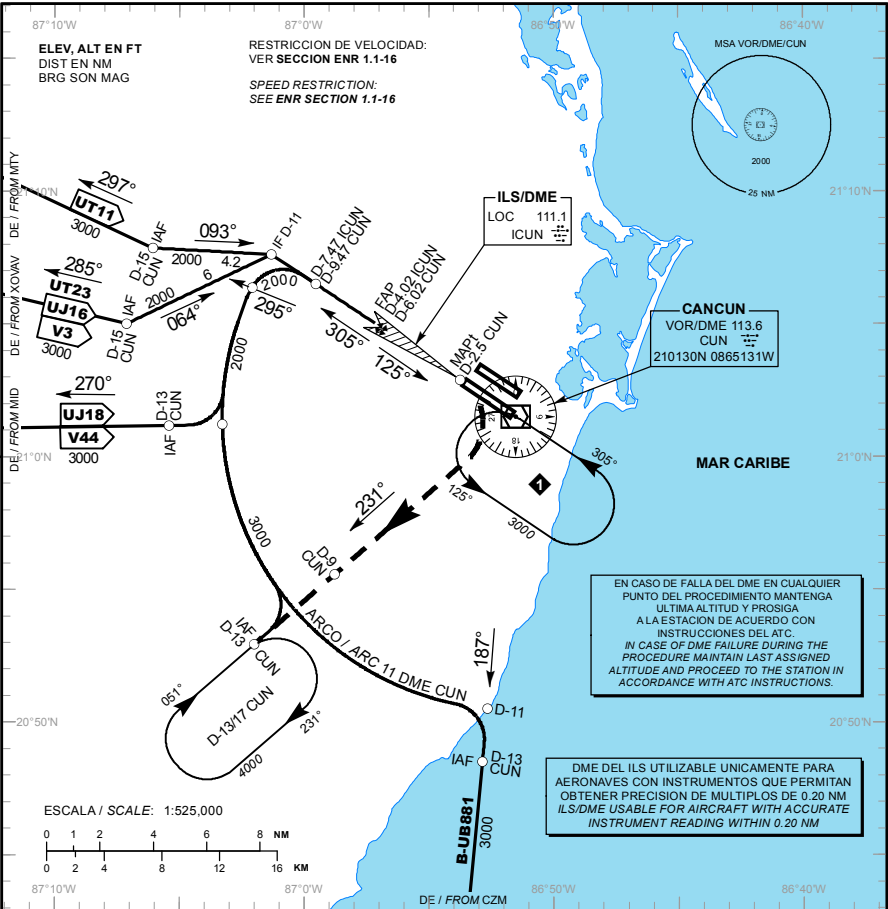
TA: 18500 FT

ATIS	127.7
APP	124.7
ARR CUN	123.2
TWR CUN	118.6 ó 118.1
DEP SUR	123.5
DEP NORTE	124.2
SMC	121.7
AUX (TWR/APP)	120.4
APP (FNA)	122.7
ATIS C2W	127.8

ELEV AD 22 FT

VAR 2° W

CANCUN
AEROPUERTO INTL / INTL AIRPORT
ILS/DME 2 RWY 12R
LOC RWY 12R



APROXIMACION FRUSTRADA / MISSED APPROACH

EFFECTUE VIRAJE A LA DERECHA, CONTINUE EN RADIAL 231° CUN (MANTENGA 2000 FT HASTA D-9 CUN), PROSIGA EN ASCENSO HASTA EL PATRON DE ESPERA D-13/17 CUN, HASTA ALCANZAR 4000 FT Y MANTENGA DE ACUERDO A INSTRUCCIONES DEL ATC.

TURN RIGHT ON CUN VOR R-231° OUTBOUND (MAINTAIN 2000 FT UNTIL D-9 CUN) CONTINUE CLIMBING TO 4000 FT AND HOLD AT D-13/17 CUN THEN AS INSTRUCTED BY ATC.

GRADIENTE DE DESCENSO / RATE OF DESCENT									
FAP - THR	VEL GS (KTS)	80	100	120	140	160	180	200	
3.85 NM	FT / NM	425	531	637	744	850	956	1062	
5.2% (3.0°)	MIN : SEC	2:53	2:19	1:56	1:39	1:27	1:17	1:09	

ALTITUD MINIMA SEGUN DISTANCIA DME/CUN / MINIMUM ALTITUDE ACCORDING TO DISTANCE DME/CUN

NM	4.02	3	2	1
FT	1300 (1280)	970 (950)	660 (640)	340 (320)

CAT	A	B	C	D
CAT I COMPLETO/FULL	DA (DH) 220 (200) - 1/2 (800 M)			
SIN ALS/ALS OUT	DA (DH) 220 (200) - 3/4 (1200 M)			
LOC COMPLETO/FULL	MDA (MDH) 460 (440) - 3/4 (1200 M)	460 (440) - 1 (1600 M)	460 (440) - 1 1/4 (2000 M)	460 (440) - 1 1/2 (2400 M)
LOC SIN ALS/ALS OUT	MDA (MDH) 460 (440) - 1 (1600 M)	460 (440) - 1 1/4 (2000 M)	460 (440) - 1 1/2 (2400 M)	460 (440) - 2 (3200 M)
CIRCULANDO CIRCLING CUNL SEC "N" RWY 12R/30L	MDA (MDH) 480 (458) - 1 (1600 M)	580 (558) - 1 1/2 (2400 M)	580 (558) - 2 (3200 M)	