

TA: 18500 FT

ATIS	127.7
APP	124.7
ARR CUN	123.2
TWR CUN	118.6 ó 118.1
DEP SUR	123.5
DEP NORTE	124.2
SMC	121.7
AUX (TWR/APP)	120.4
APP (FNA)	122.7
ATIS CZM	127.8

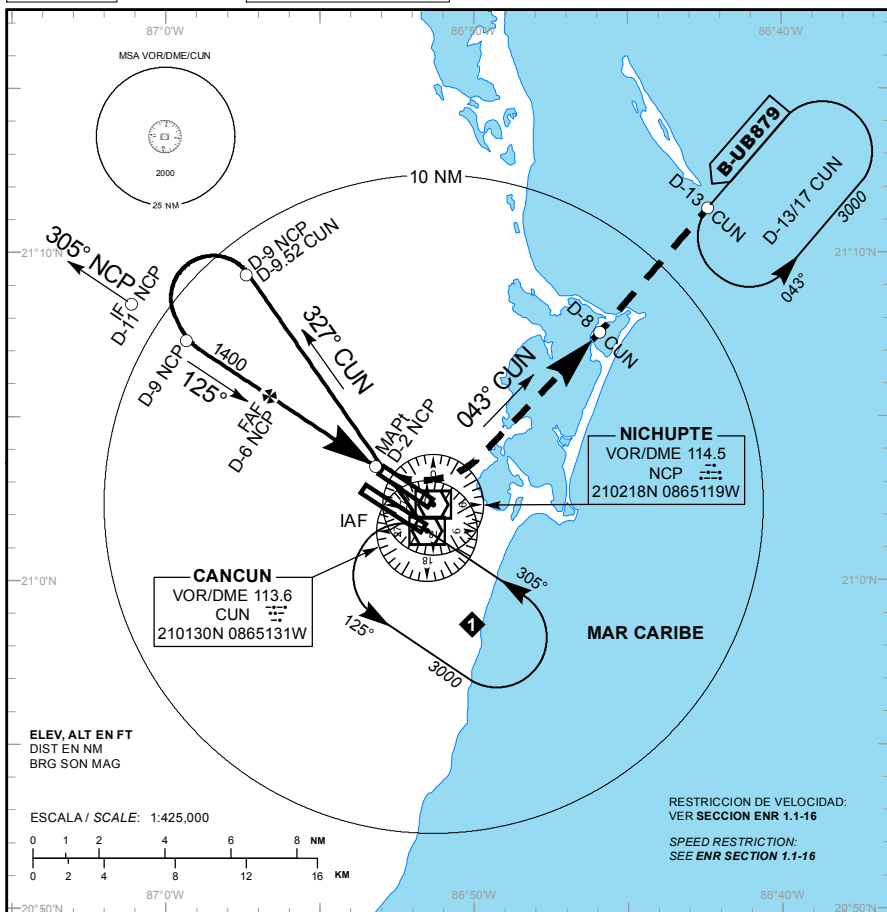
ELEV AD 22 FT

VAR 2° W

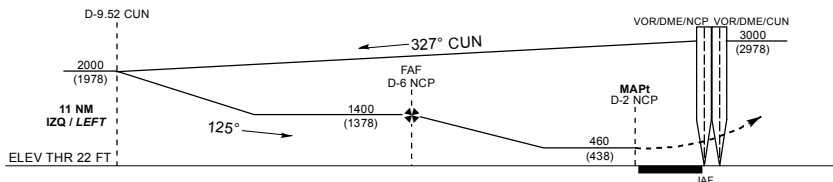
CANCUN

AEROPUERTO INTL / INTL AIRPORT

VOR/DME 1 RWY 12L



ALTURAS REFERIDAS AL THR RWY 12L ELEV 22 FT
HEIGHTS RELATED TO THR RWY 12L ELEV 22 FT



EFFECTUE VIRAJE A LA **IZQUIERDA**, CONTINUE EN **RADIAL 043° CUN**
(MANTENGA **2000 FT** HASTA **D-8 CUN**), PROSIGA EN ASCENSO
HASTA EL PATRON DE ESPERA **D-13/17 CUN**, HASTA ALCANZAR
3000 FT Y MANTENGA DE ACUERDO A INSTRUCCIONES DEL ATC.

TURN LEFT ON CUN VOR R-043° OUTBOUND (MAINTAIN 2000 FT UNTIL D-8 CUN) CONTINUE CLIMBING TO 3000 FT AND HOLD AT D-13/17 CUN THEN AS INSTRUCTED BY ATC.

GRADIENTE DE DESCENSO / RATE OF DESCENT								
FAF - THR	VEL GS (KTS)	80	100	120	140	160	180	200
4.24 NM	FT / NM	418	522	626	731	835	940	1044
5.2%	MIN : SEC	3:00	2:24	2:00	1:43	1:30	1:20	1:12

ALTITUD MINIMA SEGUN DISTANCIA DME/NCP /
MINIMUM ALTITUDE ACCORDING TO DISTANCE DME/NCP

NM	6	5	4	3
FT	1400 (1378)	1090 (1068)	770 (748)	460 (438)

CAMBIOS: SIMBOLOGIA

CAT	A	B	C	D
-	-			
DIRECTO/DIRECT MDA (MDH)	460 (438) - 1 (1600 M)		460 (438) - 1 1/4 (2000 M)	460 (438) - 1 1/2 (2400 M)
CIRCLING MDA (MDH)	480 (458) - 1 (1600 M)		580 (558) - 1 1/2 (2400 M)	580 (558) - 2 (3200 M)