

CARTA DE APROXIMACION  
POR INSTRUMENTOS  
INSTRUMENT APPROACH  
CHART (IAC)

TA: 18500 FT

ATIS	127.7
APP	124.7
ARR CUN	123.2
TWR CUN	118.6 ó 118.1
DEP SUR	123.6
DEP NORTE	124.2
SMC	121.7
AUX (TWR/APP)	120.4
APP (FNA)	122.7
ATIS C2W	127.8

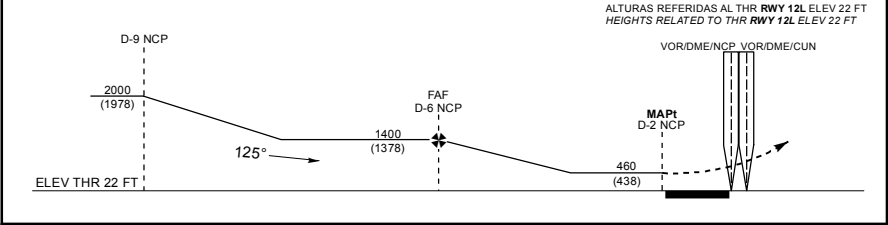
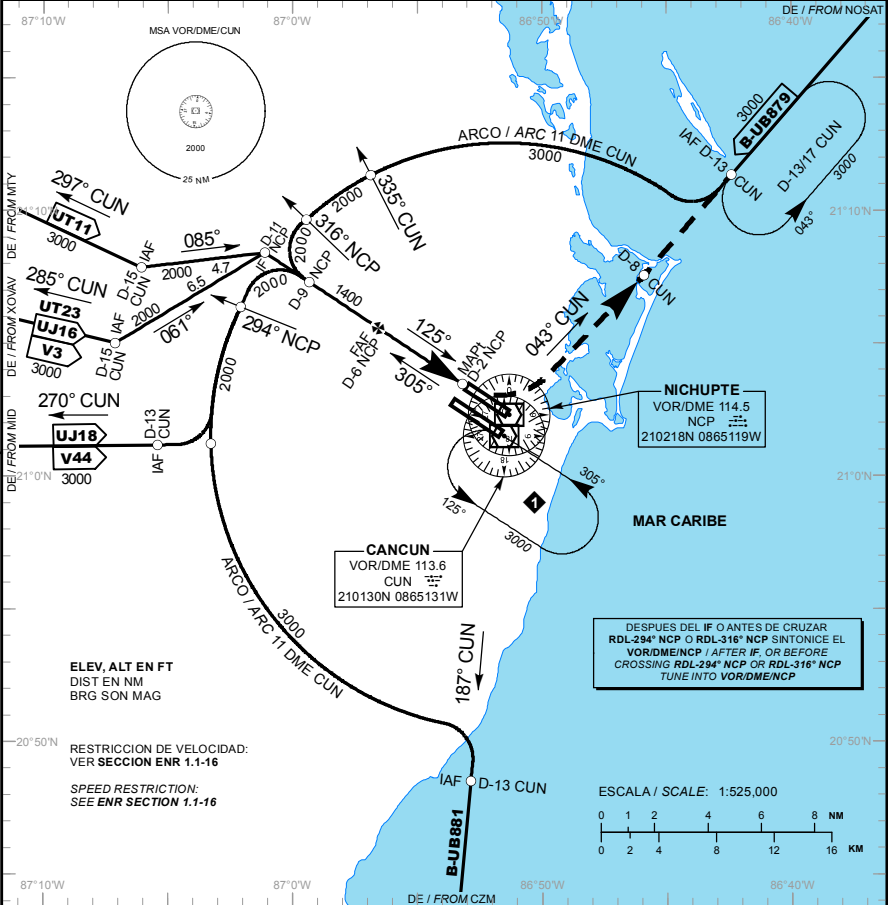
ELEV AD 22 FT

VAR 2° W

VOR/DME 2 RWY 12L

CANCUN

AEROPUERTO INTL / INTL AIRPORT



**APROXIMACION FRUSTRADA / MISSED APPROACH**

EFFECTUE VIRAJE A LA IZQUIERDA, CONTINUE EN RADIAL 043° CUN (MANTENGA 2000 FT HASTA D-8 CUN), PROSIGA EN ASCENSO HASTA EL PATRON DE ESPERA D-13/17 CUN, HASTA ALCANZAR 3000 FT Y MANTENGA DE ACUERDO A INSTRUCCIONES DEL ATC.

TURN LEFT ON CUN VOR R-043° OUTBOUND (MAINTAIN 2000 FT UNTIL D-8 CUN) CONTINUE CLIMBING TO 3000 FT AND HOLD AT D-13/17 CUN THEN AS INSTRUCTED BY ATC.

GRADIENTE DE DESCENSO / RATE OF DESCENT									
FAF - THR	VEL GS (KTS)	80	100	120	140	160	180	200	
4.24 NM	FT / NM	418	522	626	731	835	940	1044	
5.2%	MIN : SEC	3:00	2:24	2:00	1:43	1:30	1:20	1:12	

ALTITUD MINIMA SEGUN DISTANCIA DME/NCP / MINIMUM ALTITUDE ACCORDING TO DISTANCE DME/NCP

NM	6	5	4	3
FT	1400 (1378)	1090 (1068)	770 (748)	460 (438)

CAT	A	B	C	D
DIRECTO/DIRECT MDA (MDH)	460 (438) - 1 (1600 M)		460 (438) - 1 1/4 (2000 M)	460 (438) - 1 1/2 (2400 M)
CIRCLING MDA (MDH) CNL SECTOR 15° RWY 12L/03R	480 (458) - 1 (1600 M)		580 (558) - 1 1/2 (2400 M)	580 (558) - 2 (3200 M)

CAMBIO: SIMBOLOGIA: SENTIDO UT23