

CARTA DE APROXIMACION
POR INSTRUMENTOS
INSTRUMENT APPROACH
CHART (IAC)

TA: 18500 FT

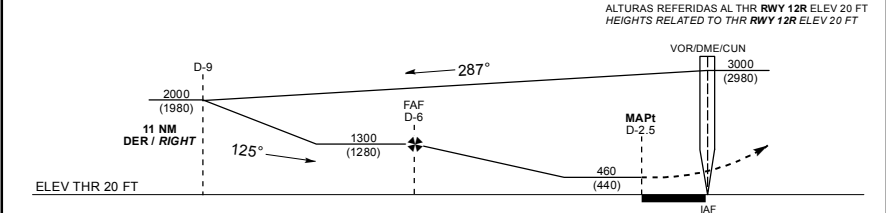
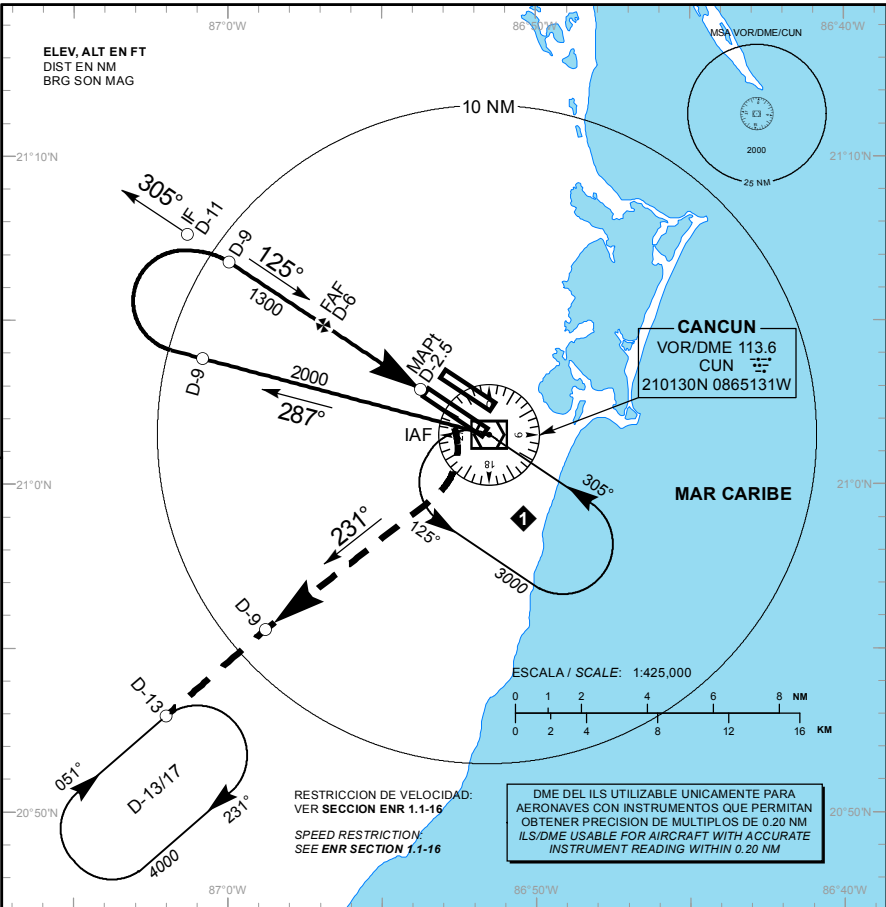
ATIS	127.7
APP	124.7
ARR CUN	123.2
TWR CUN	118.6 ó 118.1
DEP SUR	123.5
DEP NORTE	124.2
SMC	121.7
AUX (TWR/APP)	120.4
APP (FNA)	122.7
ATIS C2W	127.8

ELEV AD 22 FT
VAR 2° W

CANCUN

AEROPUERTO INTL / INTL AIRPORT

VOR/DME 1 RWY 12R



APROXIMACION FRUSTRADA / MISSED APPROACH

EFFECTUE VIRAJE A LA DERECHA, CONTINUE EN RADIAL 231° CUN (MANTENGA 2000 FT HASTA D-9 CUN), PROSIGA EN ASCENSO HASTA EL PATRON DE ESPERA D-13/17 CUN, HASTA ALCANZAR 4000 FT Y MANTENGA DE ACUERDO A INSTRUCCIONES DEL ATC.

TURN RIGHT ON CUN VOR R-231° OUTBOUND (MAINTAIN 2000 FT UNTIL D-9 CUN) CONTINUE CLIMBING TO 4000 FT AND HOLD AT D-13/17 CUN THEN AS INSTRUCTED BY ATC.

GRADIENTE DE DESCENSO / RATE OF DESCENT		FAP - THR							
		VEL GS (KTS)	80	100	120	140	160	180	200
3.82 NM	5.3% (3.0°)	FT / NM	429	537	644	751	859	966	1073
		MIN : SEC	2:37	2:06	1:45	1:30	1:19	1:10	1:03

ALTITUD MINIMA SEGUN DISTANCIA DME/CUN / MINIMUM ALTITUDE ACCORDING TO DISTANCE DME/CUN

NM	6	5	4
FT	1300 (1280)	980 (960)	660 (640)

CAT	A	B	C	D
-	-	-	-	-
DIRECTO/DIRECT MDA (MDH)	460 (440) - 1 (1600 M)	-	460 (440) - 1 1/4 (2000 M)	460 (440) - 1 1/2 (2400 M)
CIRCLING MDA (MDH) CNL SECTOR "N" RWY 12R/30L	480 (458) - 1 (1600 M)	-	580 (558) - 1 1/2 (2400 M)	580 (558) - 2 (3200 M)

CAMBIO: SIMBOLOGIA