

TA: 18500 FT

ATIS	127.7
APP	124.7
ARR CUN	123.2
TWR CUN	118.6 6 118.1
DEP SUR	123.5
DEP NORTE	124.2
SMC	121.7
AUX (TWR/APP)	120.4
APP (FNA)	122.7
ATIS CZM	127.8

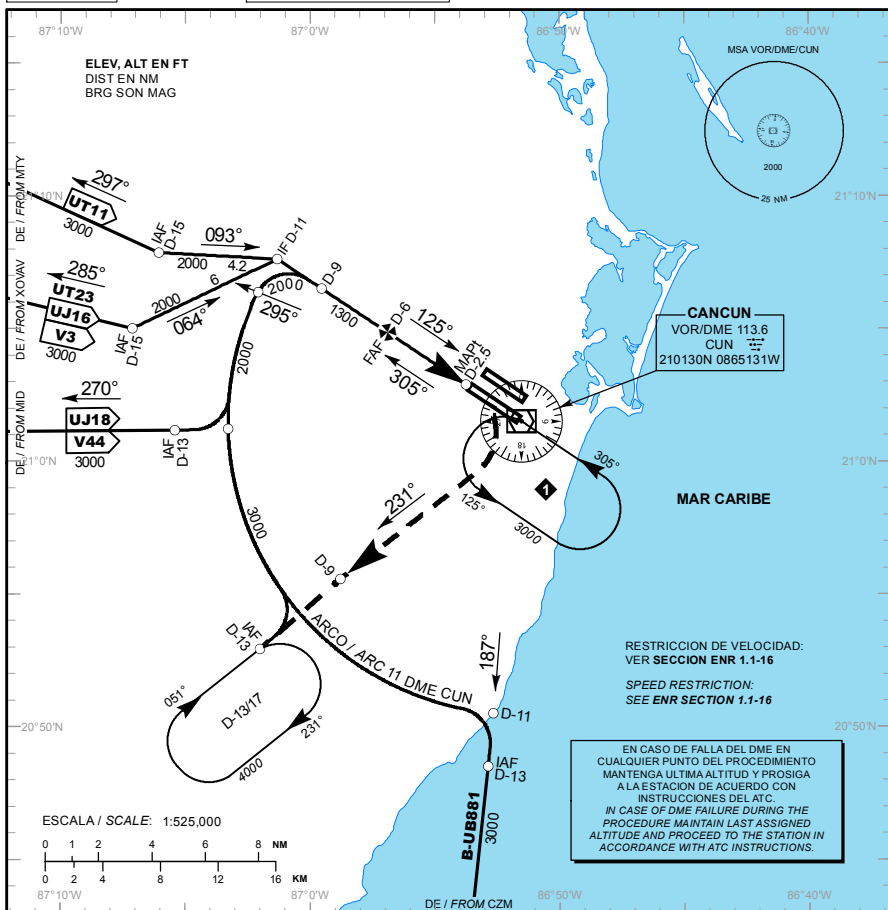
ELEV AD 22 FT

VAR 2° W

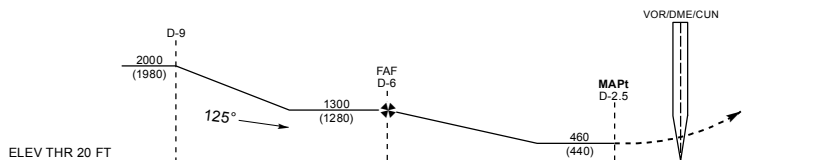
CANCUN

AEROPUERTO INTL / INTL AIRPORT

VOR/DME 2 RWY 12R



ALTURAS REFERIDAS AL THR RWY 12R ELEV 20 FT
HEIGHTS RELATED TO THR RWY 12R ELEV 20 FT



EFECTUE VIRAJE A LA **DERECHA**, CONTINUE EN **RADIAL 231° CUN**
(MANTENGA **2000 FT** HASTA **D-9 CUN**), PROSIGA EN ASCENSO
HASTA EL PATRON DE ESPERA **D-13/17 CUN**, HASTA ALCANZAR
4000 FT Y MANTENGA DE ACUERDO A INSTRUCCIONES DEL ATC.

TURN RIGHT ON CUN VOR R-231° OUTBOUND (MAINTAIN 2000 FT UNTIL D-9 CUN) CONTINUE CLIMBING TO 4000 FT AND HOLD AT D-13/17 CUN THEN AS INSTRUCTED BY ATC.

FAP - THR	VEL GS (KTS)	80	100	120	140	160	180	200
3.82 NM	FT / NM	429	537	644	751	859	966	1073
5.3% (3.0°)	MIN : SEC	2:37	2:06	1:45	1:30	1:19	1:10	1:03

ALTITUD MINIMA SEGUN DISTANCIA DME/CUN /
MINIMUM ALTITUDE ACCORDING TO DISTANCE DME/CUN

NM	6	5	4
FT	1300 (1280)	980 (960)	660 (640)

CAT	A	B	C	D
-	-			
DIRECTO/DIRECT MDA (MDH)	460 (440) - 1 (1600 M)		460 (440) - 1 1/4 (2000 M)	460 (440) - 1 1/2 (2400 M)
CIRCLING MDA (MDH)	480 (458) - 1 (1600 M)		580 (558) - 1 1/2 (2400 M)	580 (558) - 2 (3200 M)

08-SEP-2022 AMDT AIRAC 09/22

SCT - AFAC - SENEAM

MMUN-IAC-8

CAMBIOS: SIMBOLOGIA: SENTIDO UT23