

CARTA DE APROXIMACION  
POR INSTRUMENTOS  
INSTRUMENT APPROACH  
CHART (IAC)

TA: 18500 FT

ATIS	127.7
APP	124.7
ARR CUN	123.2
TWR CUN	118.6 ó 118.1
DEP SUR	123.5
DEP NORTE	124.2
SMC	121.7
AUX (TWR/APP)	120.4
APP (FNA)	122.7
ATIS CZM	127.8

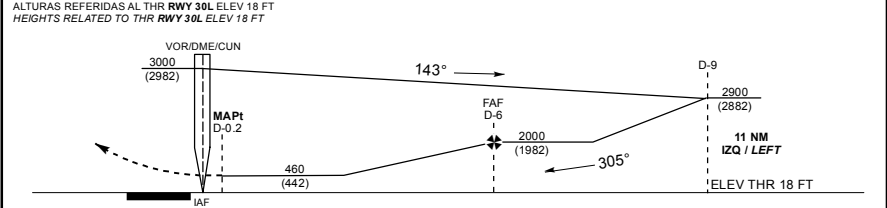
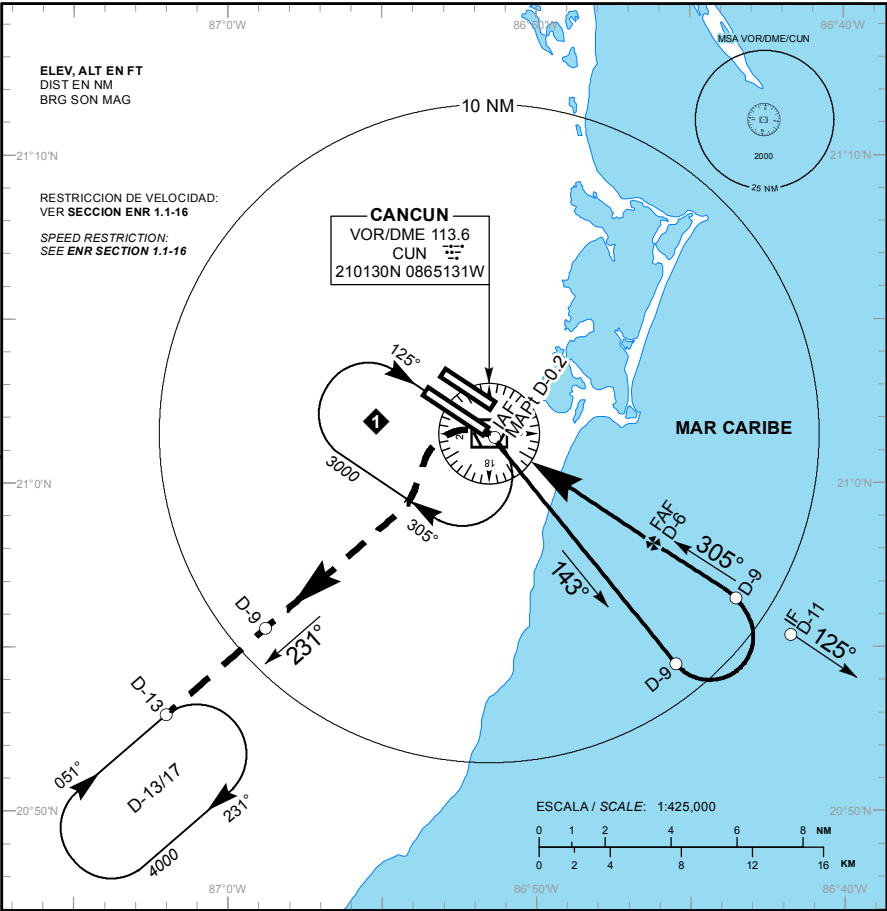
ELEV AD 22 FT

VAR 2° W

CANCUN

AEROPUERTO INTL / INTL AIRPORT

VOR/DME 1 RWY 30L



**APROXIMACION FRUSTRADA / MISSED APPROACH**

EFFECTUE VIRAJE A LA IZQUIERDA, CONTINUE EN RADIAL 231° CUN (MANTENGA 2000 FT HASTA D-9 CUN), PROSIGA EN ASCENSO HASTA EL PATRON DE ESPERA D-13/17 CUN, HASTA ALCANZAR 4000 FT Y MANTENGA DE ACUERDO A INSTRUCCIONES DEL ATC.

TURN LEFT ON CUN VOR R-231° OUTBOUND (MAINTAIN 2000 FT UNTIL D-9 CUN) CONTINUE CLIMBING TO 4000 FT AND HOLD AT D-13/17 CUN THEN AS INSTRUCTED BY ATC.

GRADIENTE DE DESCENSO / RATE OF DESCENT		VEL GS (KTS)							
		80	100	120	140	160	180	200	
FAF - THR	6.28 NM	FT / NM	410	513	615	718	820	923	1025
5.1% (2.9°)	MIN : SEC	4:21	3:29	2:54	2:29	2:10	1:56	1:44	

ALTITUD MINIMA SEGUN DISTANCIA DME/CUN / MINIMUM ALTITUDE ACCORDING TO DISTANCE DME/CUN

NM	6	5	4	3	2
FT	2000 (1982)	1690 (1672)	1380 (1362)	1080 (1062)	770 (752)

CAT	A	B	C	D
-	-	-	-	-
DIRECTO/DIRECT MDA (MDH)	460 (442) - 1 (1600 M)	-	460 (442) - 1 1/4 (2000 M)	460 (442) - 1 1/2 (2400 M)
CIRCLING MDA (MDH) CNL SECTOR "N" RWY 12R/30L	480 (458) - 1 (1600 M)	-	580 (558) - 1 1/2 (2400 M)	580 (558) - 2 (3200 M)

CAMBIO: SIMBOLOGIA