

CARTA DE APROXIMACION
POR INSTRUMENTOS
INSTRUMENT APPROACH
CHART (IAC)

TWR 118.4
APP 119.1
ATIS 127.8

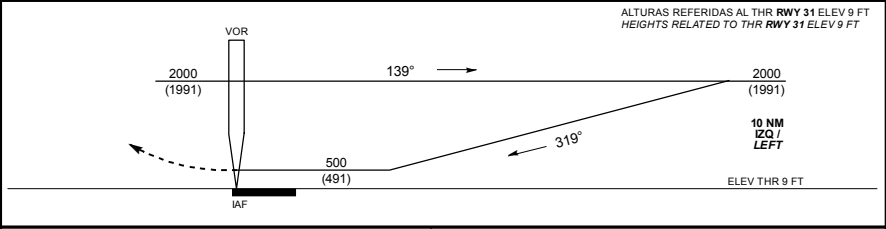
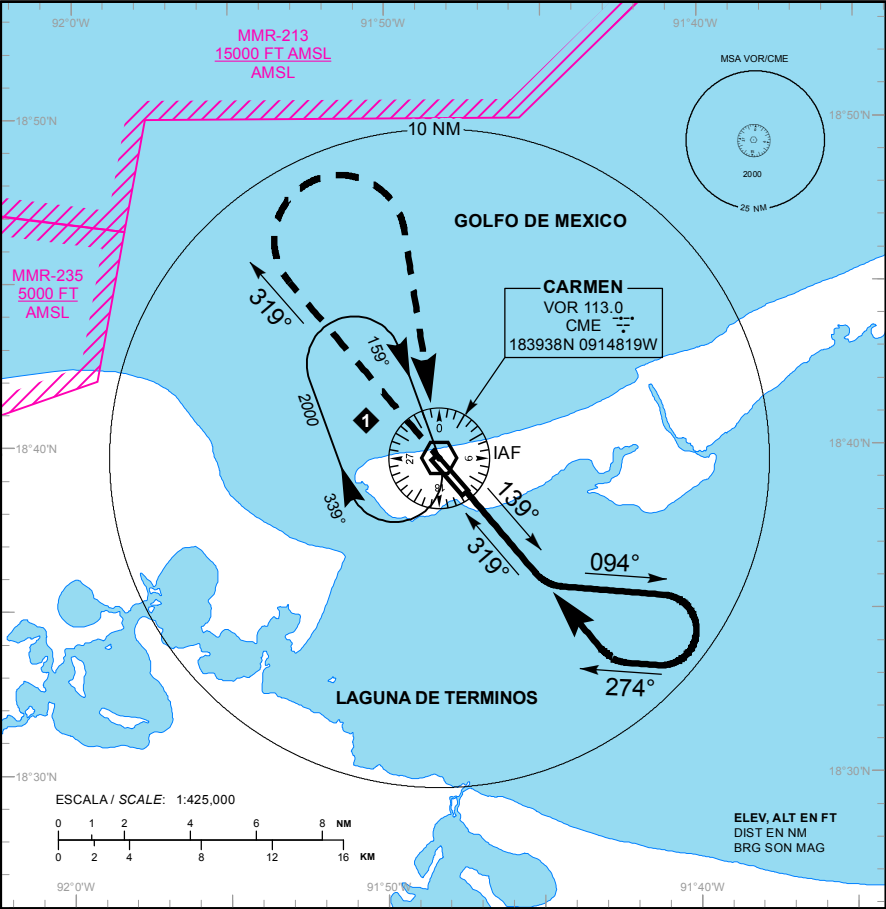
ELEV AD 10 FT
VAR 1° E

CIUDAD DEL CARMEN

AEROPUERTO INTL / INTL AIRPORT

TA: 18500 FT

VOR RWY 31



C		D	
DIRECTO/DIRECT MDA (MDH)		500 (491) - 1 1/2 (2400 M)	
CIRCULANDO CIRCLING MDA (MDH)		560 (550) - 2 (3200 M)	